



Brussels, 30.11.2016  
SWD(2016) 420 final

PART 10/13

**COMMISSION STAFF WORKING DOCUMENT**

*Accompanying the document*

**REPORT FROM THE COMMISSION TO THE EUROPEAN PARLIAMENT, THE  
COUNCIL, THE EUROPEAN ECONOMIC AND SOCIAL COMMITTEE AND THE  
COMMITTEE OF THE REGIONS**

**Energy prices and costs in Europe**

{COM(2016) 769 final}

<b>ANNEX 3 - COUNTRY FACT SHEETS</b>	<b>343</b>
<b>AUSTRIA</b>	<b>344</b>
<b>BELGIUM</b>	<b>350</b>
<b>BULGARIA</b>	<b>357</b>
<b>CROATIA</b>	<b>363</b>
<b>CYPRUS</b>	<b>369</b>
<b>CZECH REPUBLIC</b>	<b>373</b>
<b>DENMARK</b>	<b>379</b>
<b>ESTONIA</b>	<b>386</b>

## **Annex 3 - Country fact sheets**

For all reporting countries:

Electricity "household price" refers to Eurostat consumption band DC covering annual consumption of 2500 to 5000 kWh.

Electricity "industrial price" refers to Eurostat consumption band ID covering annual consumption of 2000 to 20000 MWh.

Natural gas "household price" refers to Eurostat consumption band D2 covering annual consumption of 20 GJ to 200 GJ.

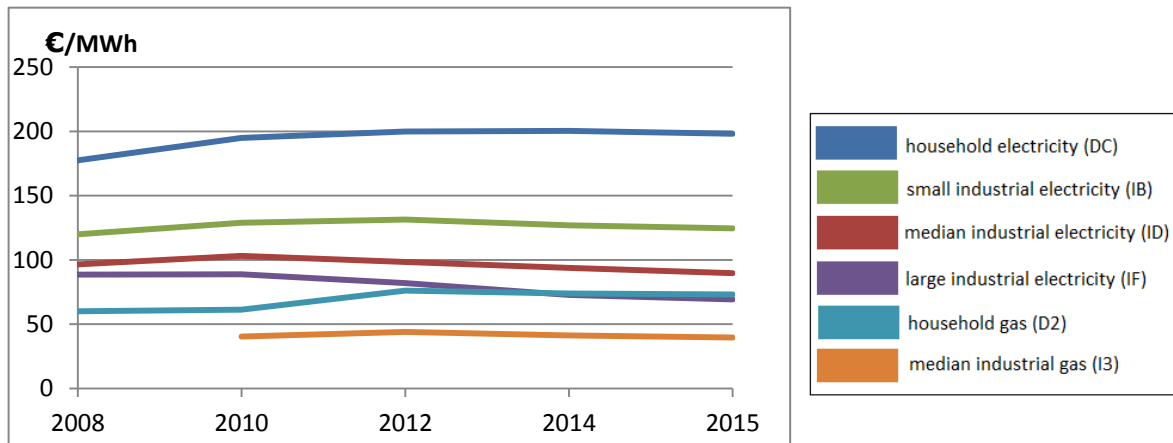
Natural gas "industrial price" refers to Eurostat consumption band I3 covering annual consumption of 10 000 GJ to 100 000 GJ.

"Energy products in household expenditure" refers to household expenditure on energy products excluding transport fuels

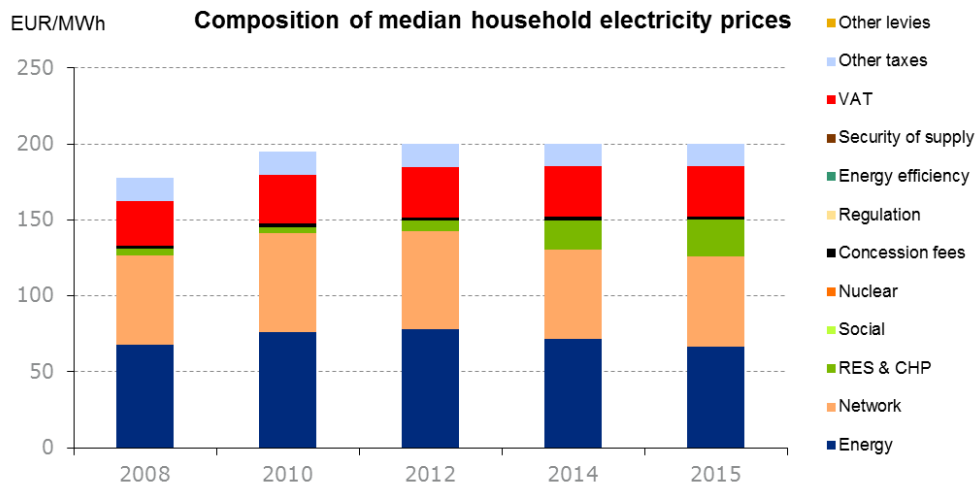
# Austria

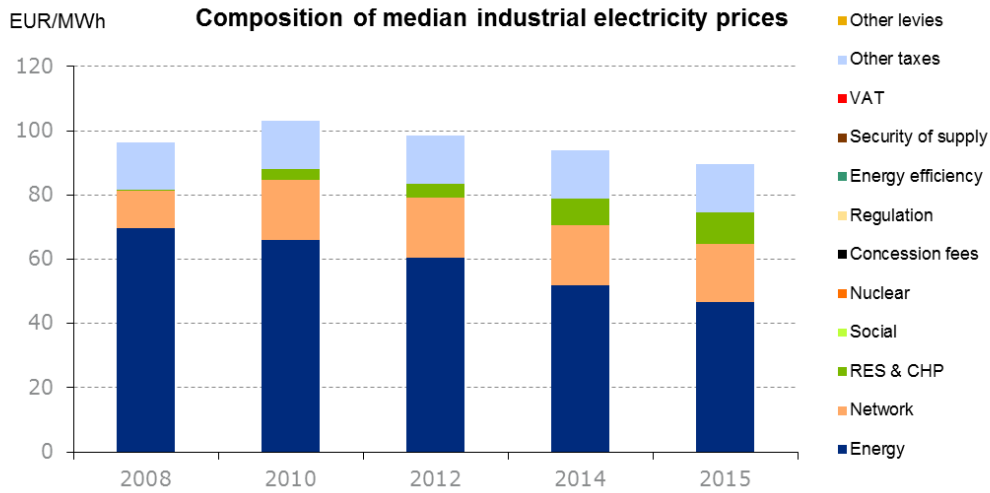


## Evolution of electricity and natural gas prices



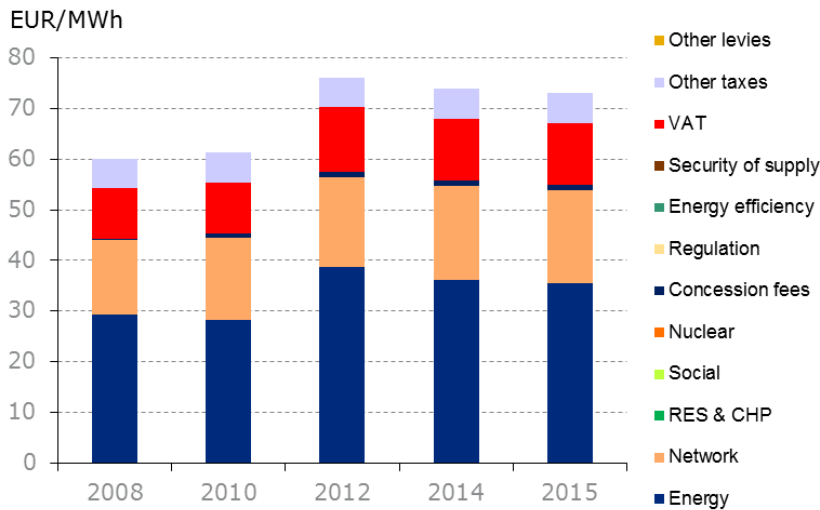
## Composition of electricity prices



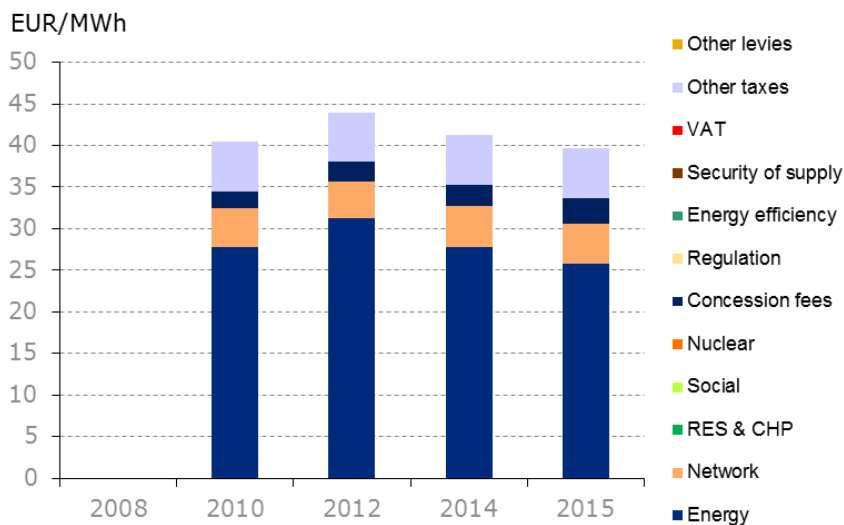


## Composition of gas prices

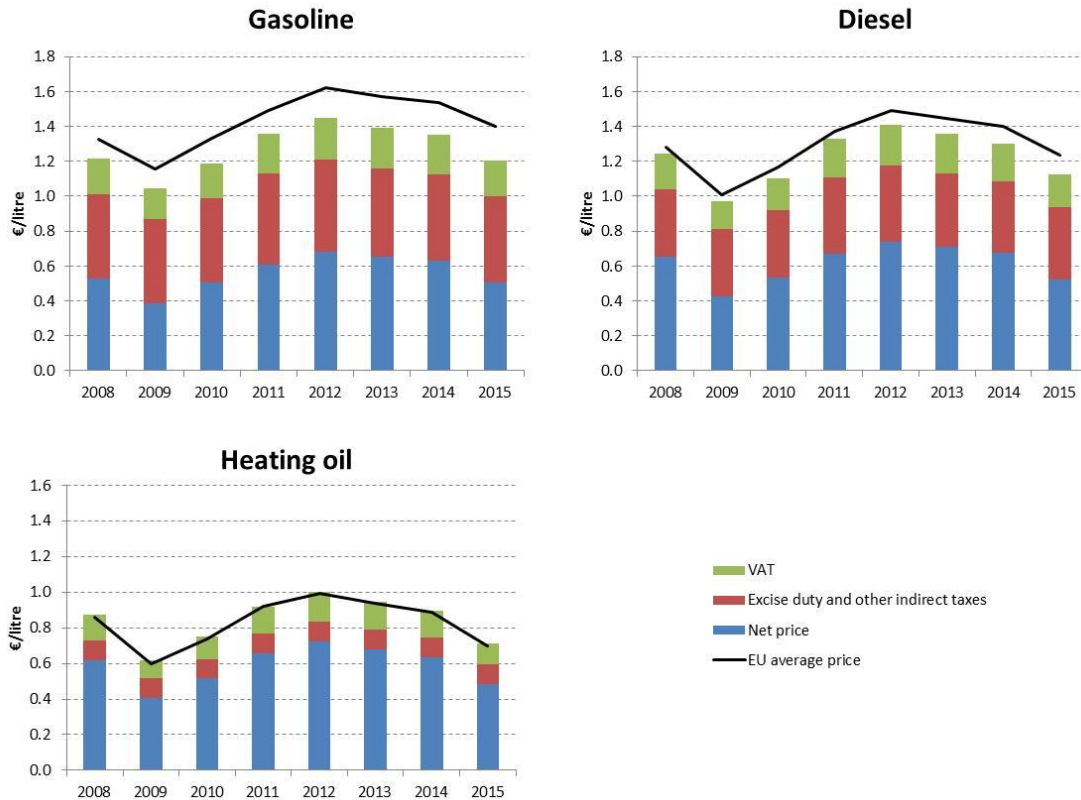
### Composition of median household gas prices



### Composition of median industrial gas prices

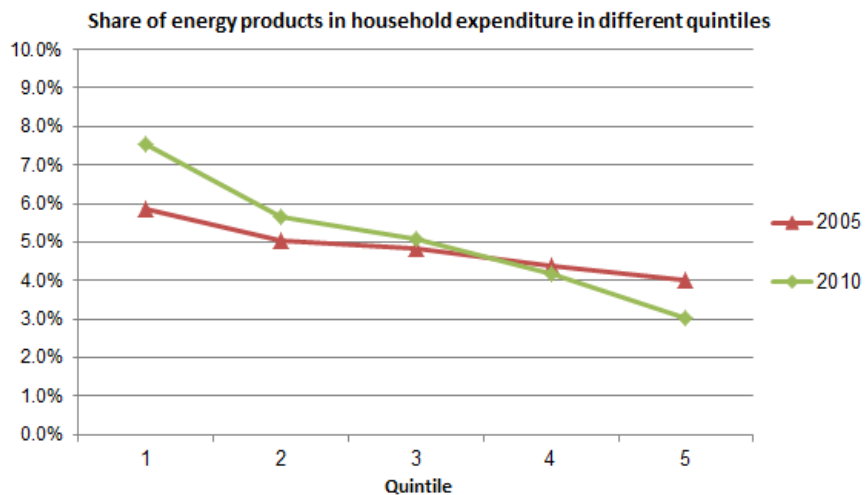


## Oil products prices



## Energy in Households budgets

### Austria

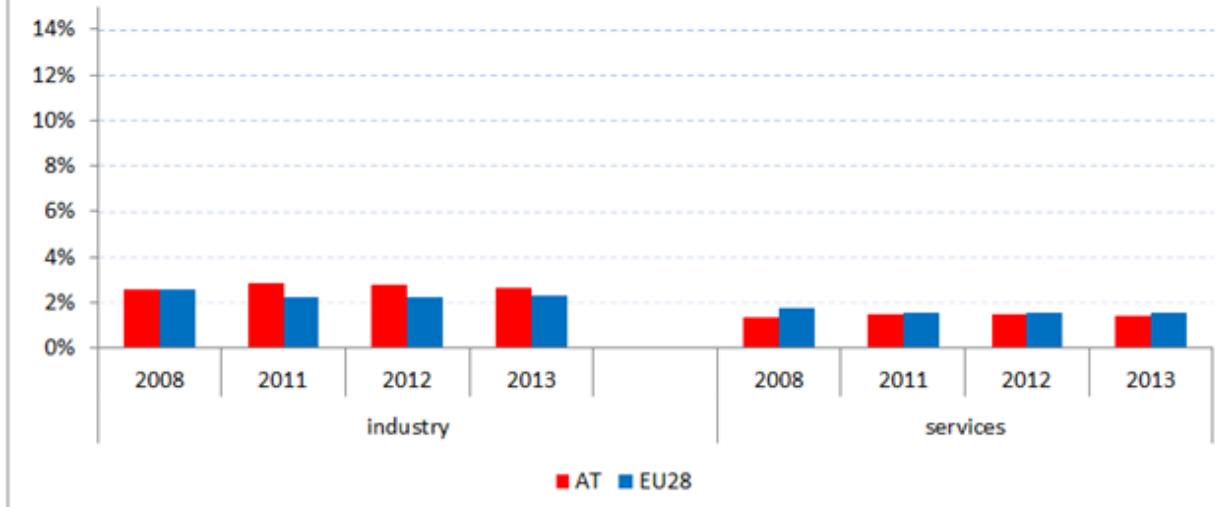


In 2005 in Austria (red line) the poorest households (Quintile 1) had to spend 5.9% of their total expenditures on energy products. In 2010 (green line) the poorest households spent 7.5% of their total expenditure on energy. In the case of middle income households (Quintile 3) the share of energy remained practically unchanged.

## Energy costs shares in total production costs

### Share of energy costs in total production value in industry and services: AT vs. EU28

Source: ESTAT, SBS and NA, own calculations



**Notes**

Data for Malta, Poland, Slovenia (prior to 2012) and Ireland (after 2012) is not available

Data for 2009 and 2010 is incomplete and not reported

Industry defined as NACE Rev.2 Section C (Manufacturing)

Services defined as NACE Rev. 2 Sections G - U

## Electricity and gas prices – Breakdown by price element

<b>Band DC</b>	<b>EUR/kWh 2015</b>
Energy	0.066800
<b>Total energy component</b>	<b>0.066800</b>
Network	0.059300
<b>Total network component</b>	<b>0.059300</b>
Local tax	0.002200
Renewables, CHP	0.024100
VAT	0.033000
Excise Tax	0.015000
<b>Total taxes &amp; levies component</b>	<b>0.074300</b>
<b>Total price</b>	<b>0.200400</b>

<b>Band ID</b>	<b>EUR/kWh 2015</b>
Energy	0.046700
<b>Total energy component</b>	<b>0.046700</b>
Network	0.018000
<b>Total network component</b>	<b>0.018000</b>
VAT	0.000000
Excise Tax	0.015000
RES Support	0.010000
<b>Total taxes &amp; levies component</b>	<b>0.025000</b>
<b>Total price</b>	<b>0.089700</b>

<b>Band D2</b>	<b>EUR/kWh 2015</b>
Energy	0.035500
<b>Total energy component</b>	<b>0.035500</b>
Network	0.018400
<b>Total network component</b>	<b>0.018400</b>
Natural Gas tax	0.005900



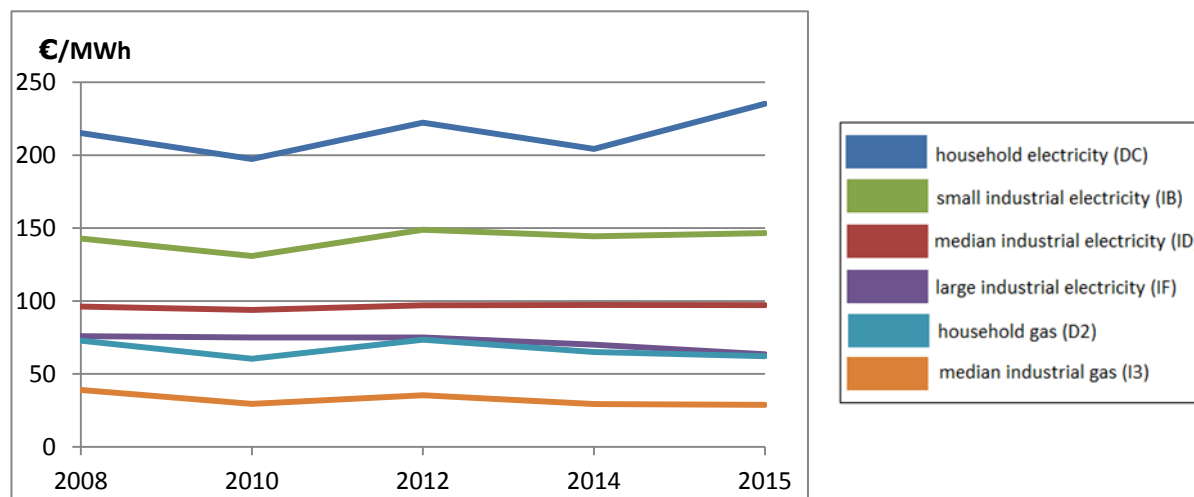
Municipality charges	0.001100
VAT	0.012200
<b>Total taxes &amp; levies component</b>	<b>0.019200</b>
<b>Total price</b>	<b>0.073100</b>

<b>Band I3</b>	<b>EUR/kWh</b> <b>2015</b>
Energy	0.025800
<b>Total energy component</b>	<b>0.025800</b>
Network	0.004800
<b>Total network component</b>	<b>0.004800</b>
Natural Gas tax	0.005900
Municipality charges	0.003100
VAT	0.000000
<b>Total taxes &amp; levies component</b>	<b>0.009000</b>
<b>Total price</b>	<b>0.039600</b>

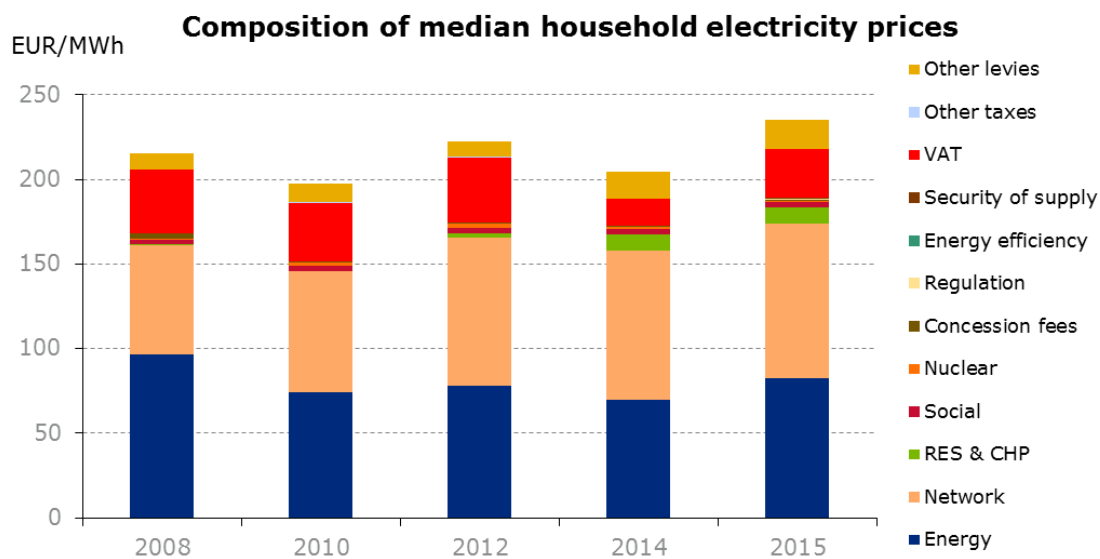
# Belgium

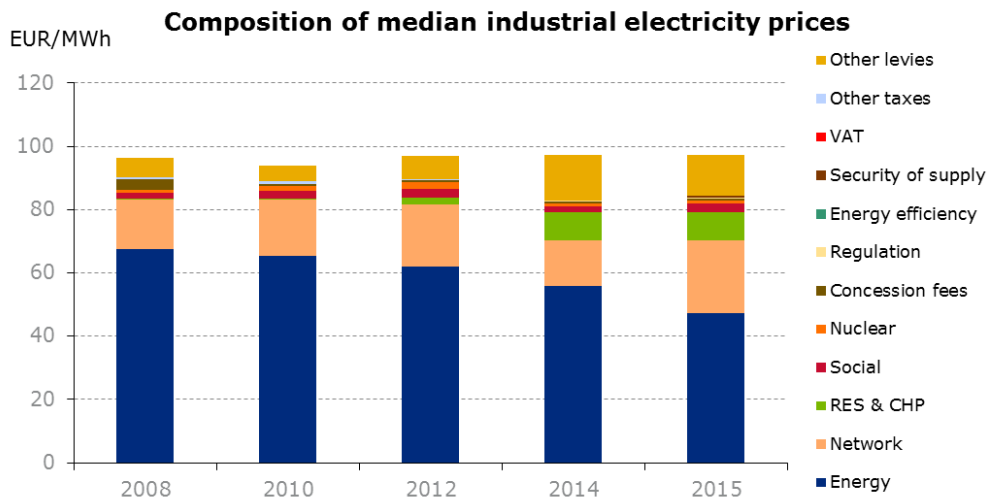


## Evolution of electricity and natural gas prices



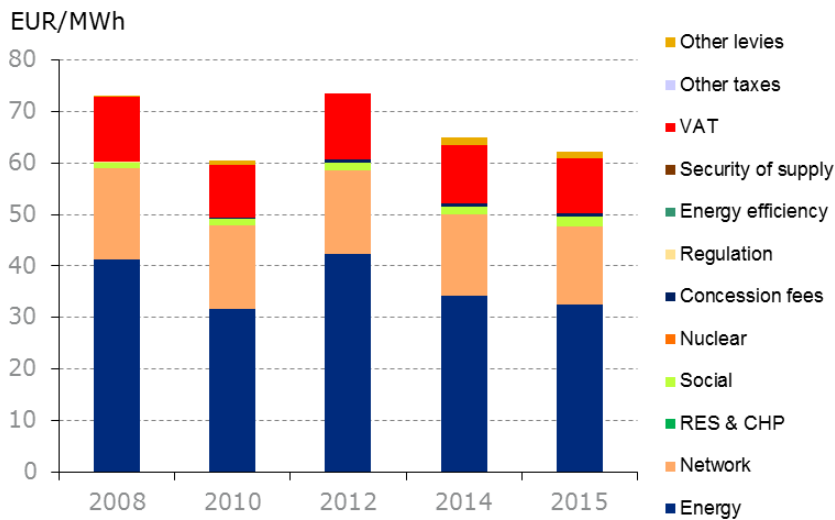
## Composition of electricity prices



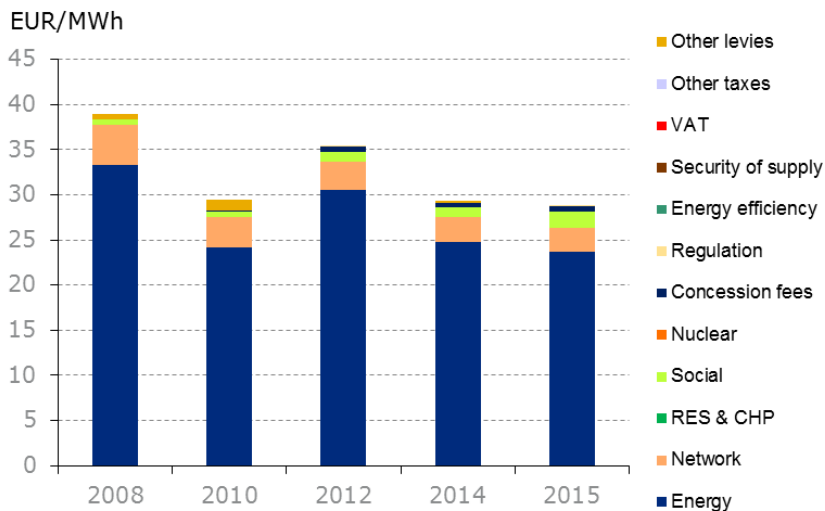


## Composition of gas prices

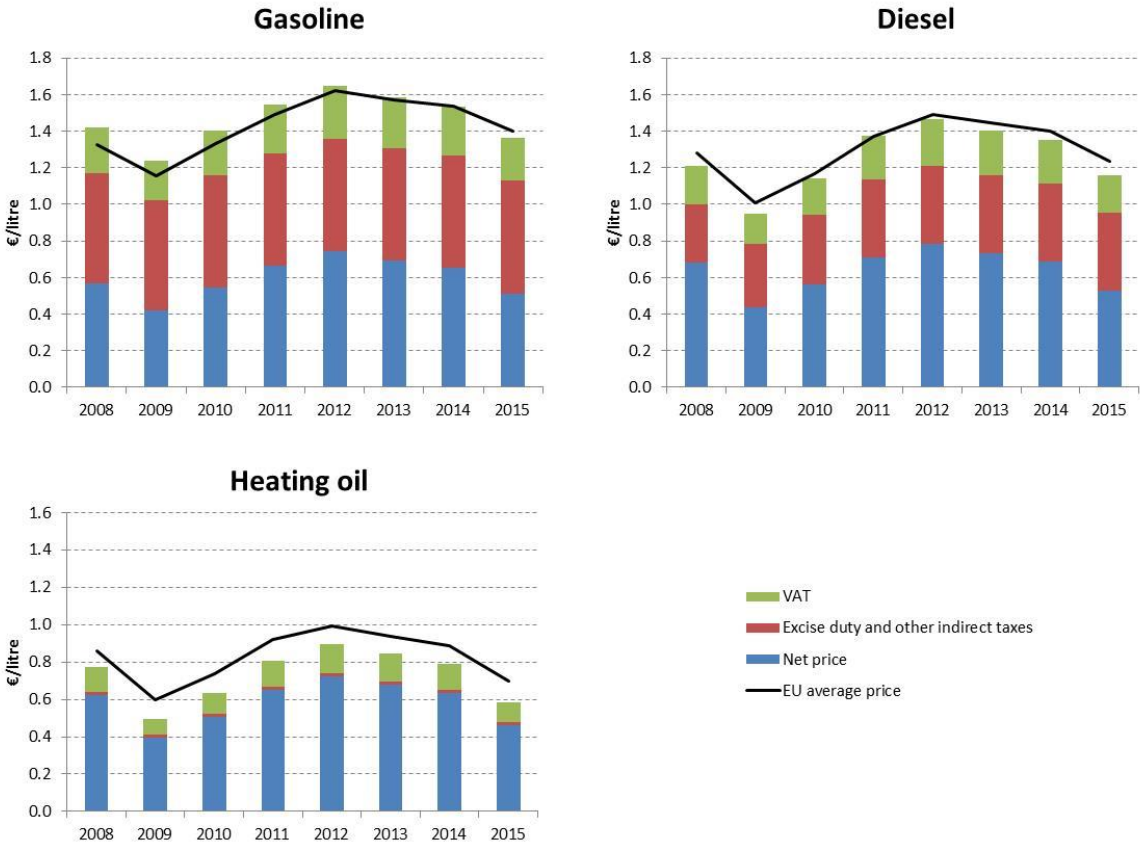
### Composition of median household gas prices



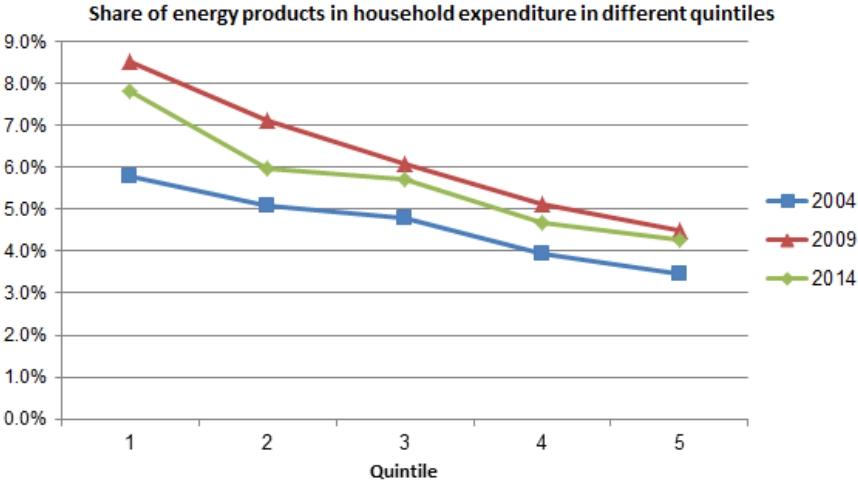
### Composition of median industrial gas prices



### Oil products prices



### Energy in Households budgets

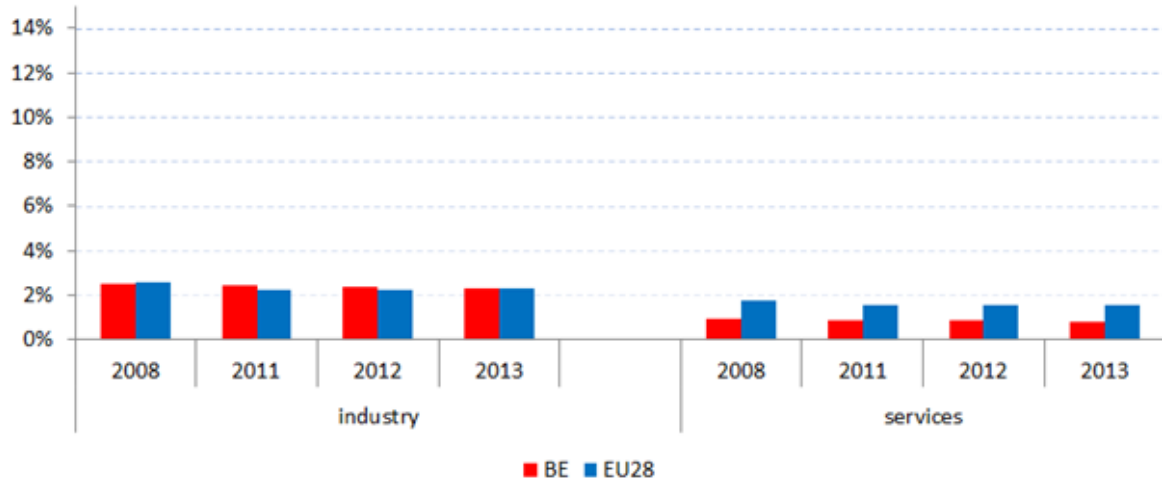


Between 2004 (blue line) and 2009 (red line) the share of energy in total household expenditure went up from 5.8% to 8.5% in Belgium in the case of the poorest households (Quintile 1), while it increased from 4.8% to 6.1% in the case of middle income households (Quintile 3). In 2014 (green line) the share of energy slightly decreased in all income quintiles.

### Energy costs shares in total production costs

### Share of energy costs in total production value in industry and services: BE vs. EU28

Source: ESTAT, SBS and NA, own calculations



**Notes**

Data for Malta, Poland, Slovenia (prior to 2012) and Ireland (after 2012) is not available

Data for 2009 and 2010 is incomplete and not reported

Industry defined as NACE Rev.2 Section C (Manufacturing)

Services defined as NACE Rev. 2 Sections G - U

## Electricity and gas prices – Breakdown by price element

<b>Band DC</b>	<b>EUR/kWh 2015</b>
Energy	0.171185
<b>Total energy component</b>	<b>0.171185</b>
Transmission Distribution	
<b>Total network component</b>	<b>0.000000</b>
VAT	0.012000
Capacity payments	0.000560
Others	0.014104
Connection of offshore wind	0.000063
Nuclear decommissioning	0.000978
Social measures	0.003316
Connection fee	0.000256
Promotion rational use of energy	0.000035
Contribution for federal regulator (CREG)	0.000151
Promotion of renewables and CHP	0.009600
Levy for occupying public domain	0.000351
Kyoto	
<b>Total taxes &amp; levies component</b>	<b>0.041415</b>
<b>Total price</b>	<b>0.212600</b>

<b>Band ID</b>	<b>EUR/kWh 2015</b>
Energy	0.047140
<b>Total energy component</b>	<b>0.047140</b>
Transmission Distribution	0.004461 0.018652
<b>Total network component</b>	<b>0.023112</b>
VAT	0.000000
Capacity payments	0.000560
Others	0.012919
Connection of offshore wind	0.000063
Nuclear decommissioning	0.000978
Social measures	0.002838
Connection fee	0.000217
Promotion rational use of energy	0.000040

Contribution for federal regulator (CREG)	0.000151
Promotion of renewables and CHP	0.008868
Levy for occupying public domain Kyoto	0.000315
<b>Total taxes &amp; levies component</b>	<b>0.026948</b>
<b>Total price</b>	<b>0.097200</b>

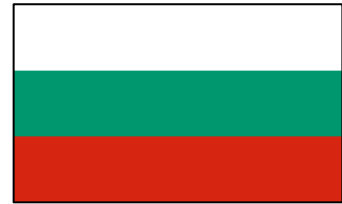
<b>Band D2</b>	<b>EUR/kWh 2015</b>
Energy	0.032569
<b>Total energy component</b>	<b>0.032569</b>
Transmission	0.001517
Distribution	0.013650
<b>Total network component</b>	<b>0.015167</b>
Others	0.001207
Contribution for federal regulator (CREG)	0.000036
Levy for occupying public domain	0.000606
Connection fee	0.000018
VAT	0.010700
Social measures	0.001752
Promotion rational use of energy	0.000039
<b>Total taxes &amp; levies component</b>	<b>0.014357</b>
	<b>0.000000</b>
<b>Total price</b>	<b>0.062093</b>

<b>Band I3</b>	<b>EUR/kWh 2015</b>
Energy	0.023696
<b>Total energy component</b>	<b>0.023696</b>
Transmission	0.000805
Distribution	0.001878
<b>Total network component</b>	<b>0.002683</b>
Others	0.000000
Contribution for federal regulator (CREG)	0.000036
Levy for occupying public domain	0.000530
Connection fee	0.000020
VAT	0.000000
Social measures	0.001752

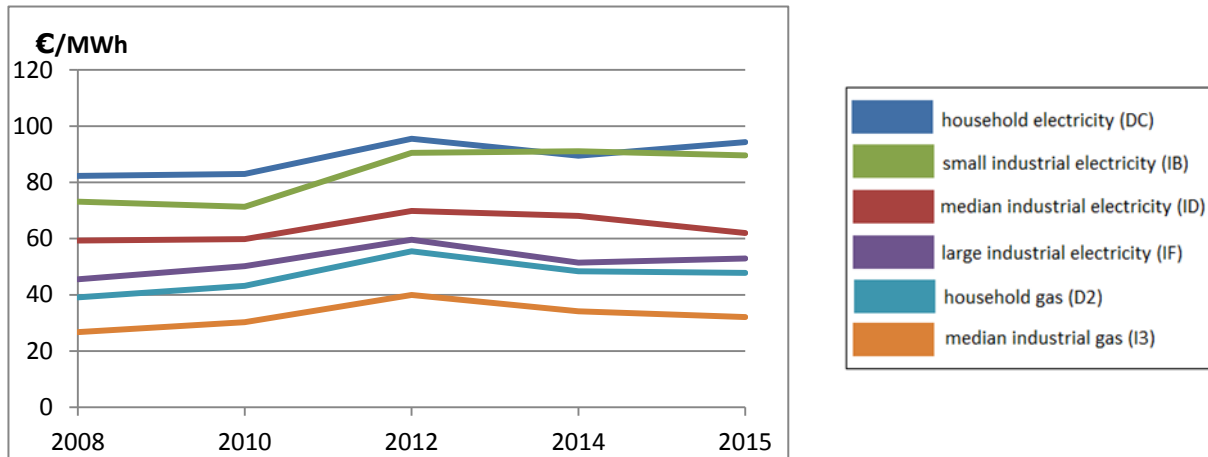
Promotion rational use of energy	
<b>Total taxes &amp; levies component</b>	<b>0.002337</b>
<b>Total price</b>	<b>0.02871723</b>



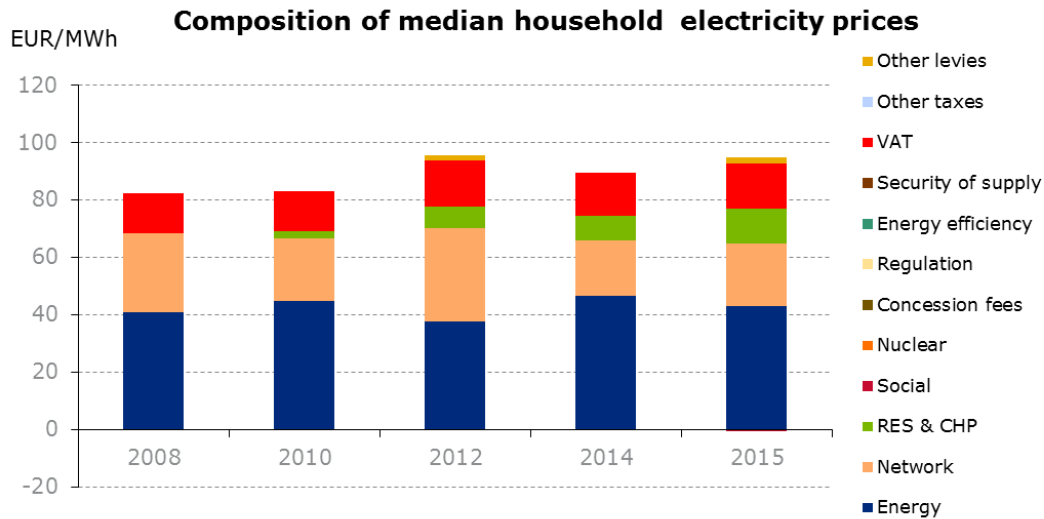
# Bulgaria

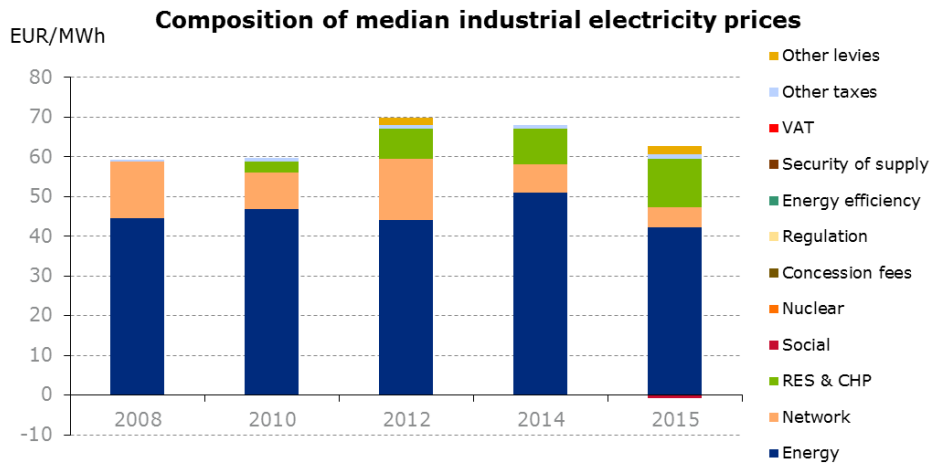


## Evolution of electricity and natural gas prices



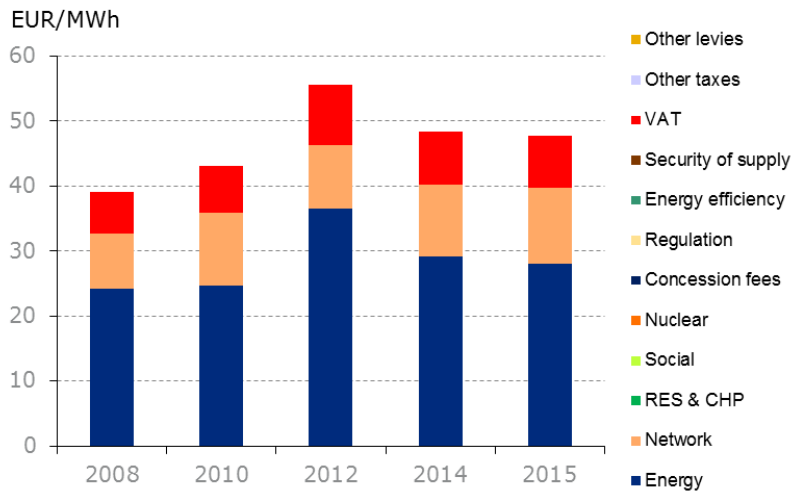
## Composition of electricity prices



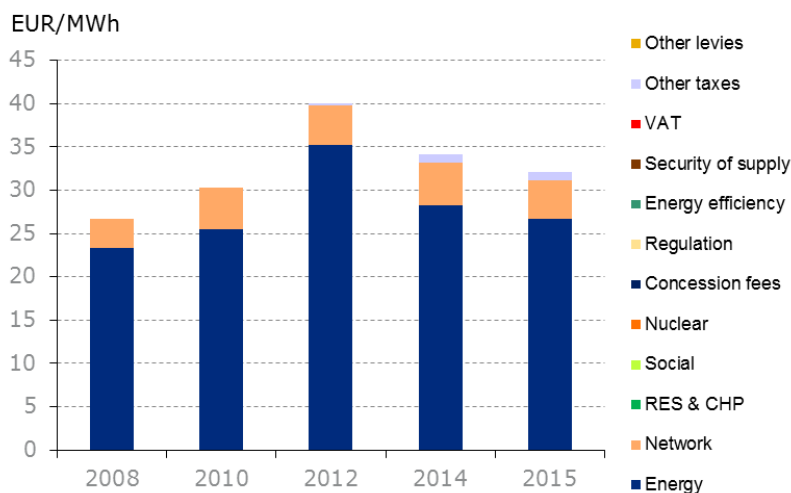


## Composition of gas prices

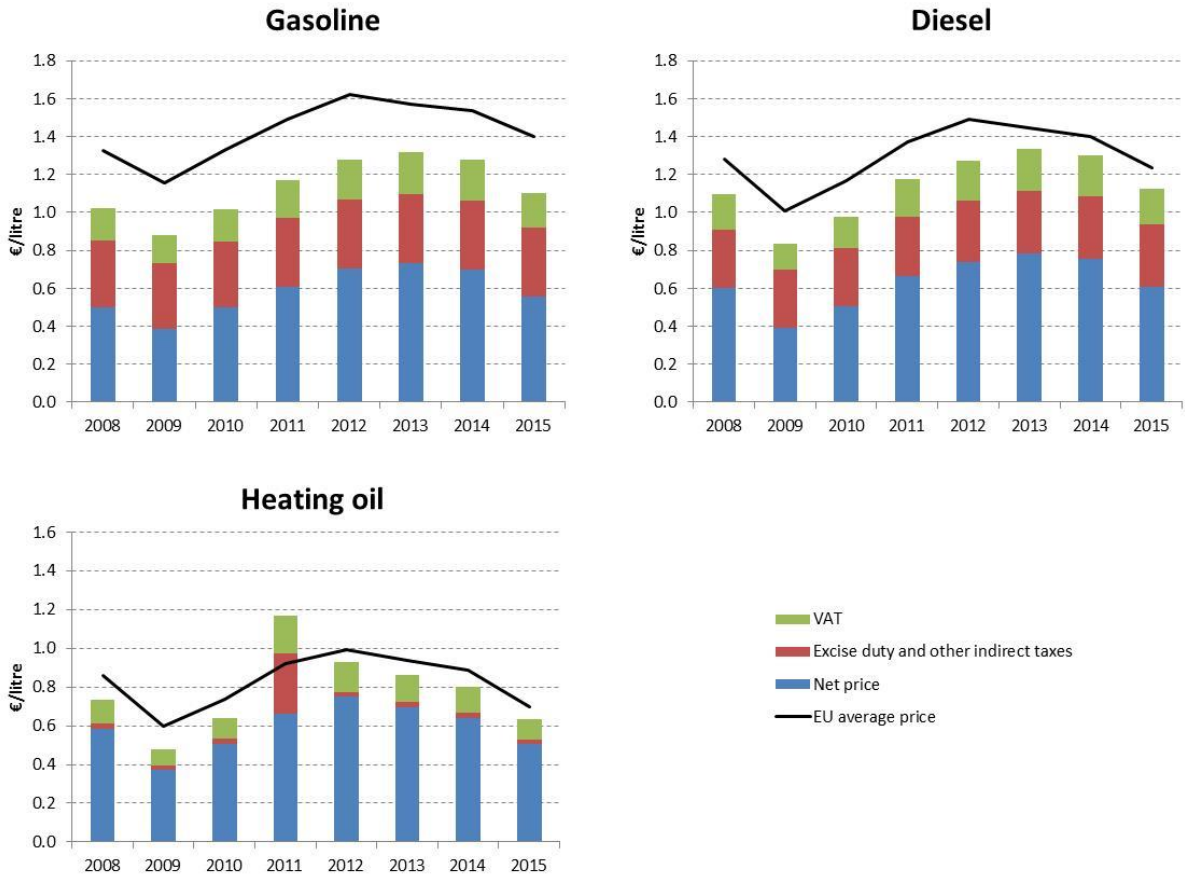
### Composition of median household gas prices



### Composition of median industrial gas prices

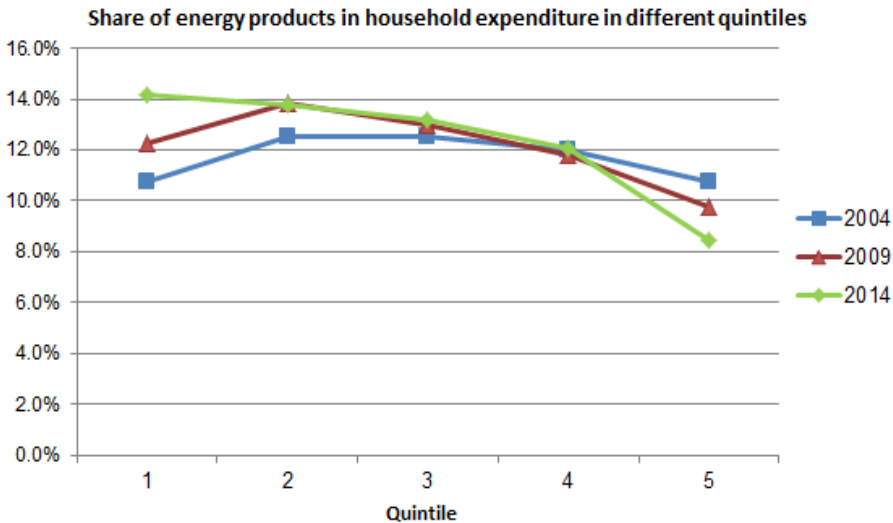


### Oil products prices



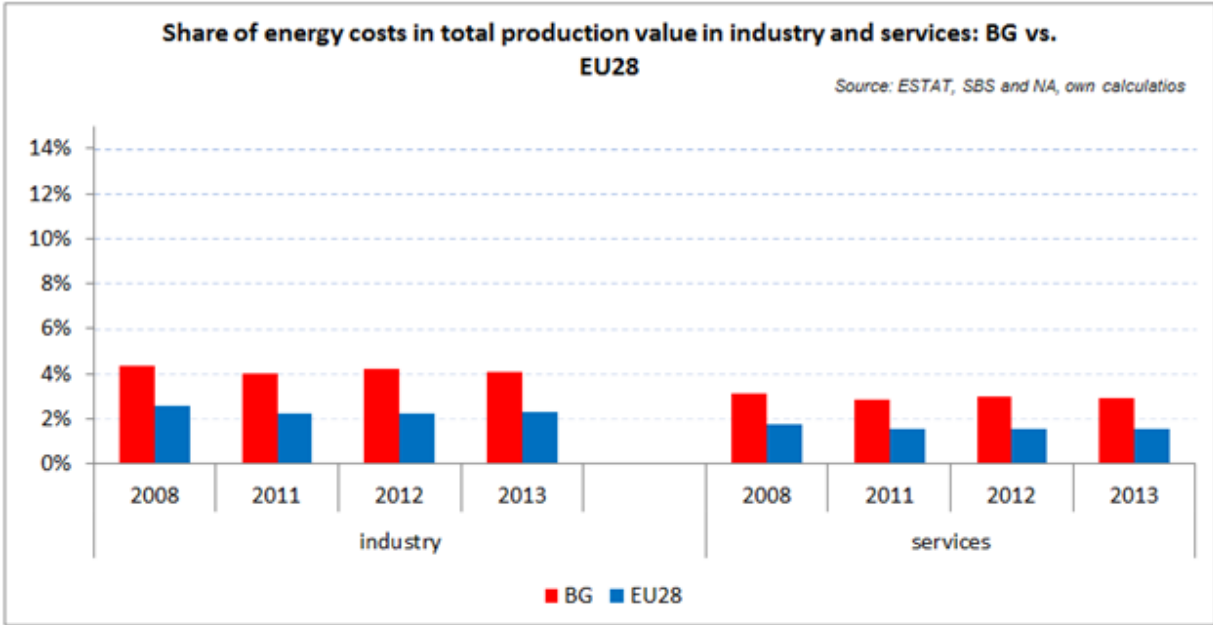
### Energy in Households budgets

#### Bulgaria



Between 2004 (blue line) and 2014 (green line) the share of energy in total household expenditure for the poorest households (Quintile 1) in Bulgaria went up from 10.8% to 14.2%, while for the richest households (Quintile 5) it decreased from 10.7% to 8.4%, implying growing differences in the country in energy affordability across different income quintiles.

**Energy costs shares in total production costs**



Notes  
 Data for Malta, Poland, Slovenia (prior to 2012) and Ireland (after 2012) is not available  
 Data for 2009 and 2010 is incomplete and not reported  
 Industry defined as NACE Rev.2 Section C (Manufacturing)  
 Services defined as NACE Rev. 2 Sections G - U

## Electricity and gas prices – Breakdown by price element

<b>Band DC</b>	<b>EUR/kWh 2015</b>
Price for energy and supply	0.042949
<b>Total energy component</b>	<b>0.042949</b>
Network	0.021986
<b>Total network component</b>	<b>0.021986</b>
Price for high effective combined production of heat and electricity	0.001764
Price for 'green energy supplement'	0.000000
Price for 'non-recoverable expenses'	0.002168
RES Support	0.010441
Critical infrastructure	0.000026
PSO rebate for vulnerable consumers (from stability reserve fund)	-0.000767
VAT	0.015697
<b>Total taxes &amp; levies component</b>	<b>0.029328</b>
<b>Total price</b>	<b>0.094263</b>
<b>Band ID</b>	<b>EUR/kWh 2015</b>
Price for energy and supply	0.042356
<b>Total energy component</b>	<b>0.042356</b>
Network	0.004960
<b>Total network component</b>	<b>0.004960</b>
Price for high effective combined production of heat and electricity	0.001764
Price for 'green energy supplement'	0.000000
Price for 'non-recoverable expenses'	0.002168
Excise Tax	0.001023
RES Support	0.010441
Critical infrastructure	0.000026
PSO rebate for vulnerable consumers (from stability reserve fund)	-0.000767
VAT	0.000000
<b>Total taxes &amp; levies component</b>	<b>0.014654</b>
<b>Total price</b>	<b>0.061970</b>
<b>Band D2</b>	<b>EUR/kWh 2015</b>
<b>Energy</b>	<b>0.026383</b>
<b>Supply</b>	<b>0.001687</b>

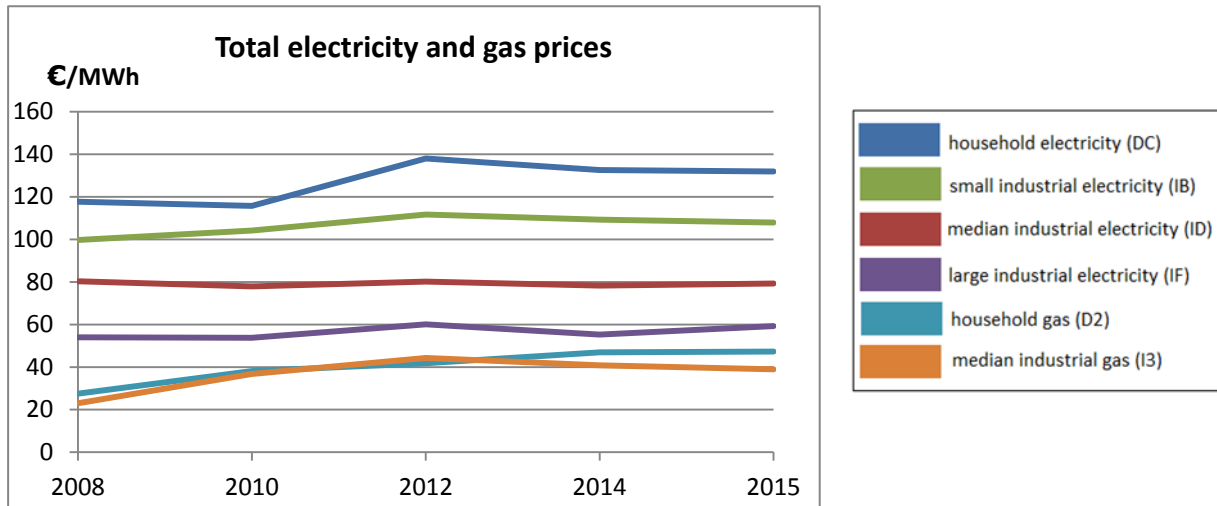
<b>Total energy component</b>	<b>0.028070</b>
<b>Network</b>	<b>0.011709</b>
<b>Total network component</b>	<b>0.011709</b>
<b>VAT</b>	<b>0.007976</b>
<b>Total taxes &amp; levies component</b>	<b>0.007976</b>
<b>Total price</b>	<b>0.047755</b>

<b>Band I3</b>	<b>EUR/kWh 2015</b>
Energy	0.025821
Supply	0.000920
<b>Total energy component</b>	<b>0.026741</b>
Network	0.004346
<b>Total network component</b>	<b>0.004346</b>
VAT	0.000000
Excise Tax	0.001023
<b>Total taxes &amp; levies component</b>	<b>0.001023</b>
<b>Total price</b>	<b>0.032110</b>

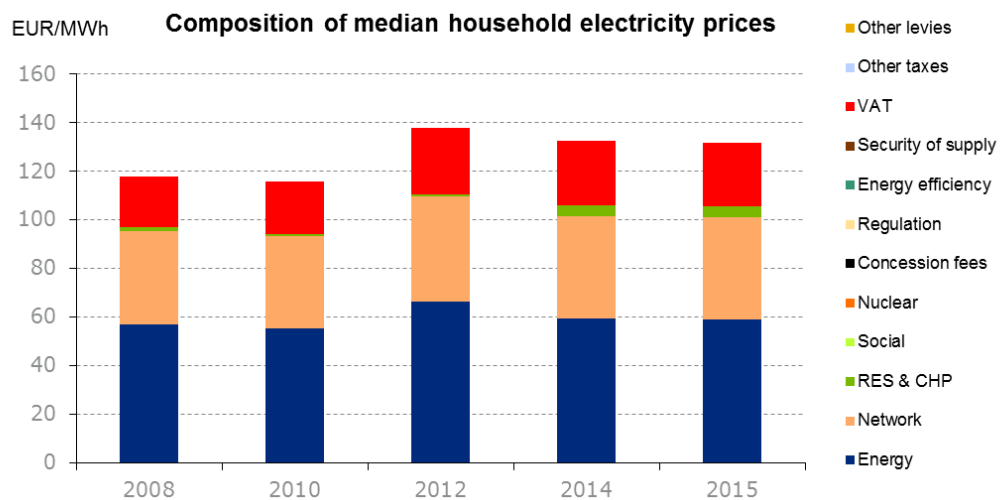
# Croatia

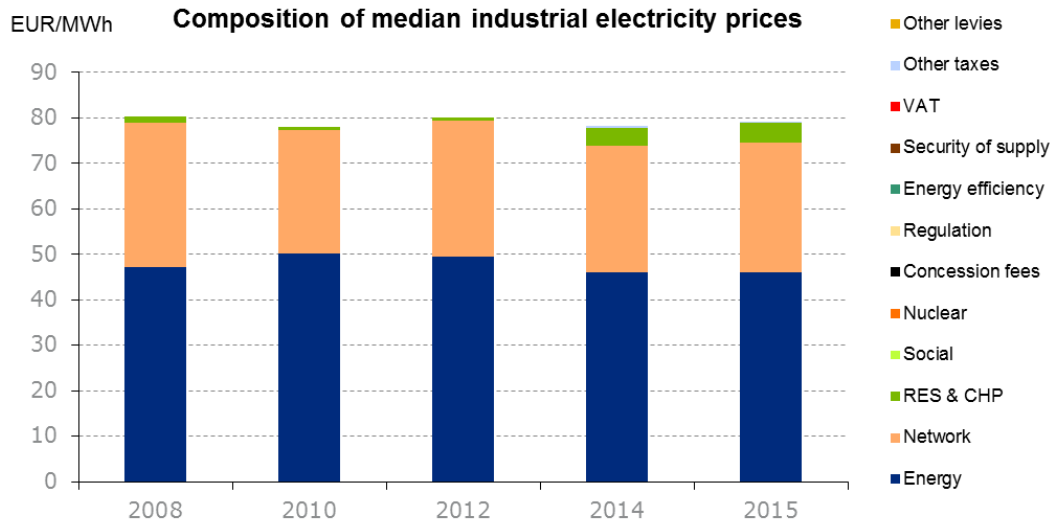


## Evolution of electricity and natural gas prices



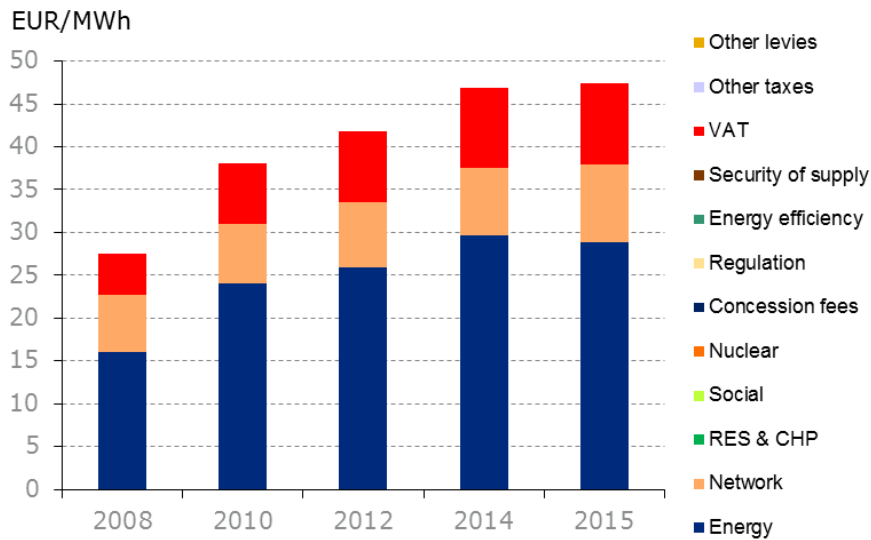
## Composition of electricity prices



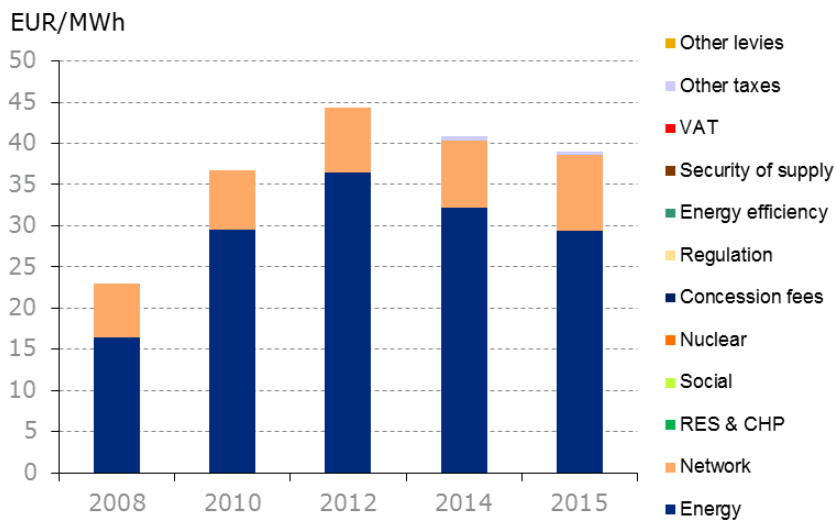


## Composition of gas prices

### Composition of median household gas prices

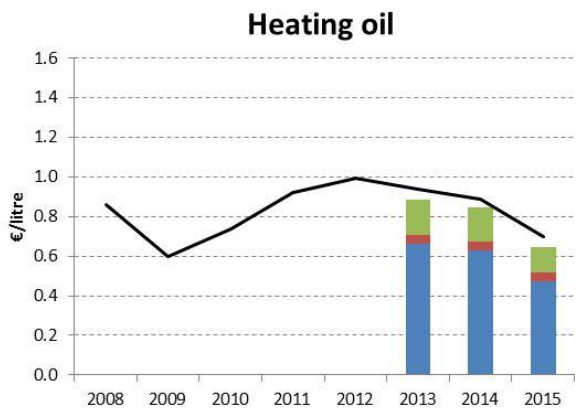
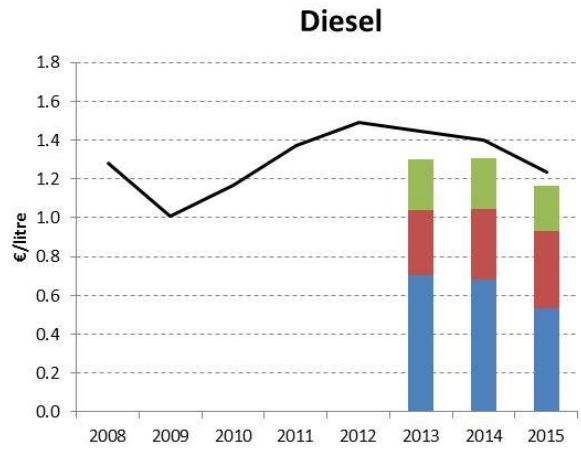
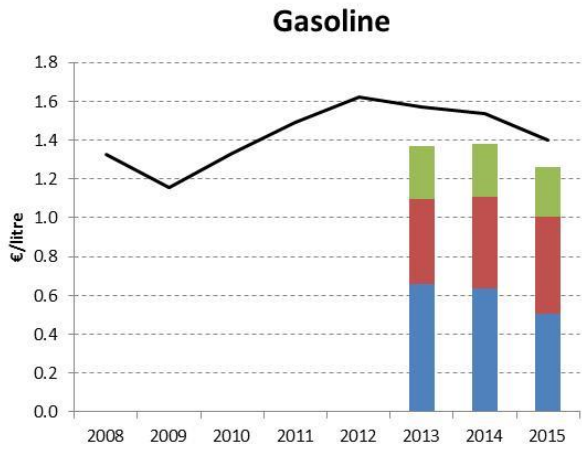


### Composition of median industrial gas prices





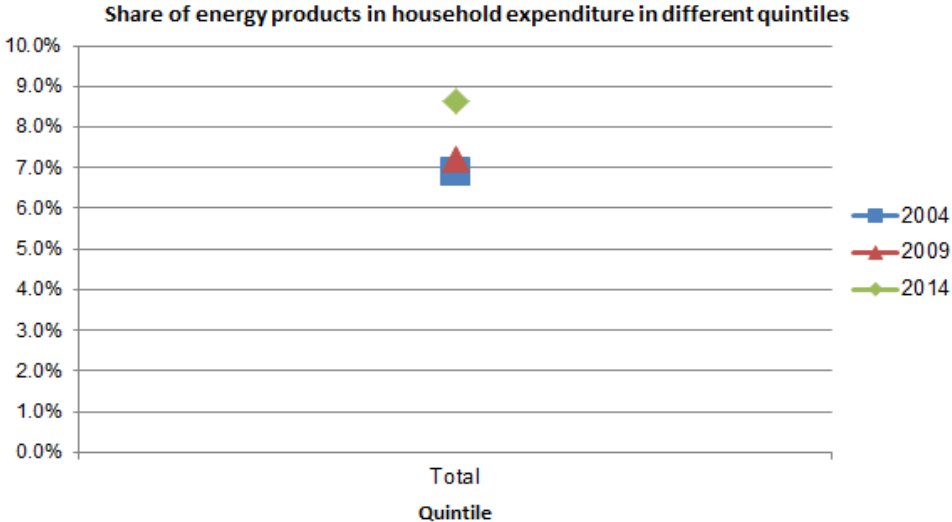
# Oil products prices



- VAT
- Excise duty and other indirect taxes
- Net price
- EU average price

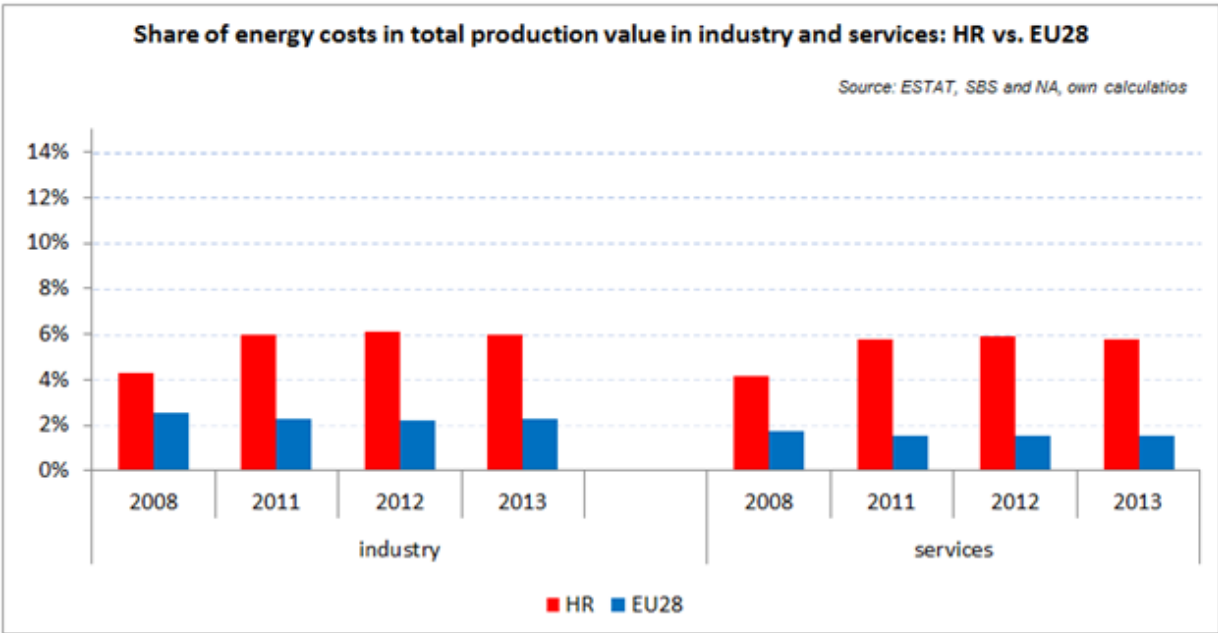
Note: Croatia started reporting oil product prices from 2013

### Energy in Households budgets



In the case of Croatia we only have data for households as whole (without information on different income quintiles) regarding the share of energy in the total expenditure, which practically did not change between 2004 and 2009, however, in 2014 it rose to 8.6% from 6.9% in 2004.

### Energy costs shares in total production costs



Notes  
 Data for Malta, Poland, Slovenia (prior to 2012) and Ireland (after 2012) is not available  
 Data for 2009 and 2010 is incomplete and not reported  
 Industry defined as NACE Rev.2 Section C (Manufacturing)  
 Services defined as NACE Rev. 2 Sections G - U

## Electricity and gas prices – Breakdown by price element

<b>Band DC</b>	<b>EUR/kWh 2015</b>
Energy and supply	0.058806
<b>Total energy component</b>	<b>0.058806</b>
Distribution	0.030559
Transmission	0.011601
<b>Total network component</b>	<b>0.042160</b>
VAT	0.026381
RES support	0.004598
<b>Total taxes &amp; levies component</b>	<b>0.030979</b>
<b>Total price</b>	<b>0.131945</b>

<b>Band ID</b>	<b>EUR/kWh 2015</b>
Energy and supply	0.045957
<b>Total energy component</b>	<b>0.045957</b>
Distribution	0.018919
Transmission	0.009762
<b>Total network component</b>	<b>0.028680</b>
VAT	0.000000
RES support	0.004191
Excise tax	0.000407
<b>Total taxes &amp; levies component</b>	<b>0.004598</b>
<b>Total price</b>	<b>0.079235</b>

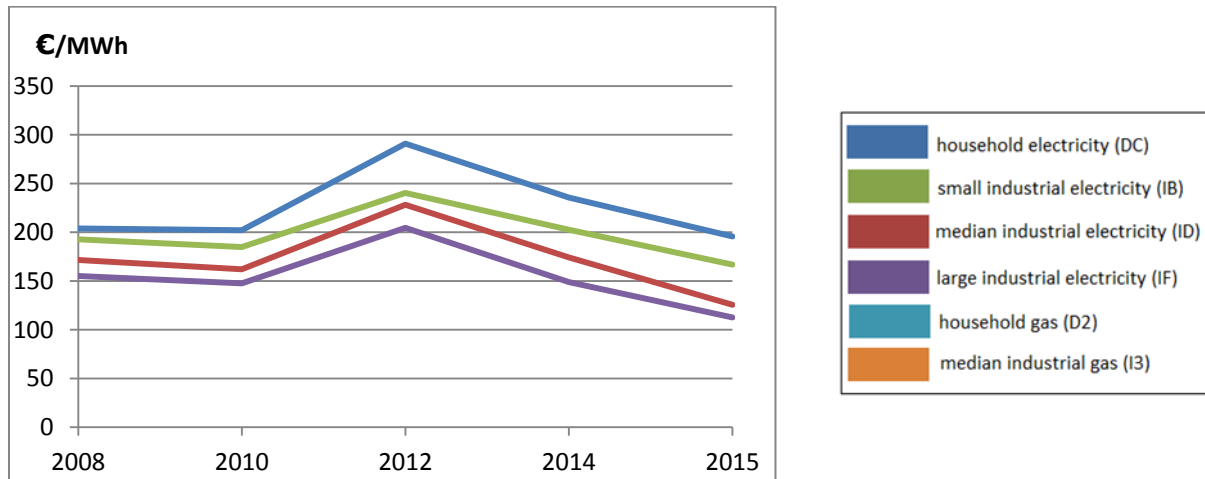
<b>Band D2</b>	<b>EUR/kWh 2015</b>
Energy and supply	0.0288
<b>Total energy component</b>	<b>0.0288</b>
Transmission	0.0024
Distribution	0.0067
<b>Total network component</b>	<b>0.0091</b>
VAT	0.0095

<b>Total taxes &amp; levies component</b>	<b>0.0095</b>
<b>Total price</b>	<b>0.0473</b>

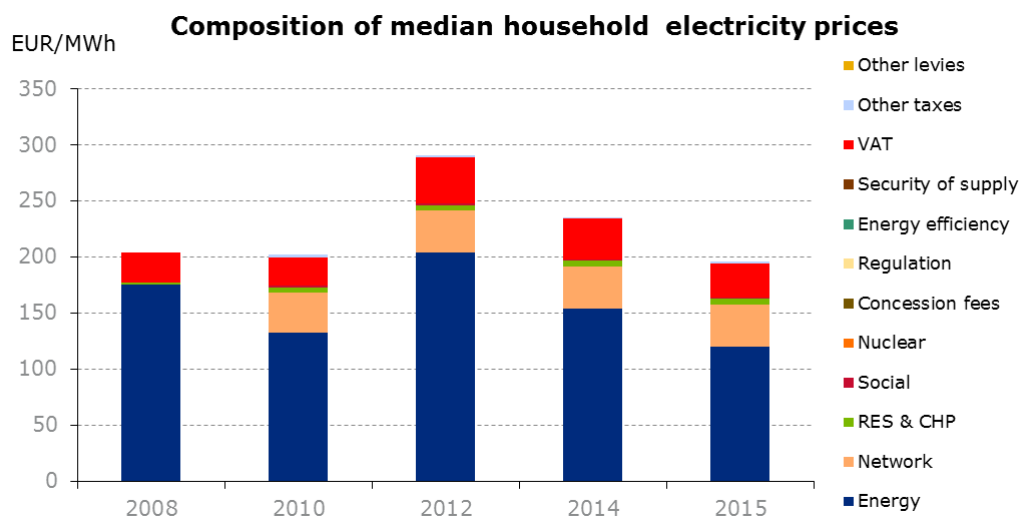
# Cyprus

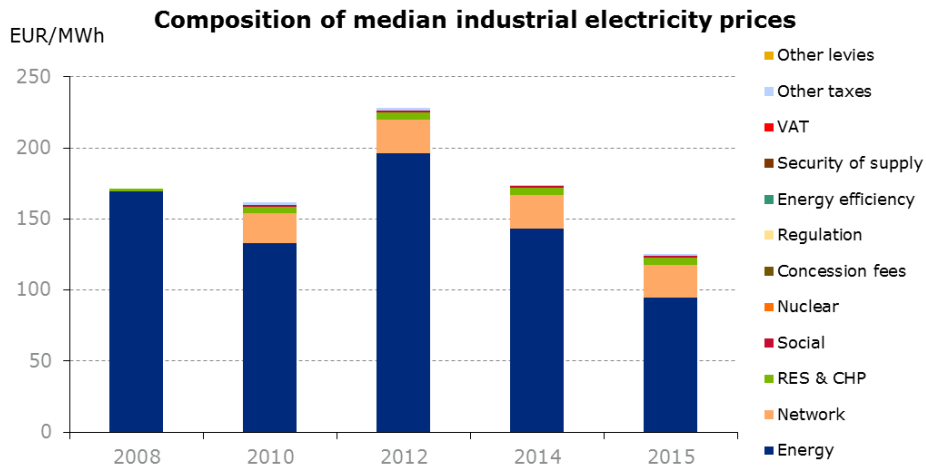


## Evolution of electricity and natural gas prices

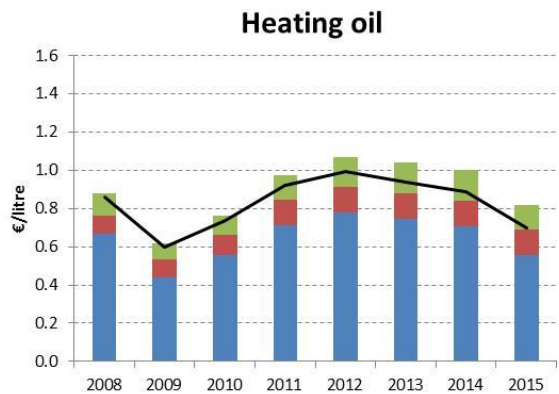
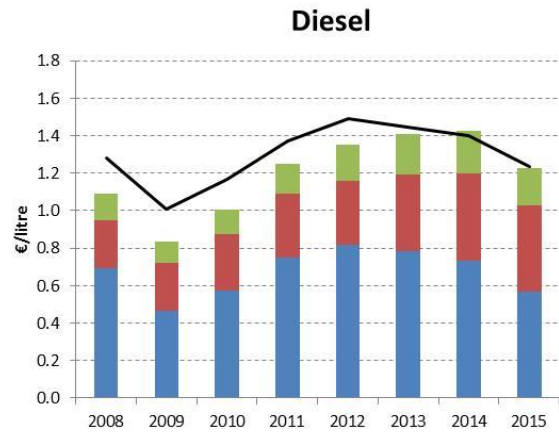
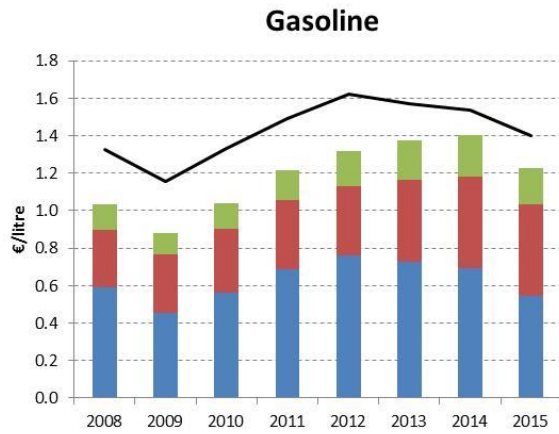


## Composition of electricity prices

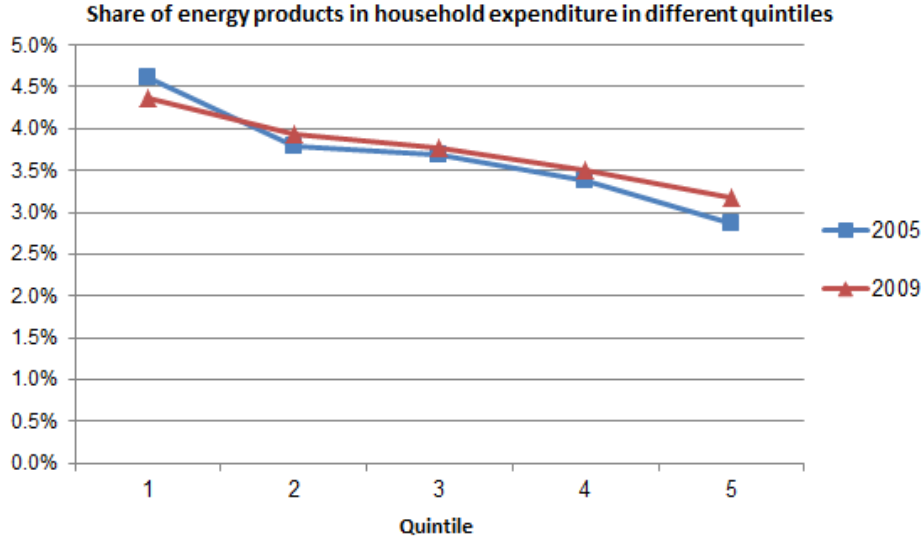




## Oil products prices

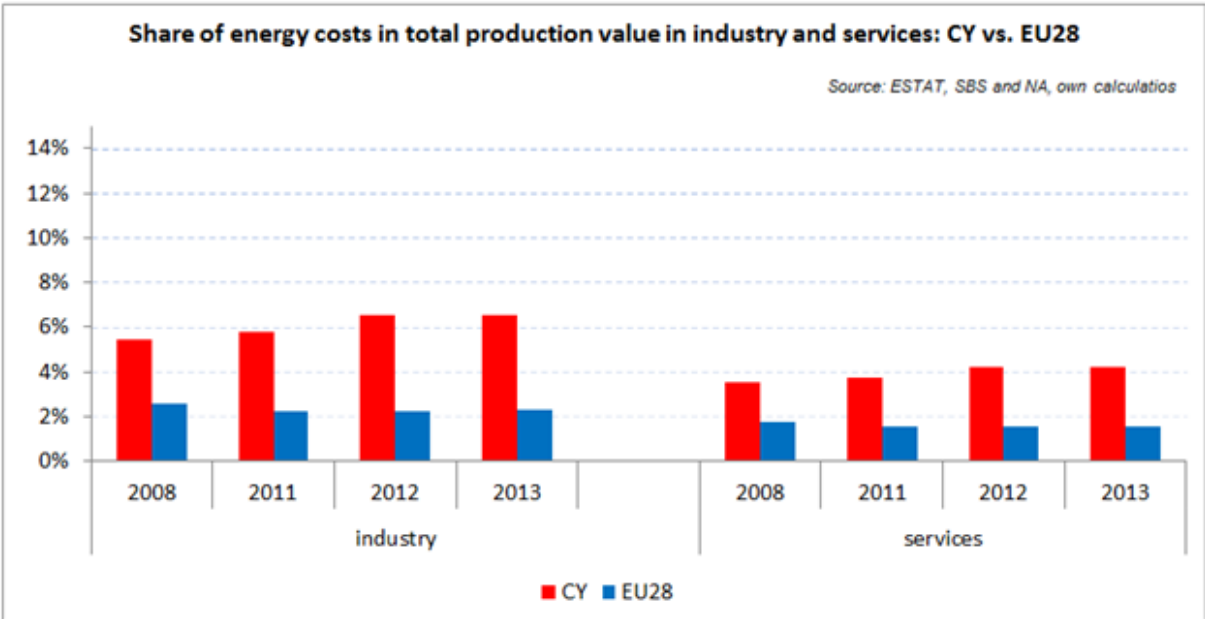


### Energy in Households budgets



In Cyprus the share of energy in the total consumption expenditure remained low in EU comparison between 2005 (blue line) and 2009 (red line): in the case of the poorest households (Quintile 1) the energy share decreased by 0.2% (from 4.6% to 4.4%), while for middle income households (Quintile 3) it remained unchanged.

### Energy costs shares in total production costs



Notes  
 Data for Malta, Poland, Slovenia (prior to 2012) and Ireland (after 2012) is not available  
 Data for 2009 and 2010 is incomplete and not reported  
 Industry defined as NACE Rev.2 Section C (Manufacturing)  
 Services defined as NACE Rev. 2 Sections G - U

## Electricity and gas prices – Breakdown by price element

<b>Band DC</b>	<b>EUR/kWh 2015</b>
Energy Supply and Network	0.000000
Long term reserve	0.000000
Ancillary services	0.002100
Capacity reserve margin	0.004600
Generation and supply	0.113100
<b>Total energy component</b>	<b>0.119800</b>
Transmission System Operator	0.001100
Network	0.036600
<b>Total network component</b>	<b>0.037700</b>
PSO - Vulnerable consumers	0.001400
Greenhouse gas allowances (CO2)	0.001400
RES Support	0.005000
VAT	0.030500
<b>Total taxes &amp; levies component</b>	<b>0.038300</b>
<b>Total price</b>	<b>0.195800</b>

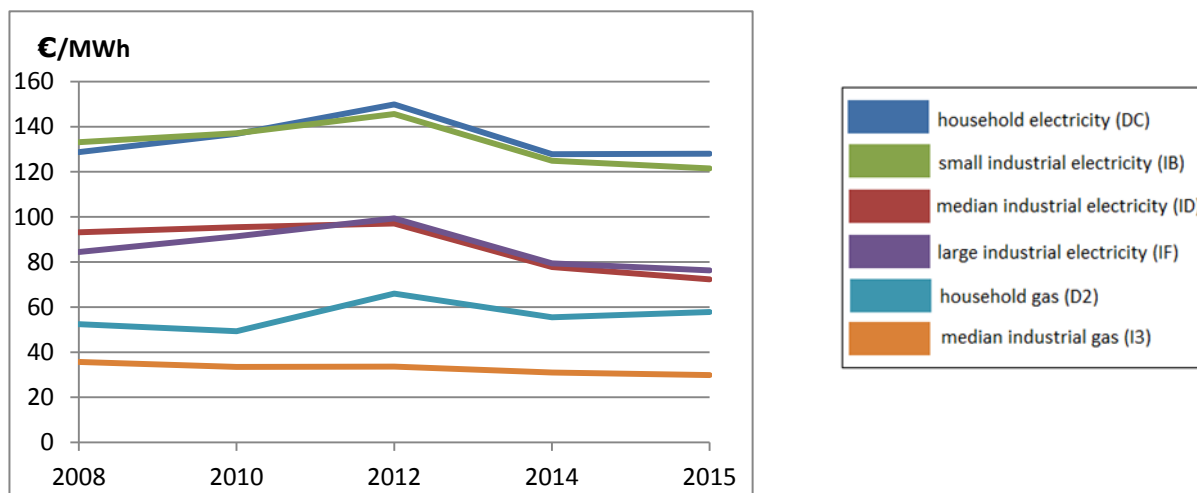
<b>Band ID</b>	<b>EUR/kWh 2015</b>
Energy Supply and Network	0.000000
Long term reserve	0.004600
Ancillary services	0.002100
Generation and supply	0.087800
<b>Total energy component</b>	<b>0.094500</b>
Transmission System Operator	0.001100
Network	0.022200
<b>Total network component</b>	<b>0.023300</b>
PSO - Vulnerable consumers	0.001400
Greenhouse gas allowances (CO2)	0.001400
RES Support	0.005000
VAT	0.000000
<b>Total taxes &amp; levies component</b>	<b>0.007300</b>
<b>Total price</b>	<b>0.125100</b>



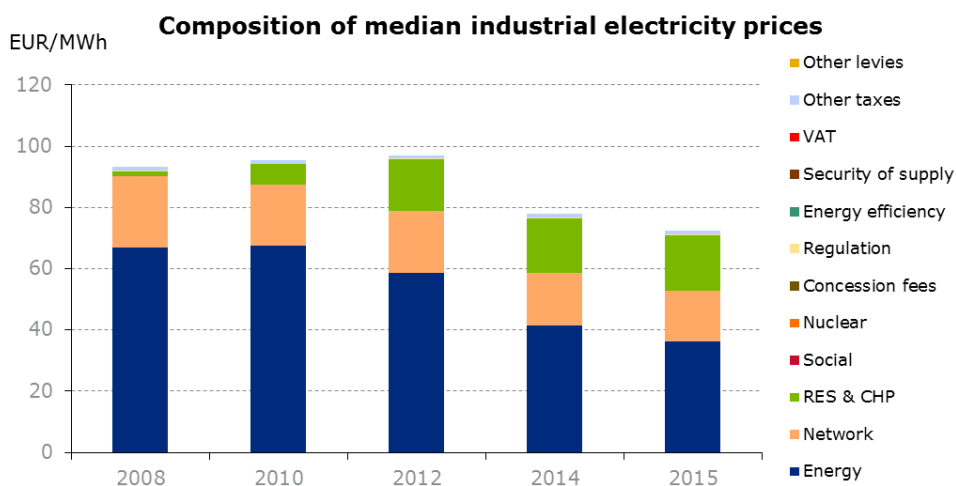
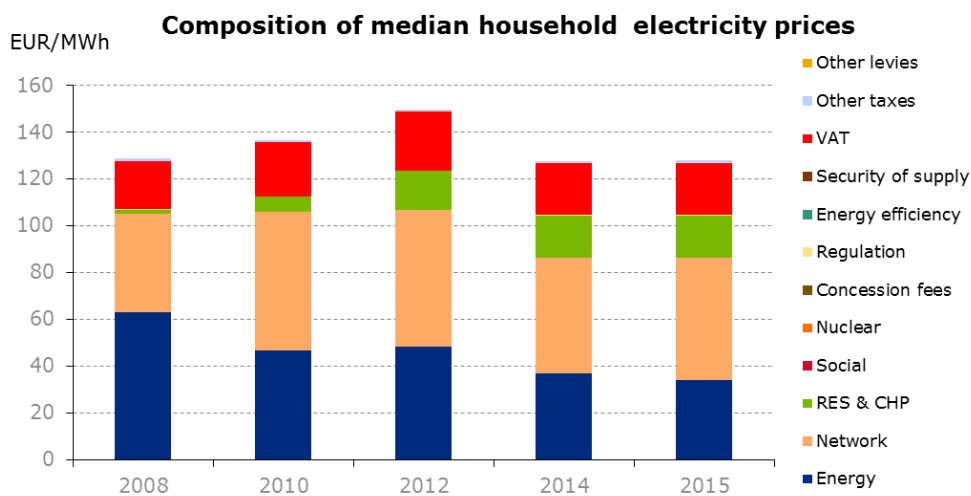
# Czech Republic



## Evolution of electricity and natural gas prices

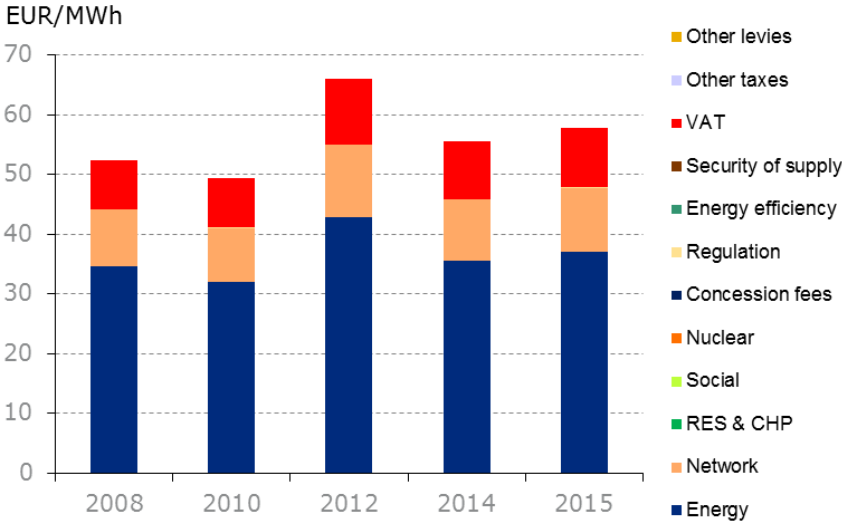


## Composition of electricity prices

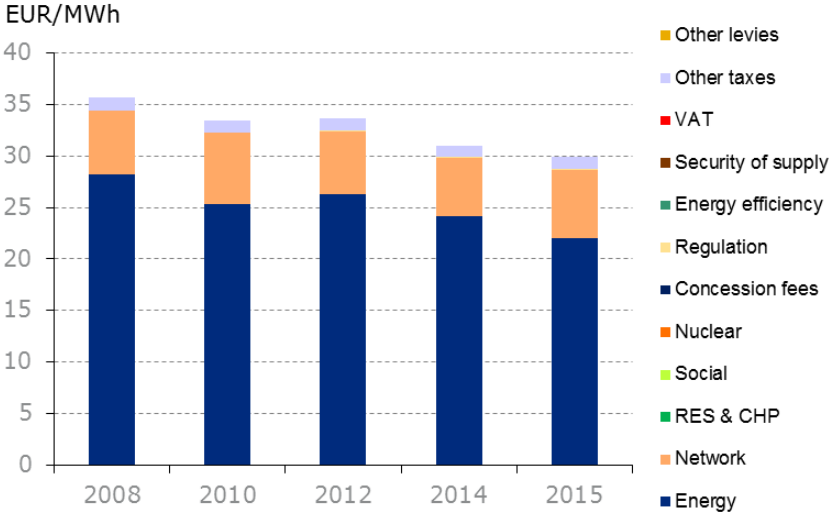


# Composition of gas prices

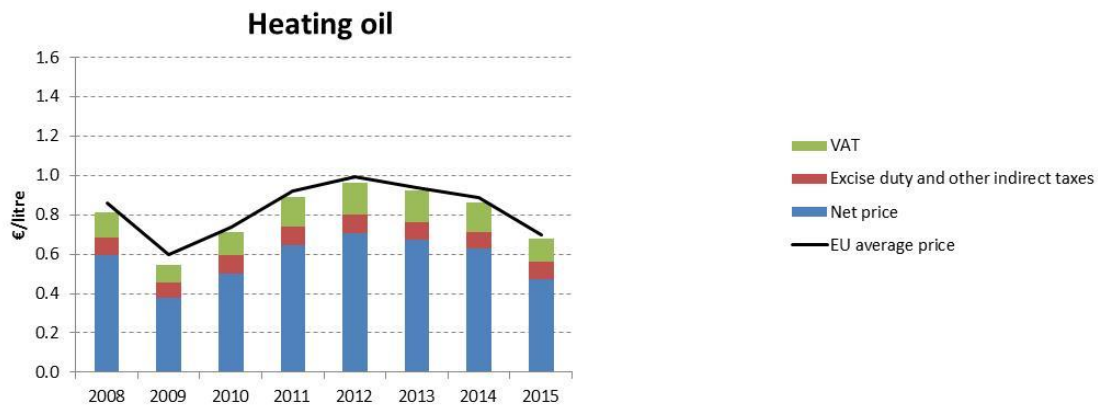
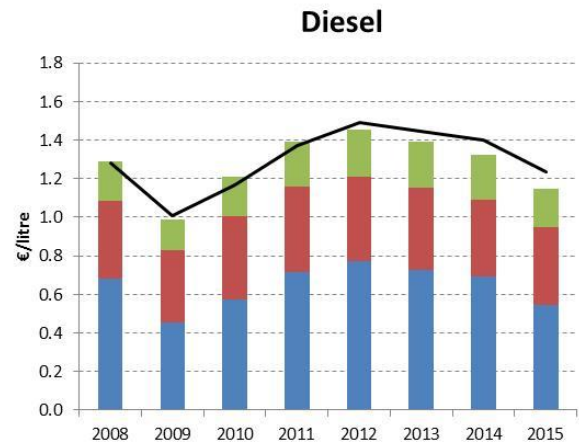
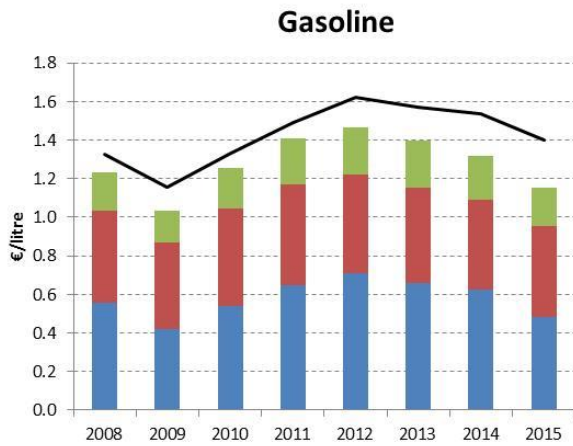
## Composition of median household gas prices



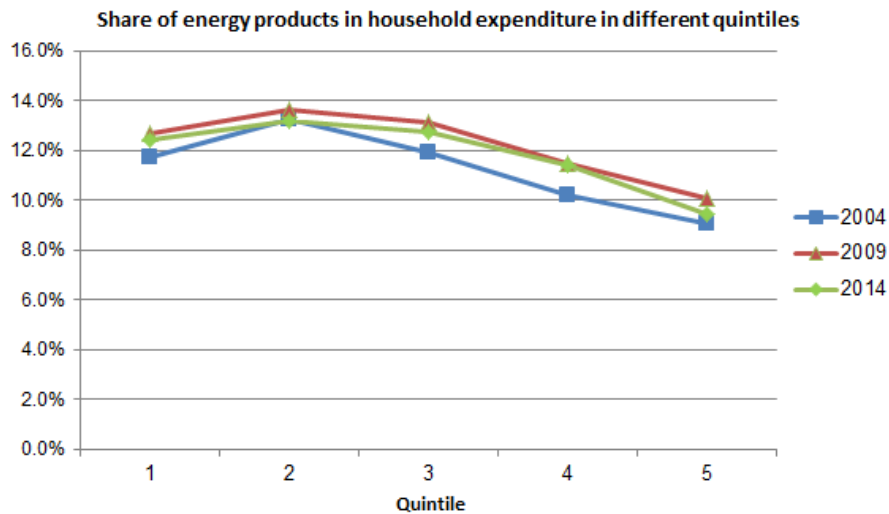
## Composition of median industrial gas prices



# Oil products prices



## Energy in Households budgets

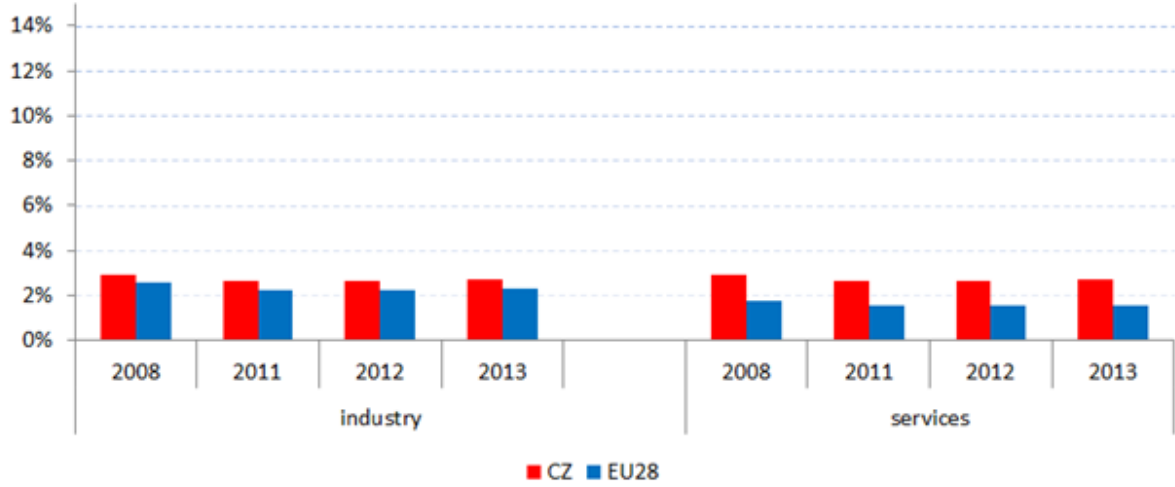


In the Czech Republic the share of energy in the total household expenditure rose by 0.5-1% across different income quintiles between 2004 (blue line) and 2014 (green line), amounting to 12.4% in 2014 for the poorest households (Quintile 1) and to 12.7% for middle income households (Quintile 3).

## Energy costs shares in total production costs

### Share of energy costs in total production value in industry and services: CZ vs. EU28

Source: ESTAT, SBS and NA, own calculations



**Notes**

Data for Malta, Poland, Slovenia (prior to 2012) and Ireland (after 2012) is not available

Data for 2009 and 2010 is incomplete and not reported

Industry defined as NACE Rev.2 Section C (Manufacturing)

Services defined as NACE Rev. 2 Sections G - U

## Electricity and gas prices – Breakdown by price element

<b>Band DC</b>	<b>EUR/kWh 2015</b>
Energy	0.034065
<b>Total energy component</b>	<b>0.034065</b>
Transmission	0.003857
Distribution	0.048453
<b>Total network component</b>	<b>0.052310</b>
VAT	0.022216
electricity (environmental) tax	0.001037
charge for market operator	0.000253
RES Support	0.018131
<b>Total taxes &amp; levies component</b>	<b>0.041636</b>
<b>Total price</b>	<b>0.128012</b>

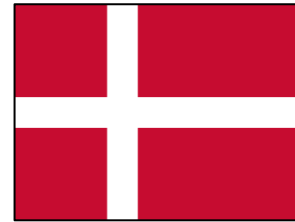
<b>Band ID</b>	<b>EUR/kWh 2015</b>
Energy	0.036333
<b>Total energy component</b>	<b>0.036333</b>
Transmission	0.003857
Distribution	0.012692
<b>Total network component</b>	<b>0.016549</b>
VAT	0.000000
electricity (environmental) tax	0.001037
charge for market operator	0.000253
RES Support	0.018131
<b>Total taxes &amp; levies component</b>	<b>0.019421</b>
<b>Total price</b>	<b>0.072303</b>

<b>Band D2</b>	<b>EUR/kWh 2015</b>
Energy	0.036985
<b>Total energy component</b>	<b>0.036985</b>
Transmission	0.005359
Distribution	0.005377

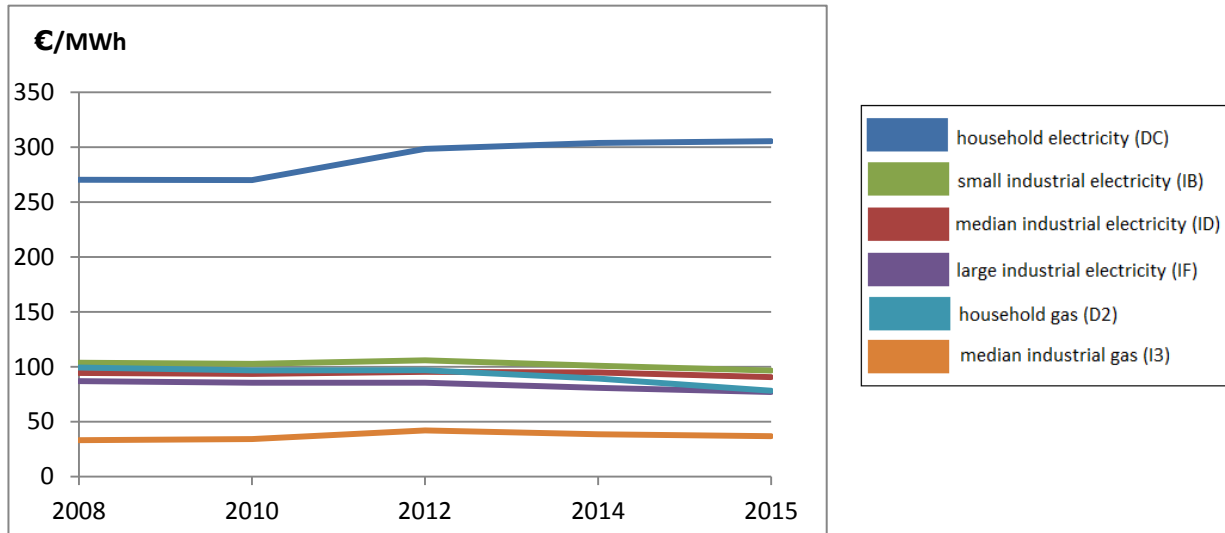
<b>Total network component</b>	<b>0.010736</b>
Charge for market operator	0.000081
VAT	0.010040
<b>Total taxes &amp; levies component</b>	<b>0.010121</b>
<b>Total price</b>	<b>0.057841</b>

<b>Band I3</b>	<b>EUR/kWh</b> <b>2015</b>
Energy	0.022029
<b>Total energy component</b>	<b>0.022029</b>
Transmission	0.000418
Distribution	0.006238
<b>Total network component</b>	<b>0.006656</b>
Charge for market operator	0.000081
VAT	0.000000
Environmental tax	0.001121
<b>Total taxes &amp; levies component</b>	<b>0.001201</b>
<b>Total price</b>	<b>0.029886</b>

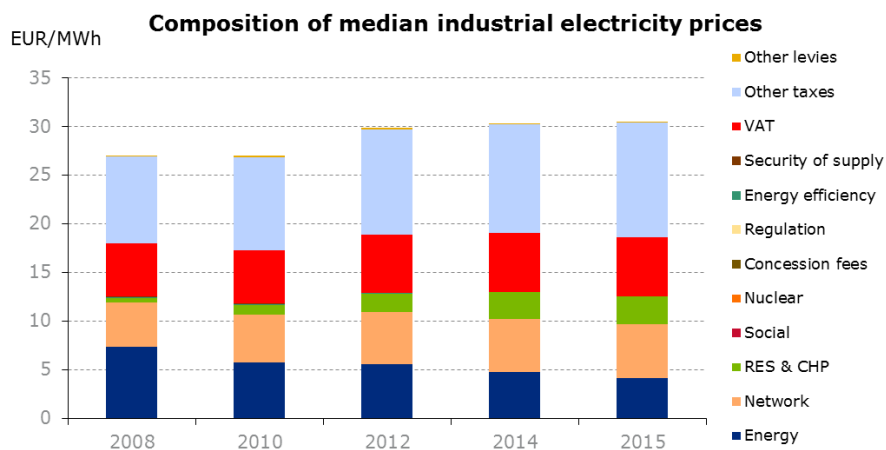
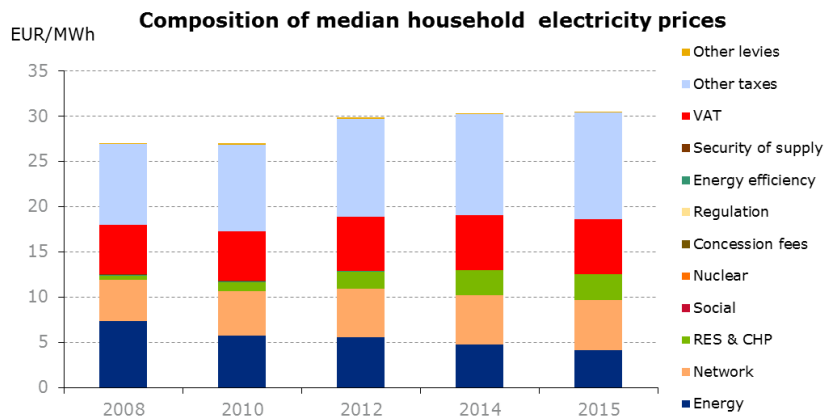
# Denmark



## Evolution of electricity and natural gas prices

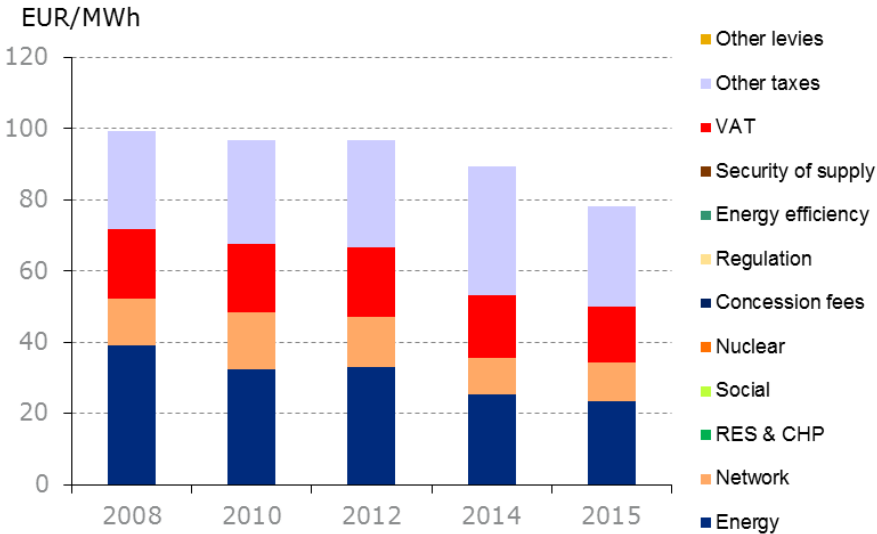


## Composition of electricity prices

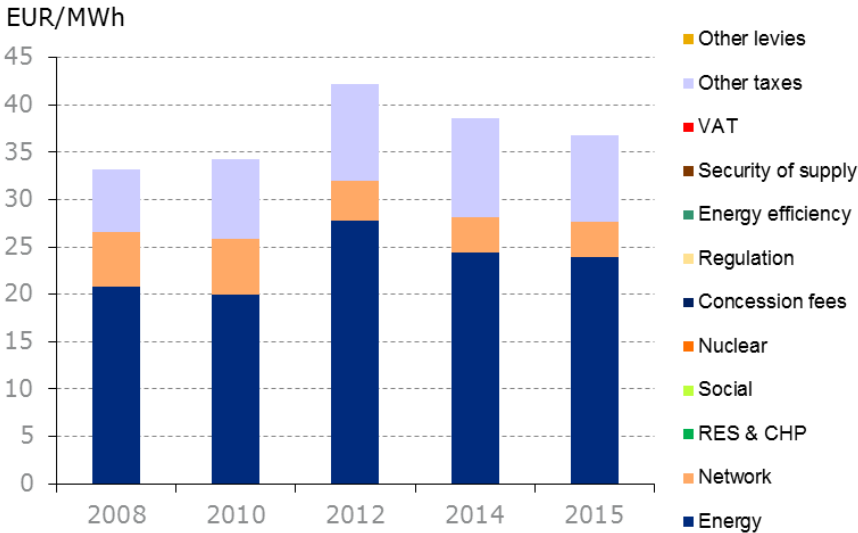


# Composition of gas prices

## Composition of median household gas prices

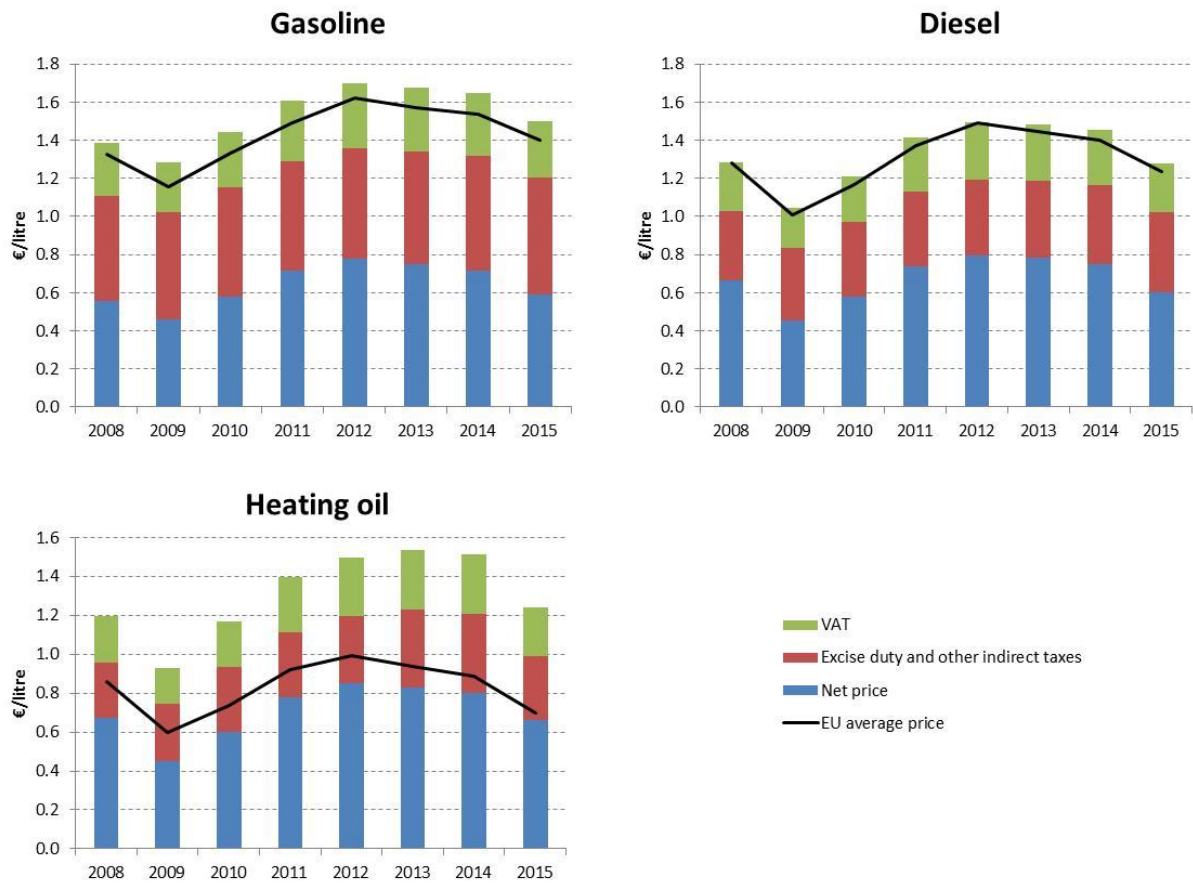


## Composition of median industrial gas prices

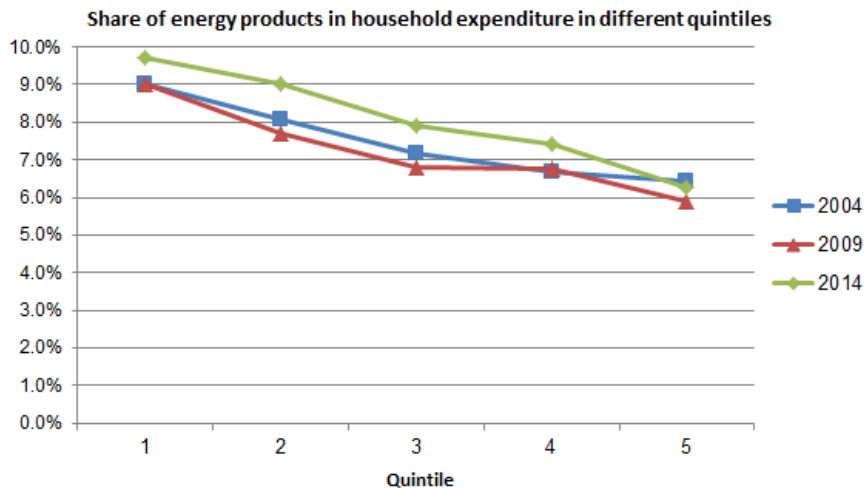


# Oil products prices



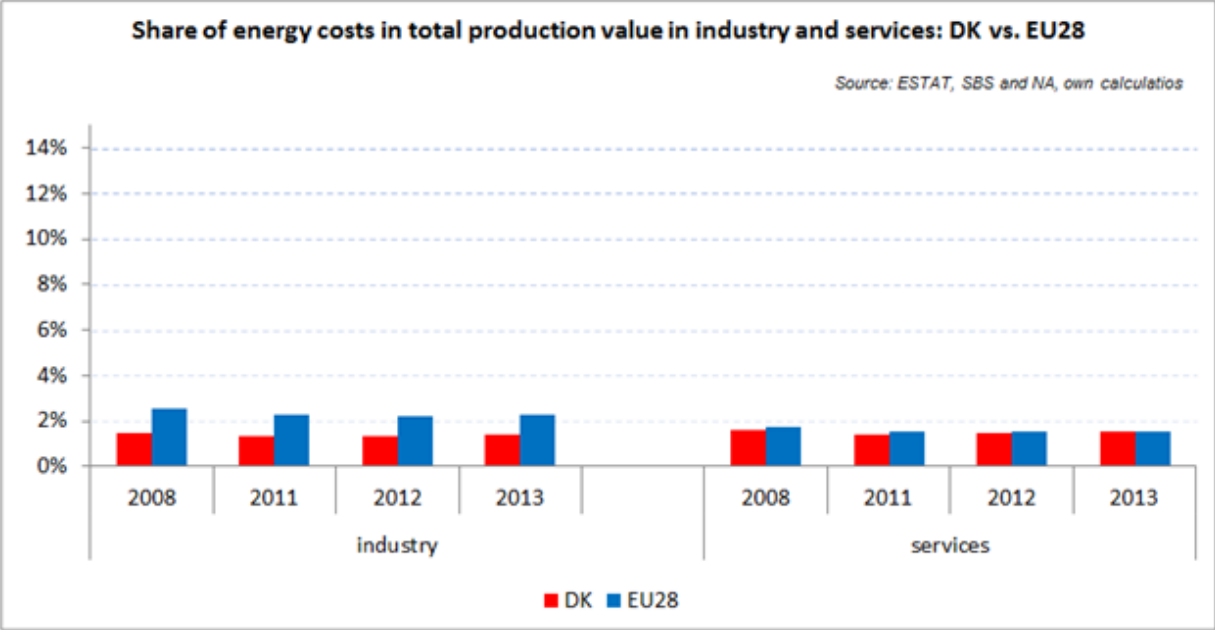


### Energy in Households budgets



Between 2009 (red line) and 2014 (green line) the share of energy in the total household expenditure in Denmark went up from 9% to 9.7% in the case of the poorest households (Quintile 1), while in the case of middle income households (Quintile 3) it rose from 6.8% to 7.9%.

# Energy costs shares in total production costs



Notes  
 Data for Malta, Poland, Slovenia (prior to 2012) and Ireland (after 2012) is not available  
 Data for 2009 and 2010 is incomplete and not reported  
 Industry defined as NACE Rev.2 Section C (Manufacturing)  
 Services defined as NACE Rev. 2 Sections G - U

## Electricity and gas prices – Breakdown by price element

<b>Band DC</b>	<b>EUR/kWh 2015</b>
Subscription supplier	0.004424
Energy	0.036736
<b>Total energy component</b>	<b>0.041161</b>
Local network tariff	0.027498
Overlying network tariff	0.000644
Transmission and system tariff	0.009519
Subscription network company	0.017805
<b>Total network component</b>	<b>0.055466</b>
Electricity tax	0.117716
VAT	0.061097
Electricity distribution tax	
Electricity-saving contribution	
Energy saving tax	
PSO_Support for RE	0.022980
PSO_Support for CHP	0.005202
PSO_Support for security of Supply	0.000308
PSO_Compensation for CO2 levy	0.000697
PSO_Support for R&D	0.000912
<b>Total taxes &amp; levies component</b>	<b>0.208913</b>
<b>Total price</b>	<b>0.305540</b>

<b>Band ID</b>	<b>EUR/kWh 2015</b>
Energy	0.036093
<b>Total energy component</b>	<b>0.036093</b>
Local network tariff	0.013260
Overlying network tariff	0.000402
Transmission and system tariff	0.009519
Subscription network company	0.000737
<b>Total network component</b>	<b>0.023919</b>
Electricity tax	0.000536
VAT	0.000000
Electricity distribution tax	
Electricity-saving contribution	

Energy saving tax	
PSO_Support for RE	0.022927
PSO_Support for CHP	0.005229
PSO_Support for security of Supply	0.000268
PSO_Compensation for CO2 levy	0.000670
PSO_Support for R&D	0.000939
<b>Total taxes &amp; levies component</b>	<b>0.030569</b>
<b>Total price</b>	<b>0.090580</b>

<b>Band D2</b>	<b>EUR/kWh 2015</b>
Energy	0.023329
<b>Total energy component</b>	<b>0.023329</b>
Emergency tariff	0.000067
Distribution	0.010833
<b>Total network component</b>	<b>0.010900</b>
Carbon Tax	0.004237
NOx tax	0.000469
VAT	0.015650
Natural gas tax	0.023731
<b>Total taxes &amp; levies component</b>	<b>0.044087</b>
<b>Total price</b>	<b>0.078316</b>

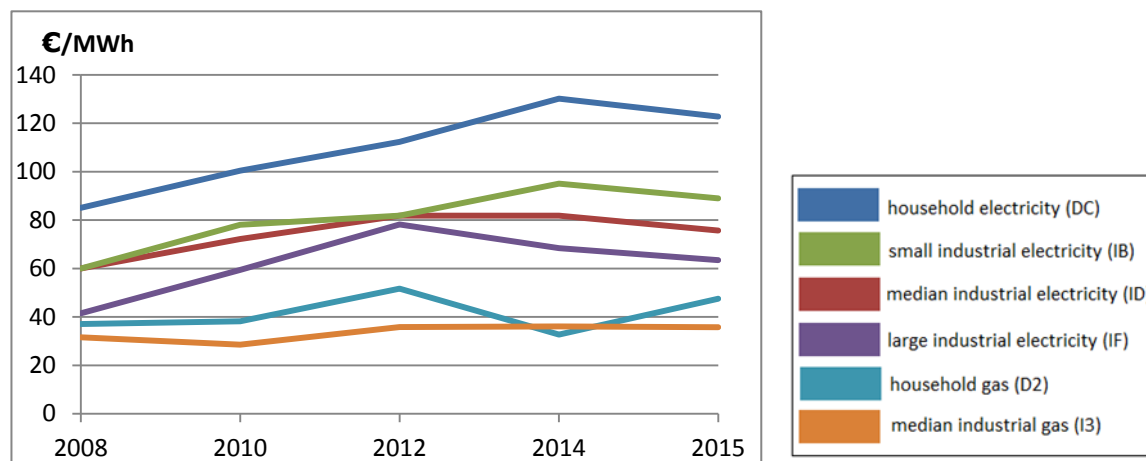
<b>Band I3</b>	<b>EUR/kWh 2015</b>
Energy	0.023865
<b>Total energy component</b>	<b>0.023865</b>
Emergency tariff	0.000027
Distribution	0.003727
<b>Total network component</b>	<b>0.003754</b>
Carbon Tax	0.003499
NOx tax	0.000469
VAT	0.000000
Natural gas tax	0.005242
<b>Total taxes &amp; levies component</b>	<b>0.009211</b>

<b>Total price</b>	<b>0.036830</b>
--------------------	-----------------

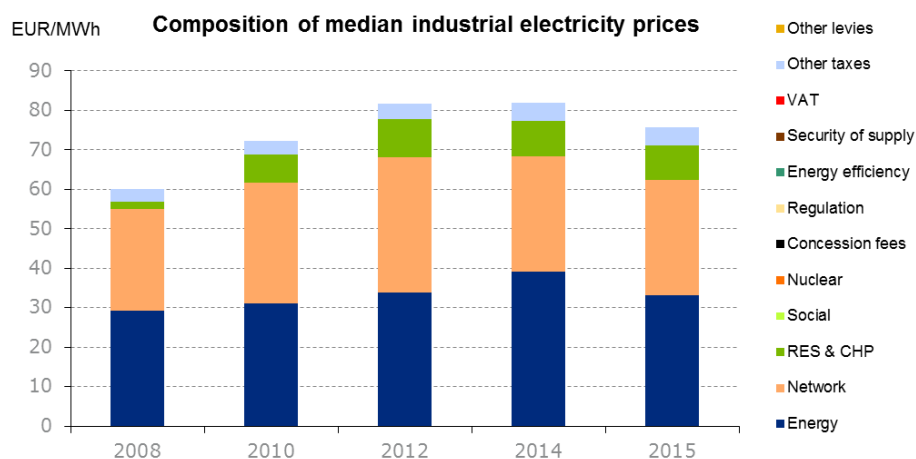
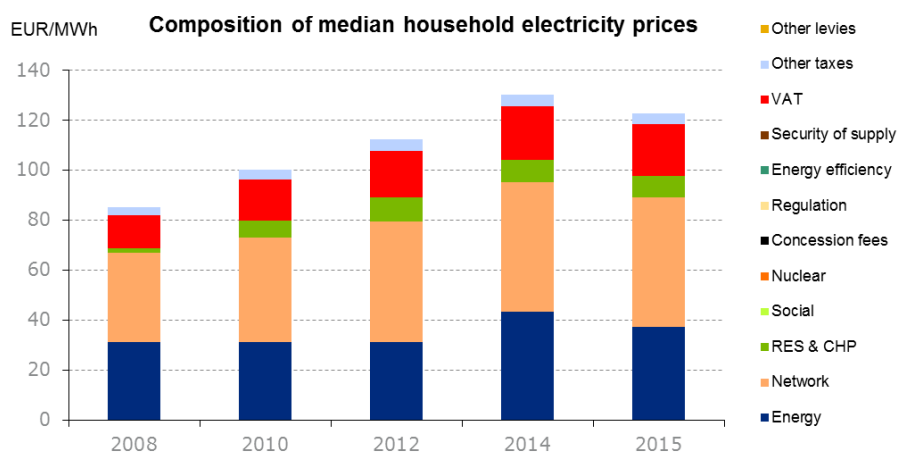
# Estonia



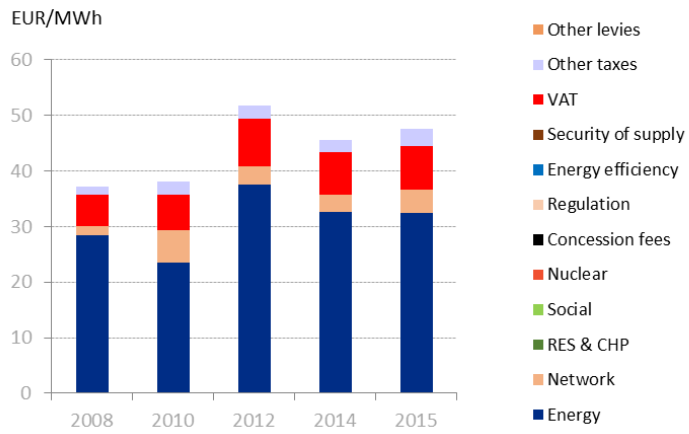
## Evolution of electricity and natural gas prices



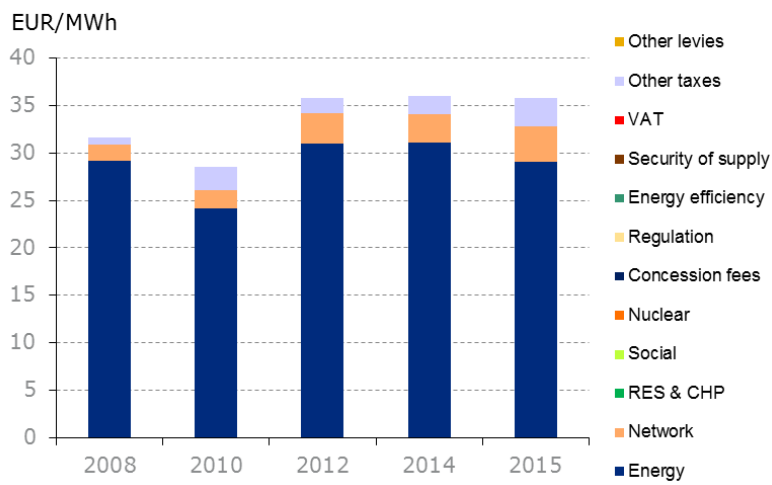
## Composition of electricity prices



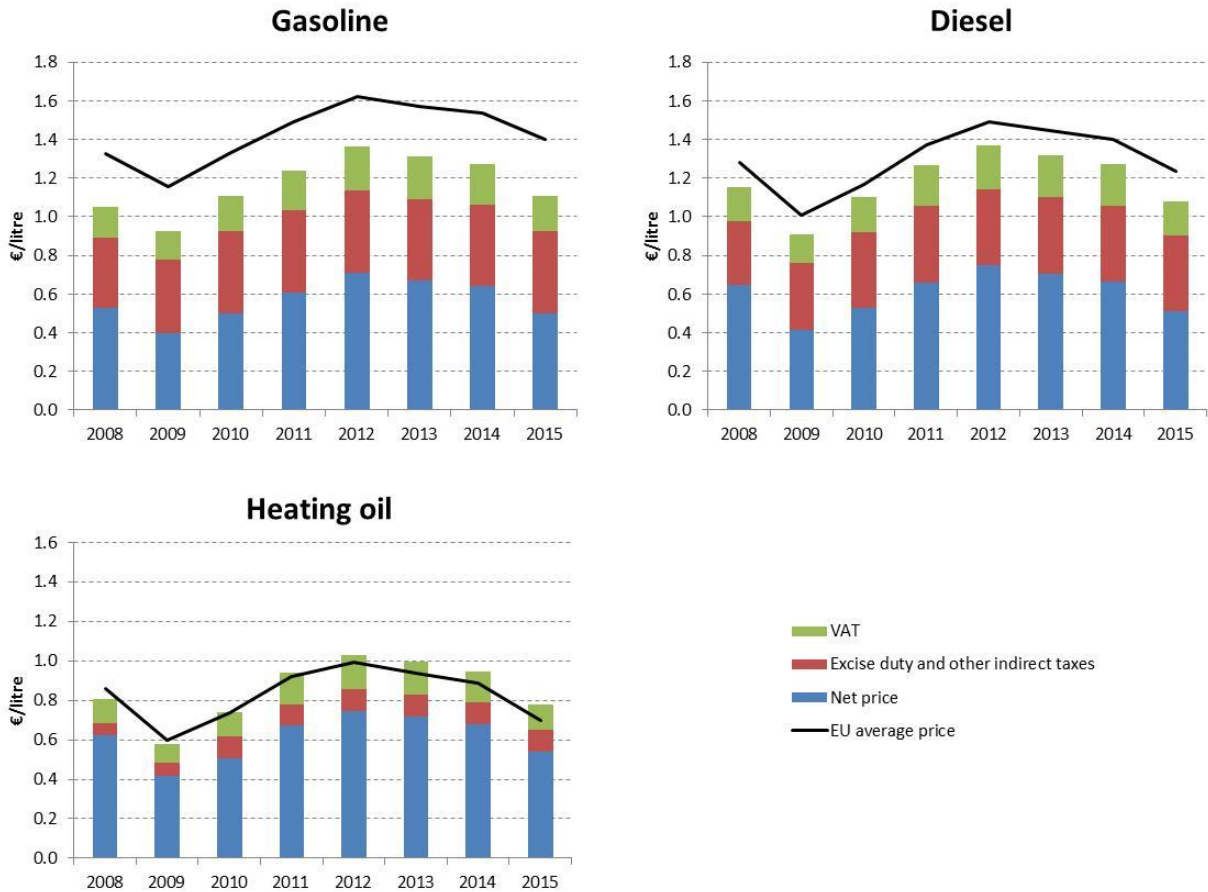
## Composition of gas prices



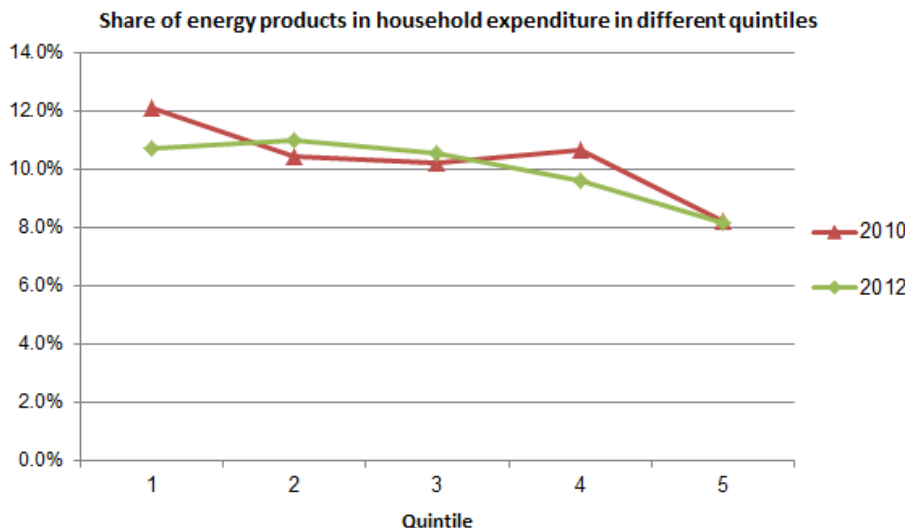
### Composition of median industrial gas prices



### Oil products prices



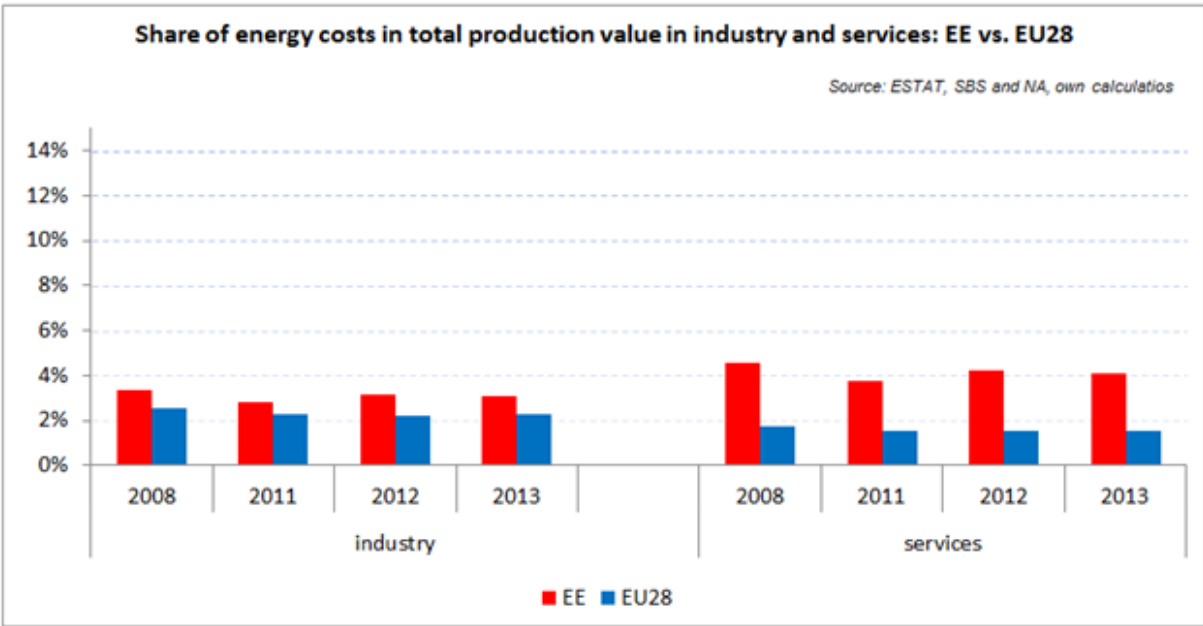
### Energy in Households budgets



In Estonia the share of energy products in the total household expenditure slightly decreased between 2010 (red line) and 2012 (green line) for the poorest households (Quintile 1) (from 11.2% to 10.7%), while for households with middle (Quintile 3) and with high income (Quintile 5) it remained practically unchanged.

### Energy costs shares in total production costs





Notes  
 Data for Malta, Poland, Slovenia (prior to 2012) and Ireland (after 2012) is not available  
 Data for 2009 and 2010 is incomplete and not reported  
 Industry defined as NACE Rev.2 Section C (Manufacturing)  
 Services defined as NACE Rev. 2 Sections G - U

## Electricity and gas prices – Breakdown by price element

<b>Band DC</b>	<b>EUR/kWh 2015</b>
Energy and supply	0.037360
<b>Total energy component</b>	<b>0.037360</b>
Network	0.051620
<b>Total network component</b>	<b>0.051620</b>
VAT	0.020470
Excise Tax	0.004470
Support for renewable energy	0.008900
<b>Total taxes &amp; levies component</b>	<b>0.033840</b>
<b>Total price</b>	<b>0.122820</b>

<b>Band ID</b>	<b>EUR/kWh 2015</b>
Energy and supply	0.033110
<b>Total energy component</b>	<b>0.033110</b>
Network	0.029200
<b>Total network component</b>	<b>0.029200</b>
VAT	0.000000
Excise Tax	0.004470
Support for renewable energy	0.008900
<b>Total taxes &amp; levies component</b>	<b>0.013370</b>
<b>Total price</b>	<b>0.075680</b>

<b>Band D2</b>	<b>EUR/kWh 2015</b>
Energy and supply	0.032520
<b>Total energy component</b>	<b>0.032520</b>
Network	0.004080
<b>Total network component</b>	<b>0.004080</b>
VAT	0.007920
Excise Tax	0.002980

<b>Total taxes &amp; levies component</b>	<b>0.010900</b>
<b>Total price</b>	<b>0.047500</b>

<b>Band I3</b>	<b>EUR/kWh 2015</b>
Energy and supply	0.029080
<b>Total energy component</b>	<b>0.029080</b>
Network	0.003690
<b>Total network component</b>	<b>0.003690</b>
VAT	0.000000
Excise Tax	0.002980
<b>Total taxes &amp; levies component</b>	<b>0.002980</b>
<b>Total price</b>	<b>0.035750</b>