



Brussels, 30.11.2016  
SWD(2016) 420 final

PART 11/13

**COMMISSION STAFF WORKING DOCUMENT**  
*Accompanying the document*

**REPORT FROM THE COMMISSION TO THE EUROPEAN PARLIAMENT, THE  
COUNCIL, THE EUROPEAN ECONOMIC AND SOCIAL COMMITTEE AND THE  
COMMITTEE OF THE REGIONS**

**Energy prices and costs in Europe**

{COM(2016) 769 final}

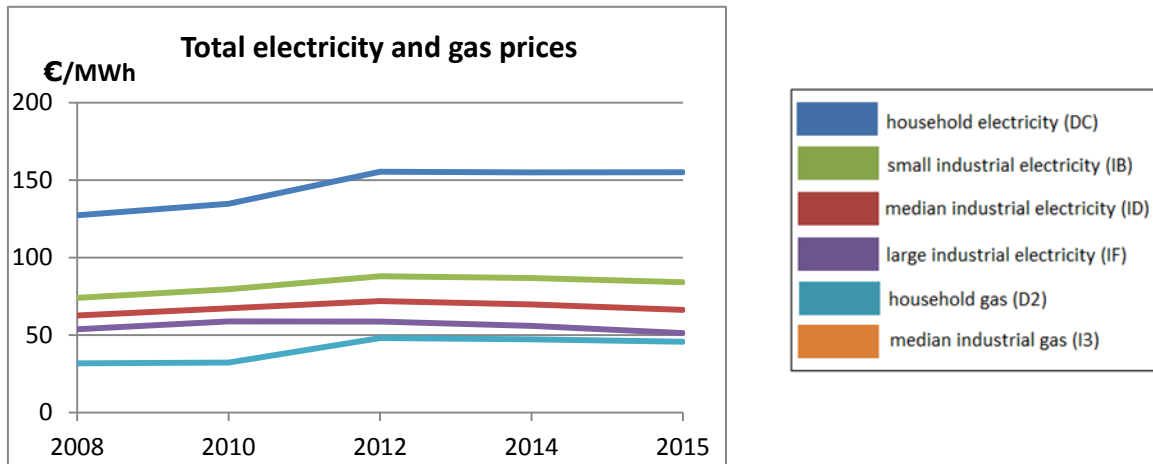
**Contents**

**FINLAND..... 393**  
**FRANCE ..... 399**  
**GERMANY ..... 405**  
**GREECE ..... 411**  
**HUNGARY ..... 417**  
**IRELAND..... 423**  
**ITALY..... 428**

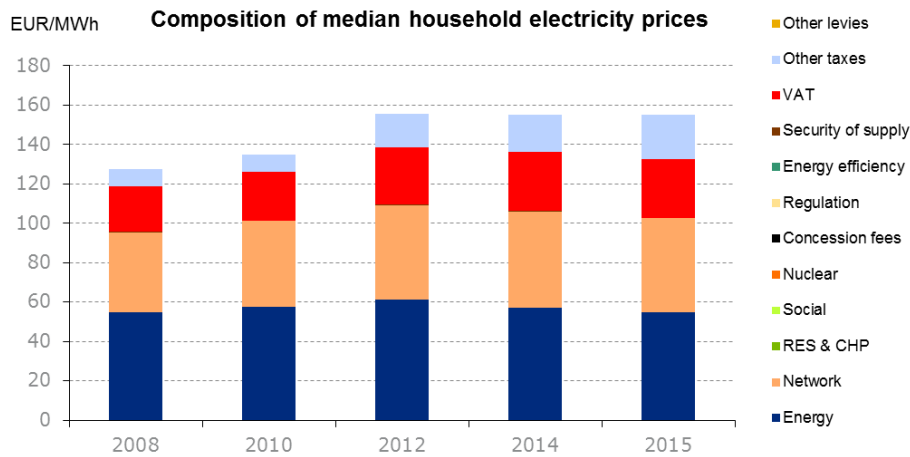
# Finland

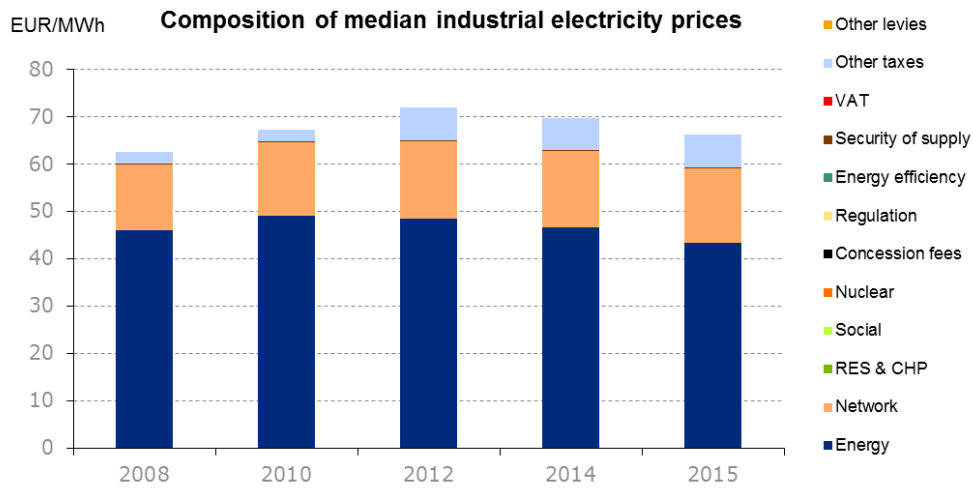


## Evolution of electricity and natural gas prices

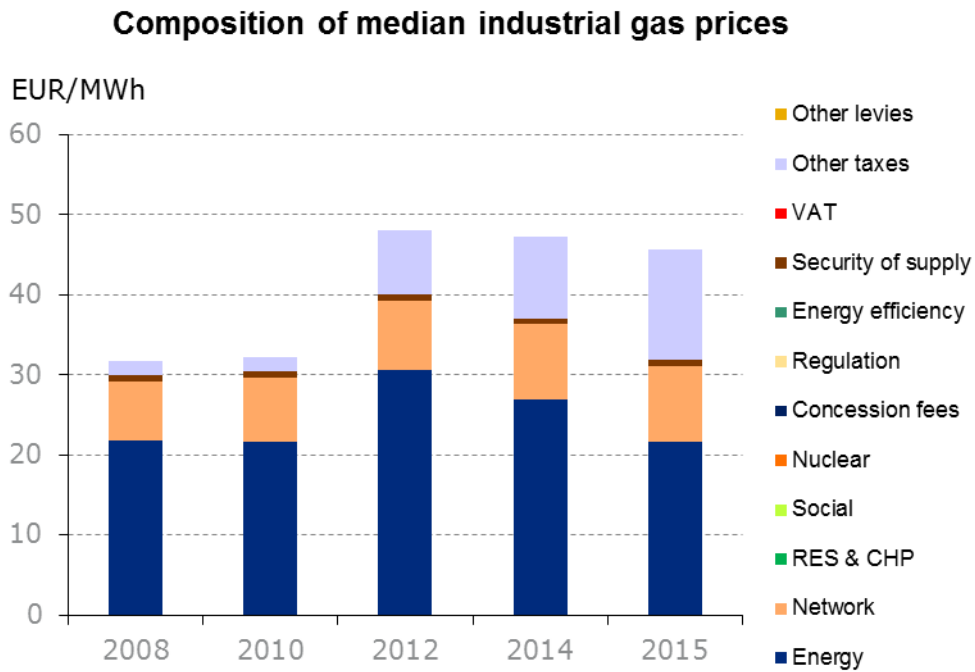


## Composition of electricity prices

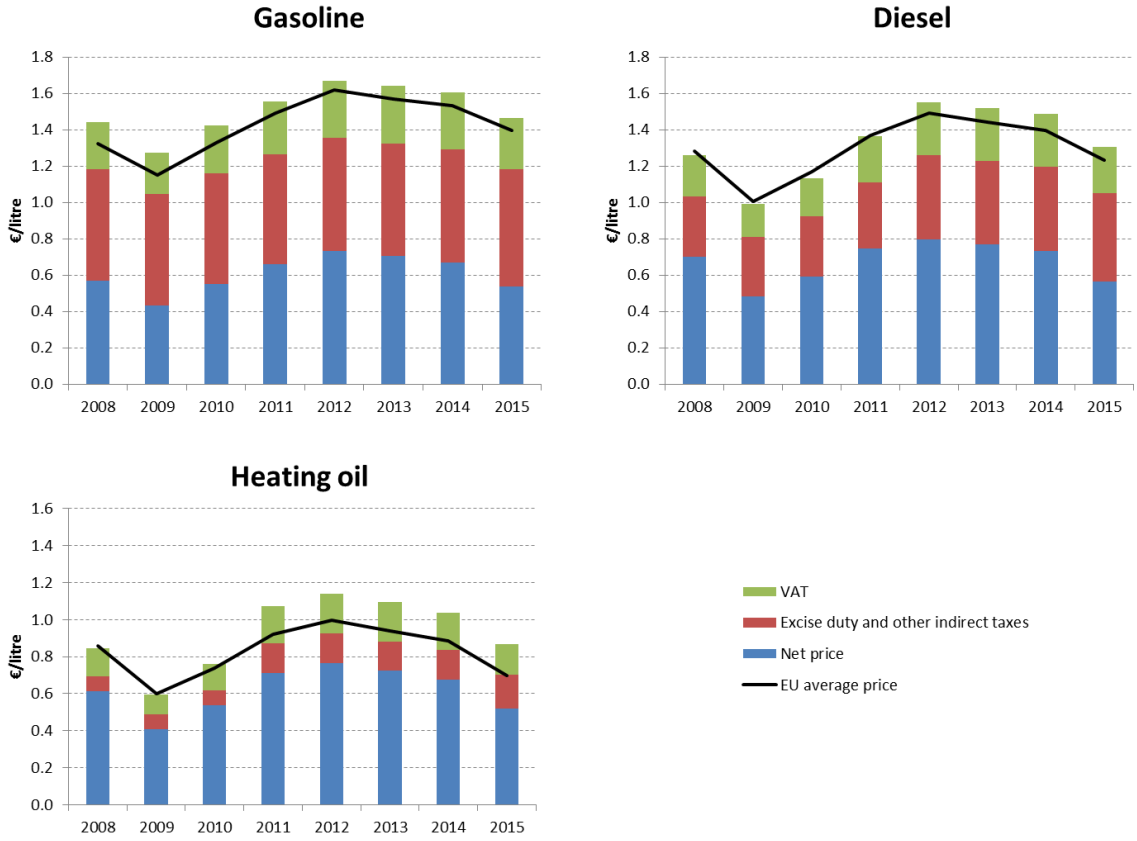




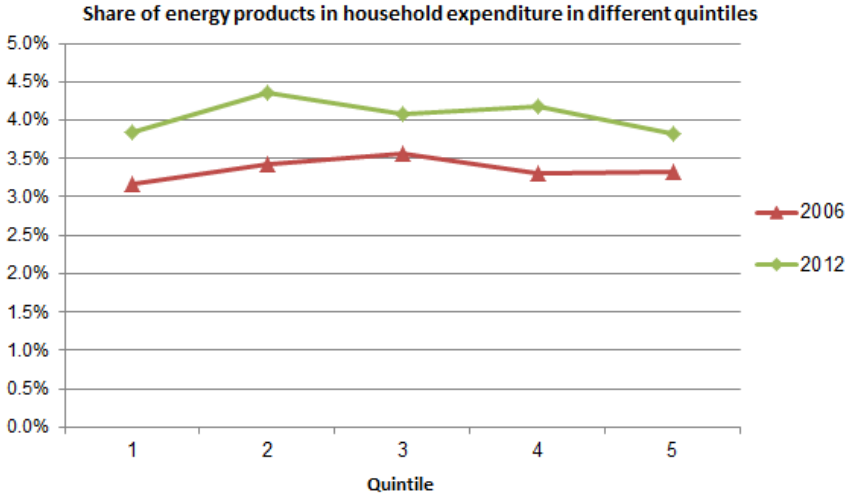
### Composition of gas prices



### Oil products prices

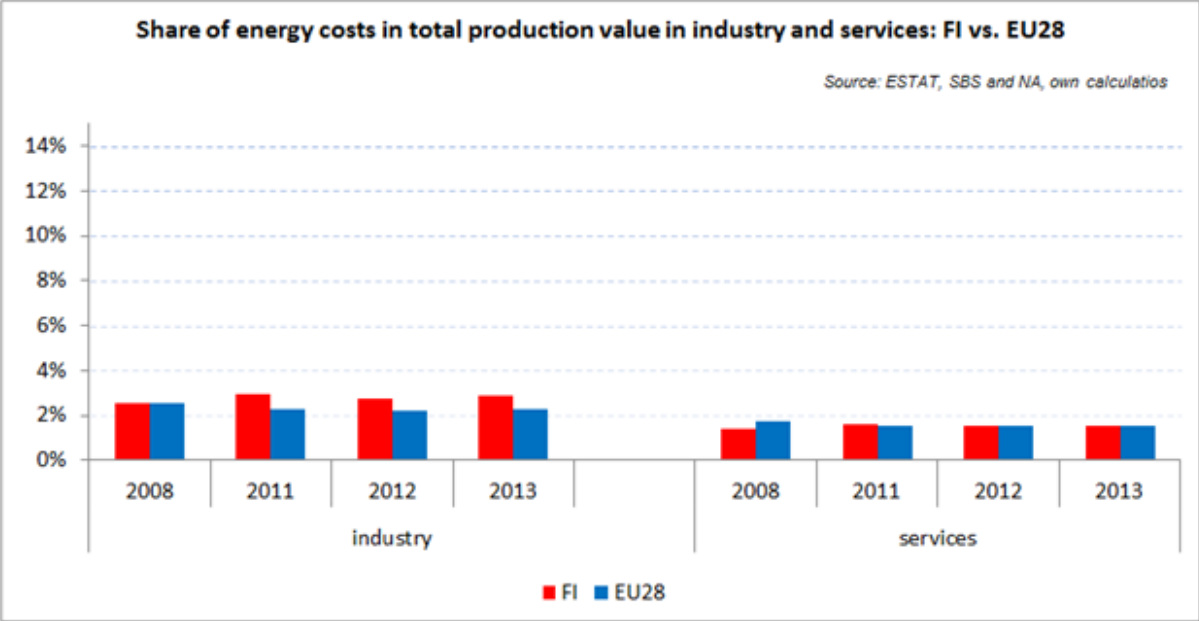


### Energy in Households budgets



Finland has been among the EU countries where household spent the lowest share on energy from their total expenditure. However, between 2006 (red line) and 2012 (green line) the share of energy in the poorest households (Quintile 1) rose from 3.2% to 3.9%, while for the middle income households (Quintile 3) it went up from 3.6% to 4.1%.

### Energy costs shares in total production costs



Notes  
 Data for Malta, Poland, Slovenia (prior to 2012) and Ireland (after 2012) is not available  
 Data for 2009 and 2010 is incomplete and not reported  
 Industry defined as NACE Rev.2 Section C (Manufacturing)  
 Services defined as NACE Rev. 2 Sections G - U

### Electricity and gas prices – Breakdown by price element

<b>Band DC</b>	<b>EUR/kWh 2015</b>
Energy	0.054600
<b>Total energy component</b>	<b>0.054600</b>
Network	0.048000
<b>Total network component</b>	<b>0.048000</b>
Strategic stockpile fees	0.000000
Excise tax, electricity (I class)	0.022400
Supply security fee	0.000100
VAT	0.030000
Excise tax, electricity (II class)	
<b>Total taxes &amp; levies component</b>	<b>0.052500</b>
<b>Total price</b>	<b>0.155100</b>

<b>Band ID</b>	<b>EUR/kWh 2015</b>
Energy	0.043450
<b>Total energy component</b>	<b>0.043450</b>
Network	0.015750
<b>Total network component</b>	<b>0.015750</b>
Strategic stockpile fees	0.000130
Excise tax, electricity (I class)	
Supply security fee	
VAT	0.000000
Excise tax, electricity (II class)	0.006900
<b>Total taxes &amp; levies component</b>	<b>0.007030</b>
<b>Total price</b>	<b>0.066230</b>

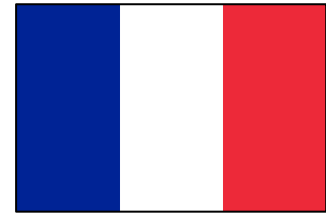
<b>Band D2</b>	<b>EUR/kWh 2015</b>
Energy	
<b>Total energy component</b>	<b>0.000000</b>
Network	

<b>Total network component</b>	<b>0.000000</b>
Excise Tax Strategic stockpile fees Energy content tax Carbon Tax VAT	
<b>Total taxes &amp; levies component</b>	<b>0.000000</b>
<b>Total price</b>	<b>0.000000</b>

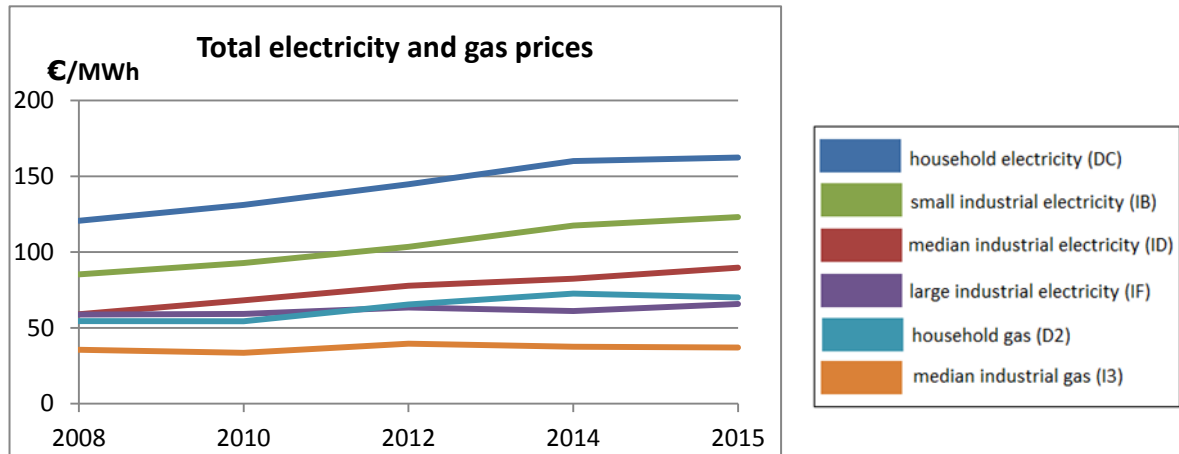
<b>Band I3</b>	<b>EUR/kWh 2015</b>
Energy	0.021600
<b>Total energy component</b>	<b>0.021600</b>
Network	0.009540
<b>Total network component</b>	<b>0.009540</b>
Excise Tax	0.000000
Strategic stockpile fees	0.000756
Energy content tax	0.005985
Carbon Tax	0.007839
VAT	0.000000
<b>Total taxes &amp; levies component</b>	<b>0.014580</b>
<b>Total price</b>	<b>0.045720</b>



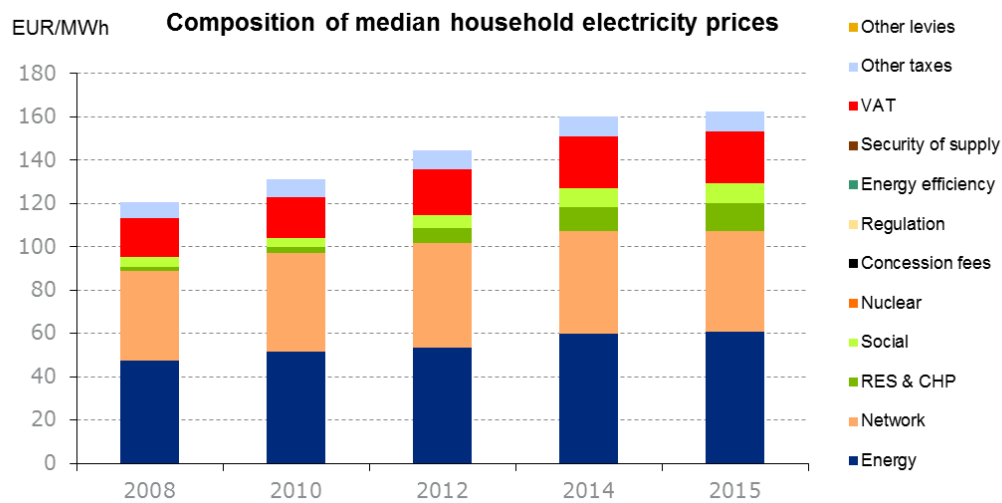
# France

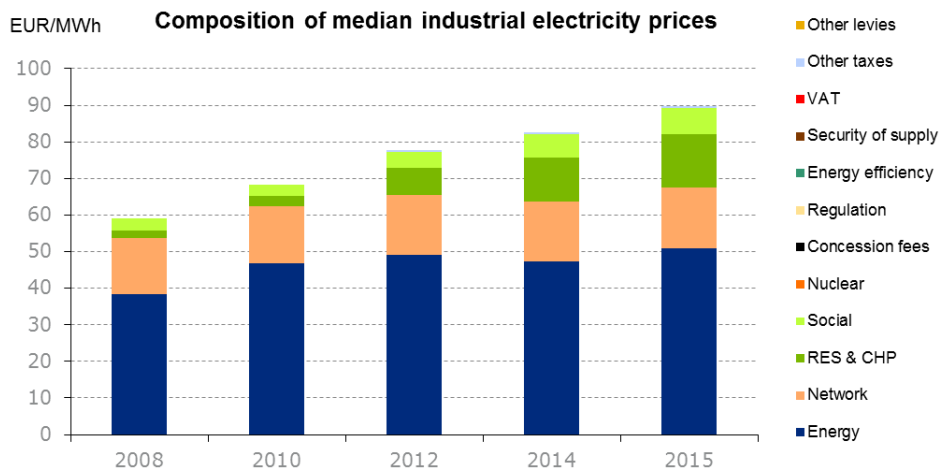


## Evolution of electricity and natural gas prices



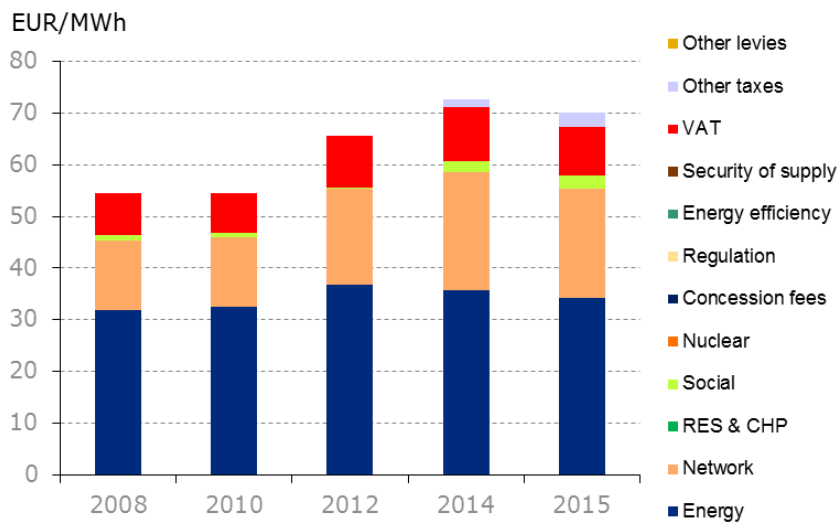
## Composition of electricity prices



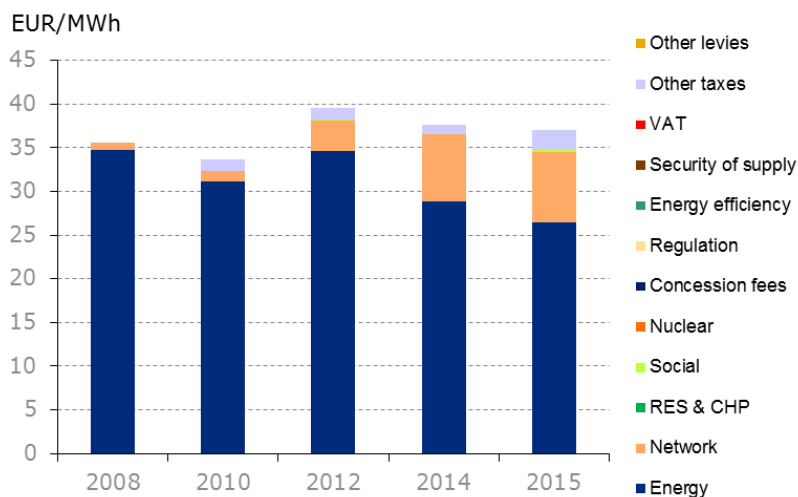


## Composition of gas prices

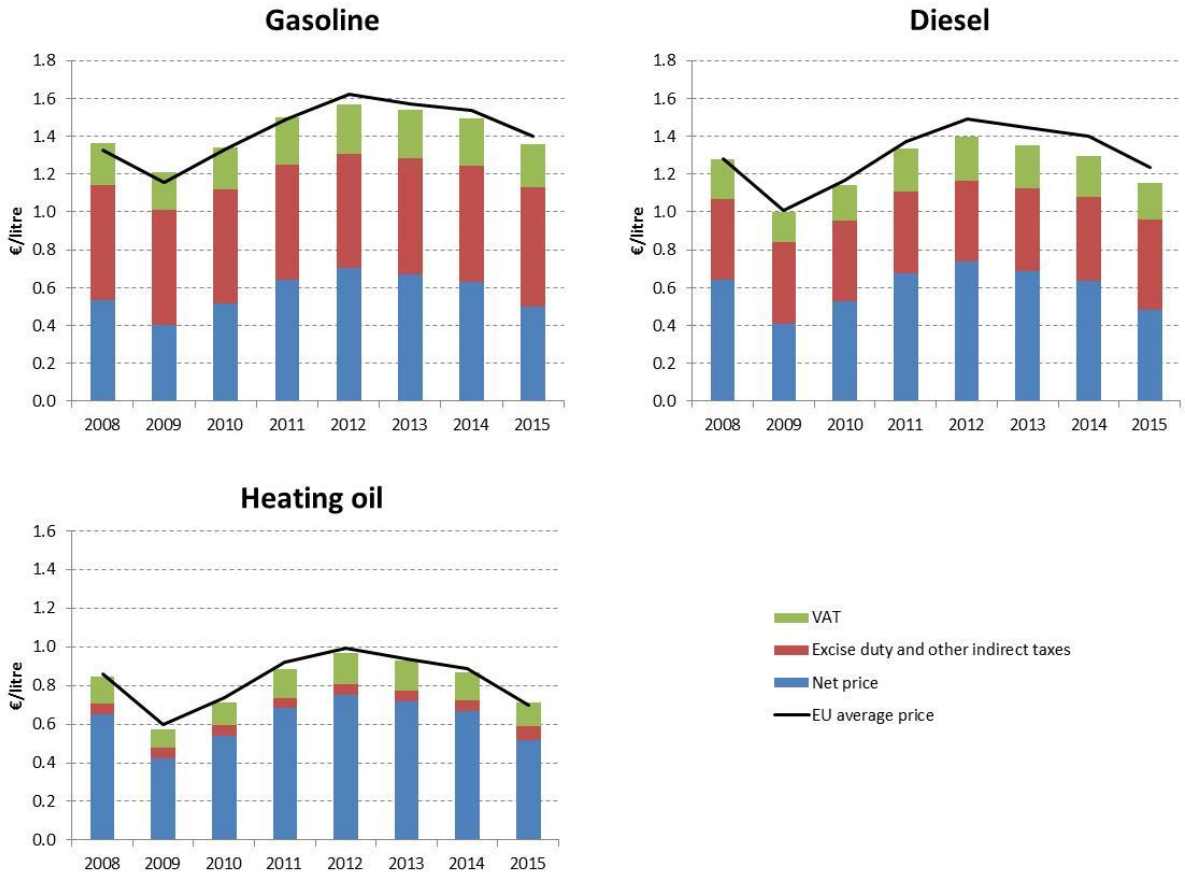
### Composition of median household gas prices



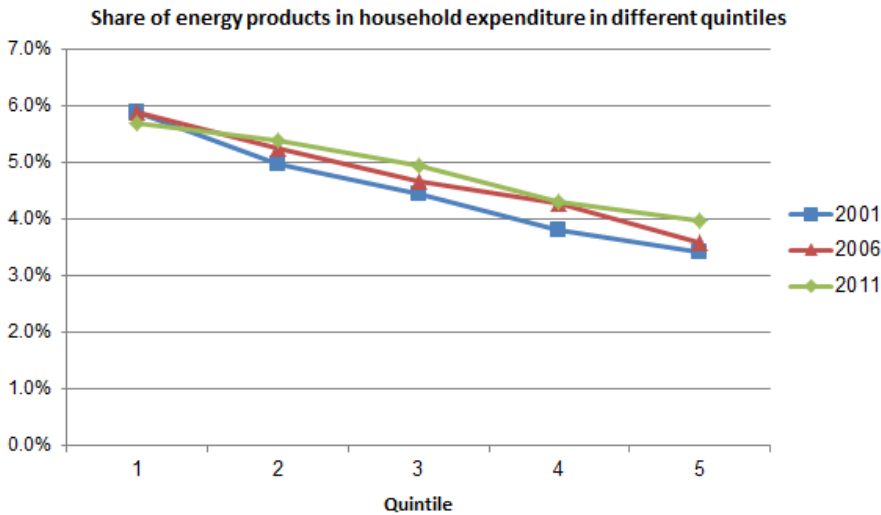
### Composition of median industrial gas prices



### Oil products prices

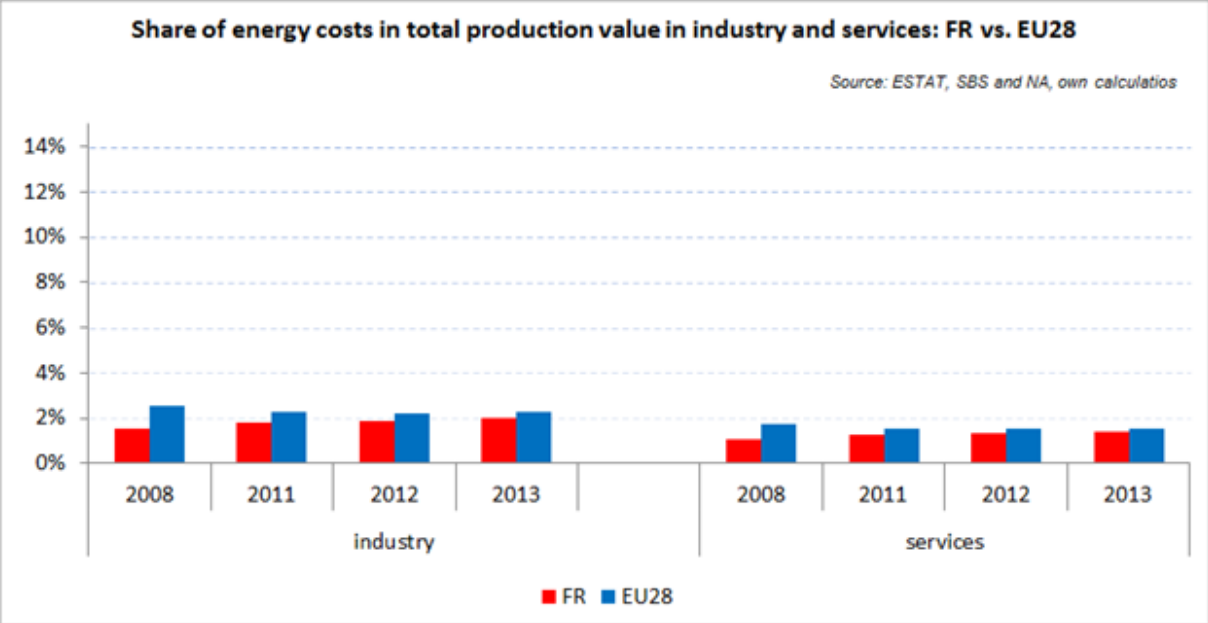


### Energy in Households budgets



In France the share of energy in total household expenditure was quite stable between 2001 (blue line) and 2011 (green line); in the case of the poorest households (Quintile 1) it remained practically unchanged, while for households with middle income (Quintile 3) it increased from 4.4% to 4.9%.

### Energy costs shares in total production costs



Notes  
 Data for Malta, Poland, Slovenia (prior to 2012) and Ireland (after 2012) is not available  
 Data for 2009 and 2010 is incomplete and not reported  
 Industry defined as NACE Rev.2 Section C (Manufacturing)  
 Services defined as NACE Rev. 2 Sections G - U

### Electricity and gas prices – Breakdown by price element

<b>Band DC</b>	<b>EUR/kWh 2015</b>
Supply	0.060910
<b>Total energy component</b>	<b>0.060910</b>
Transmission and distribution	0.046210
<b>Total network component</b>	<b>0.046210</b>
PSO renewable and combined heat generation	0.012920
PSO national tariff equalization	0.004950
Tax on final consumption of electricity	0.009000
PSO vulnerable consumer	0.000470
Transmission and distribution duties	0.003690
VAT	0.024270
<b>Total taxes &amp; levies component</b>	<b>0.055300</b>
<b>Total price</b>	<b>0.162420</b>

<b>Band ID</b>	<b>EUR/kWh 2015</b>
Supply	0.050790
<b>Total energy component</b>	<b>0.050790</b>
Transmission and distribution	0.016840
<b>Total network component</b>	<b>0.016840</b>
PSO renewable and combined heat generation	0.014350
PSO national tariff equalization	0.005500
Tax on final consumption of electricity	0.000520
PSO vulnerable consumer	0.000520
Transmission and distribution duties	0.001250
VAT	0.000000
<b>Total taxes &amp; levies component</b>	<b>0.022140</b>
<b>Total price</b>	<b>0.089770</b>

<b>Band D2</b>	<b>EUR/kWh 2015</b>
Supply	0.031530

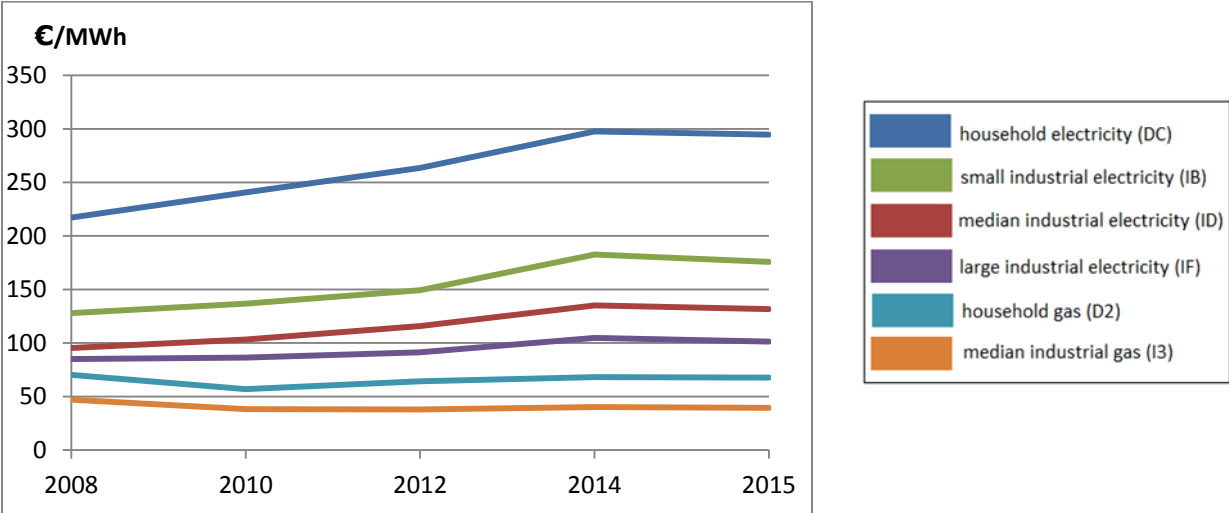
Storage	0.002750
<b>Total energy component</b>	<b>0.034280</b>
Network	0.021120
<b>Total network component</b>	<b>0.021120</b>
Transmission and distribution duties (distribution)	0.002040
VAT	0.009560
Interior tax on consumption of natural gas	0.002650
Transmission and distribution duties (other)	0.000410
<b>Total taxes &amp; levies component</b>	<b>0.014660</b>
<b>Total price</b>	<b>0.070060</b>

<b>Band I3</b>	<b>EUR/kWh 2015</b>
Supply	0.024650
Storage	0.001810
<b>Total energy component</b>	<b>0.026460</b>
Network	0.008040
<b>Total network component</b>	<b>0.008040</b>
Transmission and distribution duties (distribution)	0.000160
VAT	0.000000
Interior tax on consumption of natural gas	0.002330
Transmission and distribution duties (other)	0.000030
<b>Total taxes &amp; levies component</b>	<b>0.002520</b>
<b>Total price</b>	<b>0.037020</b>

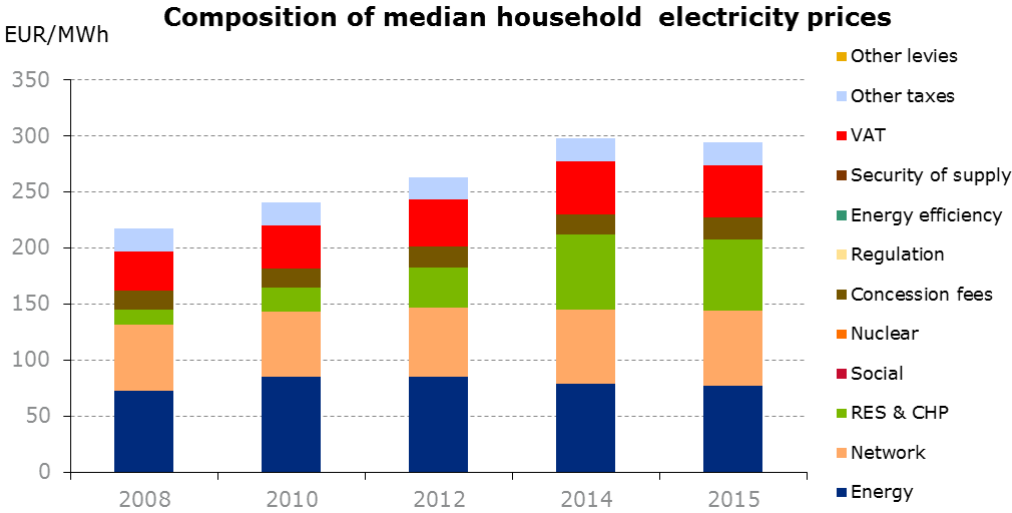
# Germany

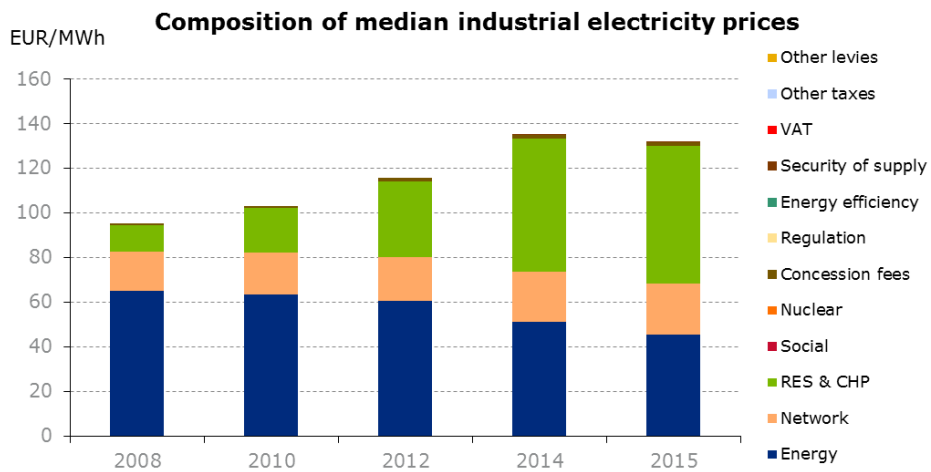


## Evolution of electricity and natural gas prices



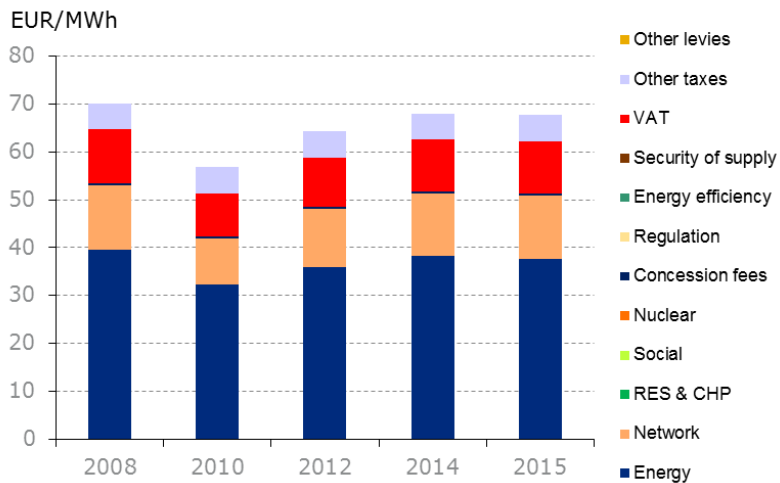
## Composition of electricity prices



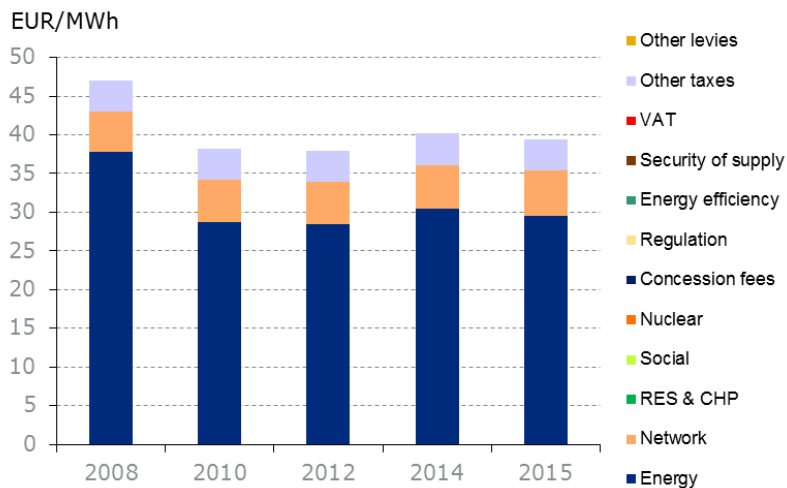


## Composition of gas prices

### Composition of median household gas prices

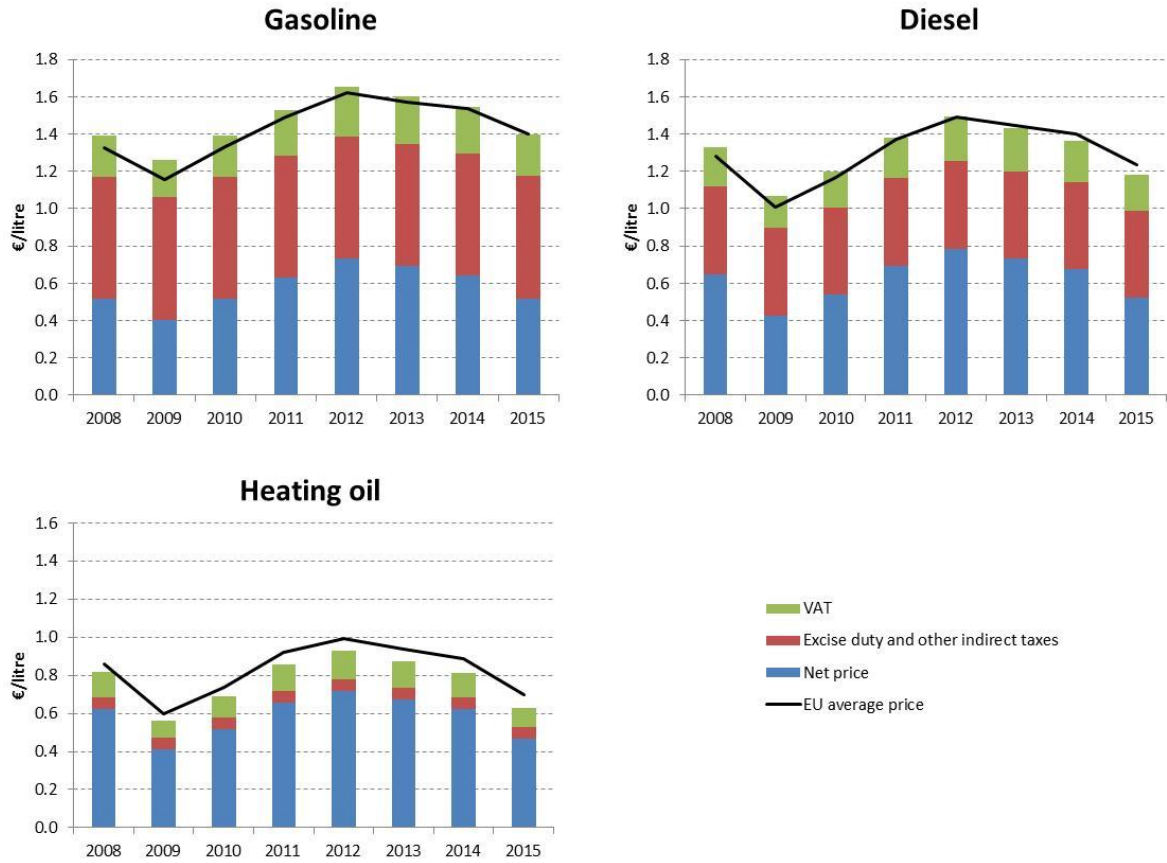


### Composition of median industrial gas prices

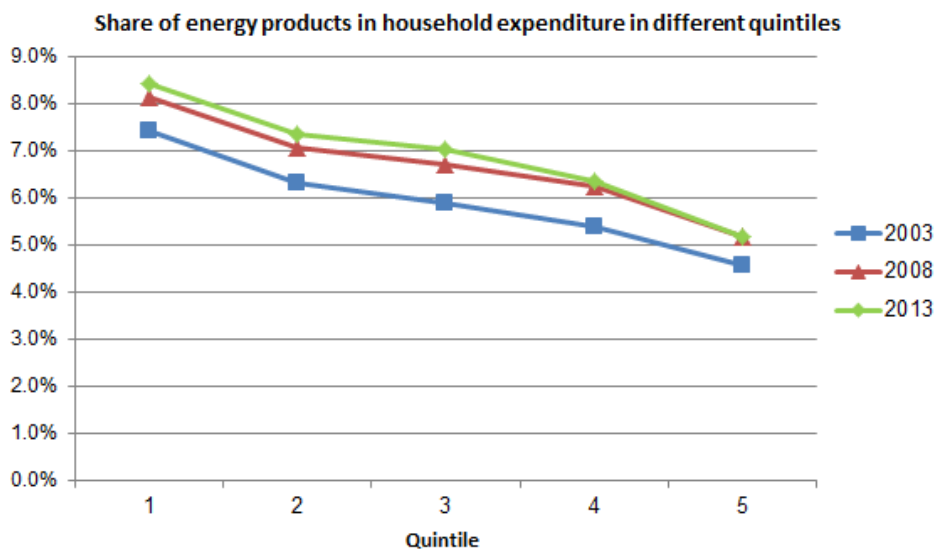




## Oil products prices

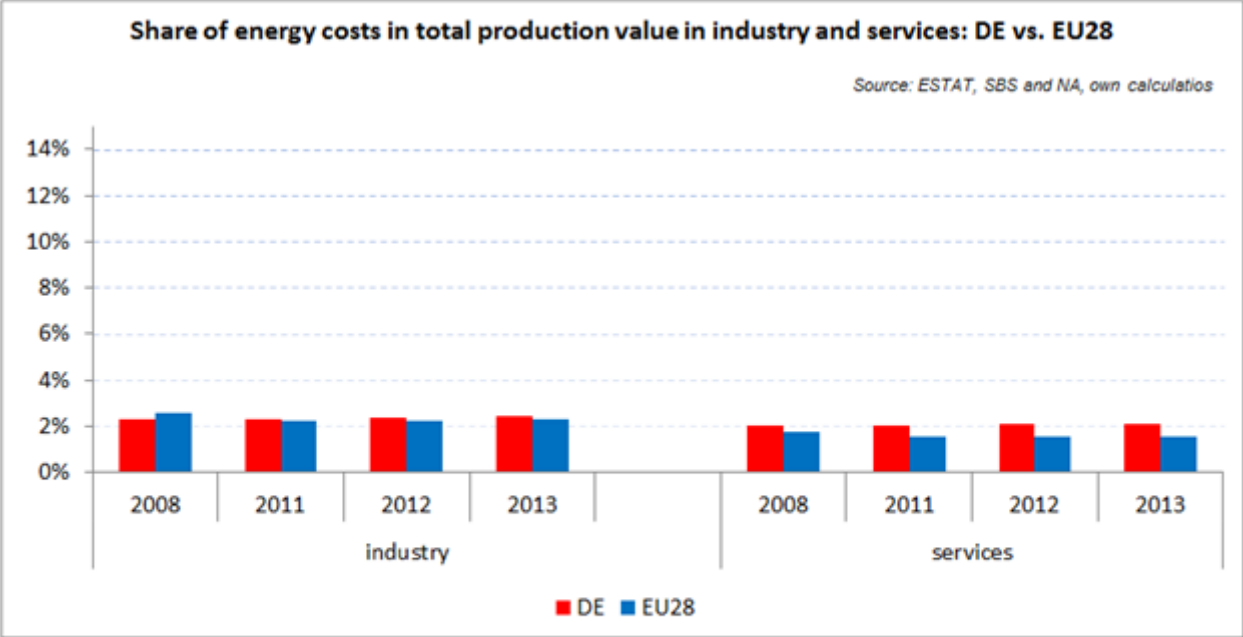


## Energy in Households budgets



In Germany the share of energy in the total household expenditure rose from 7.4% to 8.4% in the case of the poorest households (Quintile 1) between 2003 (blue line) and 2013 (green line), while in the case of middle income households (Quintile 3) the energy share went up from 5.9% to 7% in the same period.

**Energy costs shares in total production costs**



Notes  
 Data for Malta, Poland, Slovenia (prior to 2012) and Ireland (after 2012) is not available  
 Data for 2009 and 2010 is incomplete and not reported  
 Industry defined as NACE Rev.2 Section C (Manufacturing)  
 Services defined as NACE Rev. 2 Sections G - U

### Electricity and gas prices – Breakdown by price element

<b>Band DC</b>	<b>EUR/kWh 2015</b>
Energy and supply	0.076800
<b>Total energy component</b>	<b>0.076800</b>
Grid fee incl. Metering and Metering Services	
Grid fee	0.061300
Metering, Metering Services	0.006200
<b>Total network component</b>	<b>0.067500</b>
Levy for financing interruptible loads	0.000060
VAT	0.047000
Concession Fee	0.016600
Support for combined heat and power (CHP)	0.002540
Electricity Tax	0.020500
Levy to finance reduced grid fees	0.002370
Renewable Energy Levy	0.061700
Levy for liability of risk at offshore wind	-0.000510
<b>Total taxes &amp; levies component</b>	<b>0.150260</b>
<b>Total price</b>	<b>0.294560</b>

<b>Band ID</b>	<b>EUR/kWh 2015</b>
Energy and supply	0.045500
<b>Total energy component</b>	<b>0.045500</b>
Grid fee incl. Metering and Metering Services	0.023000
Grid fee	
Metering, Metering Services	
<b>Total network component</b>	<b>0.023000</b>
Levy for financing interruptible loads	0.000060
VAT	0.000000
Concession Fee	0.000990
Support for combined heat and power (CHP)	0.000520
Electricity Tax	0.000000
Levy to finance reduced grid fees	0.000650
Renewable Energy Levy	0.060500
Levy for liability of risk at offshore wind	0.000400
<b>Total taxes &amp; levies component</b>	<b>0.063120</b>

<b>Total price</b>	<b>0.131620</b>
--------------------	-----------------

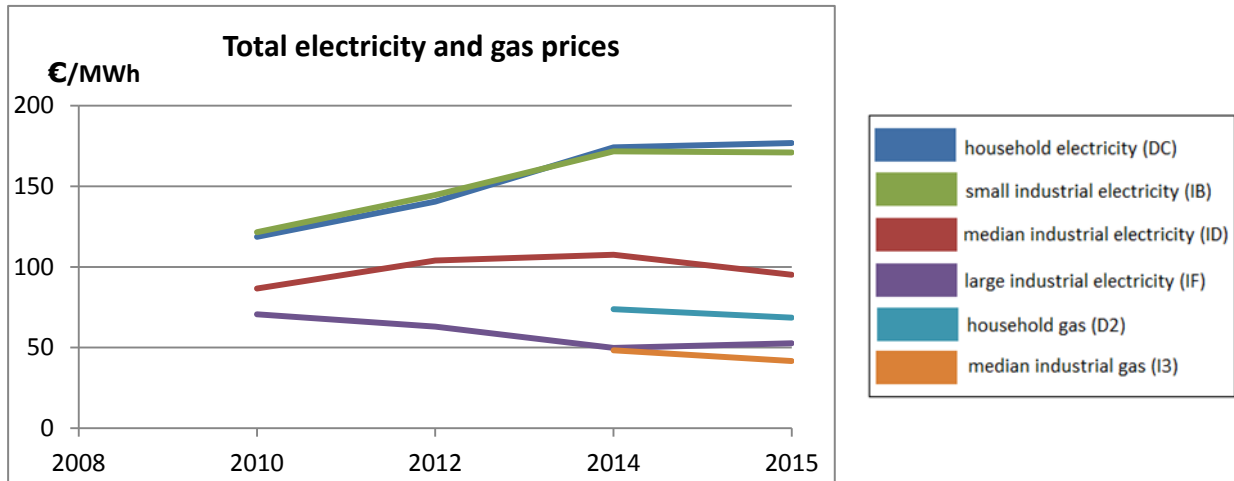
<b>Band D2</b>	<b>EUR/kWh 2015</b>
Energy and supply	0.037700
<b>Total energy component</b>	<b>0.037700</b>
Grid fee incl. Metering	0.013200
<b>Total network component</b>	<b>0.013200</b>
Natural Gas Tax	0.005500
VAT	0.010800
Concession Fee	0.000450
<b>Total taxes &amp; levies component</b>	<b>0.016750</b>
<b>Total price</b>	<b>0.067650</b>

<b>Band I3</b>	<b>EUR/kWh 2015</b>
Energy and supply	0.029500
<b>Total energy component</b>	<b>0.029500</b>
Grid fee incl. Metering	0.005900
<b>Total network component</b>	<b>0.005900</b>
Natural Gas Tax	0.004040
VAT	0.000000
<b>Total taxes &amp; levies component</b>	<b>0.004040</b>
<b>Total price</b>	<b>0.039440</b>

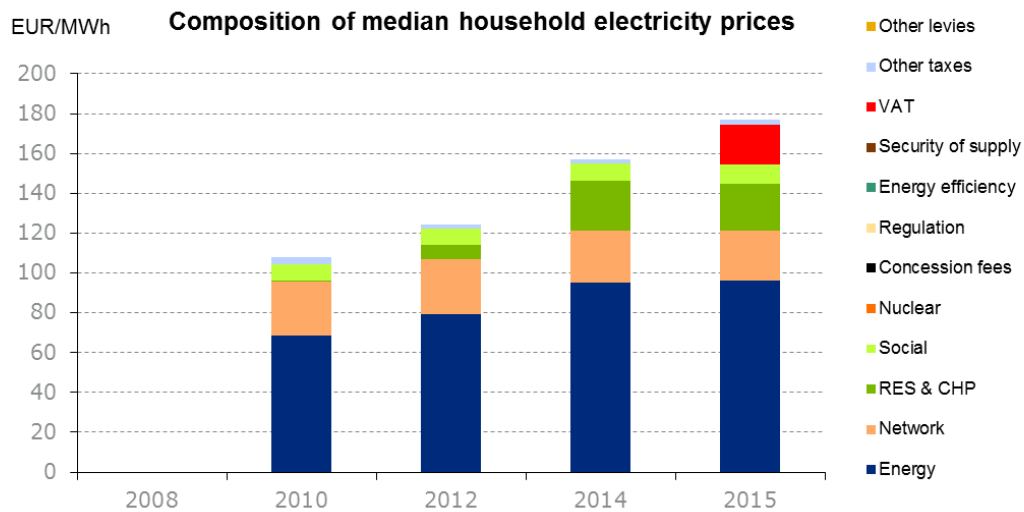
# Greece

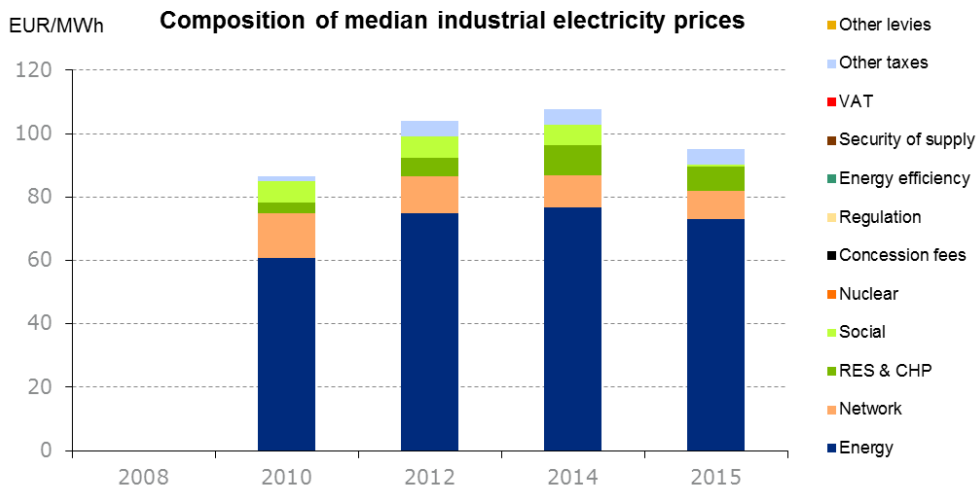


## Evolution of electricity and natural gas prices



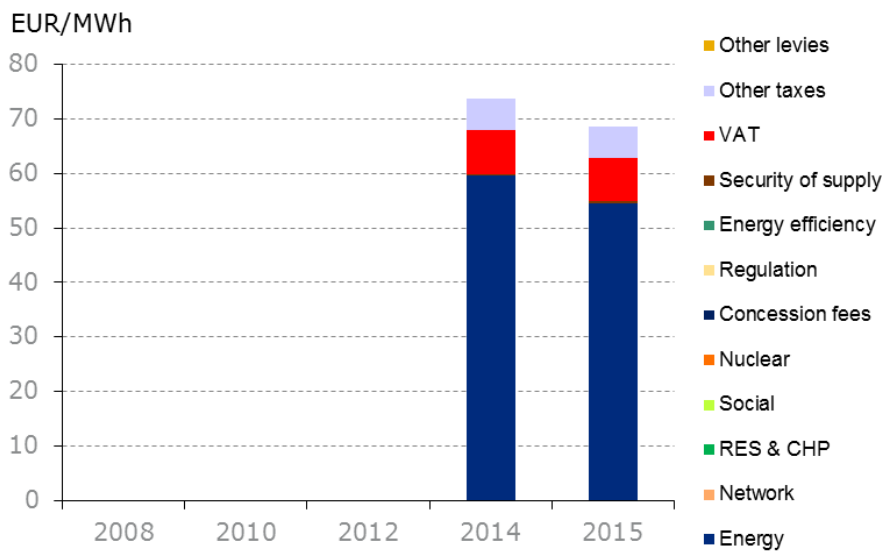
## Composition of electricity prices





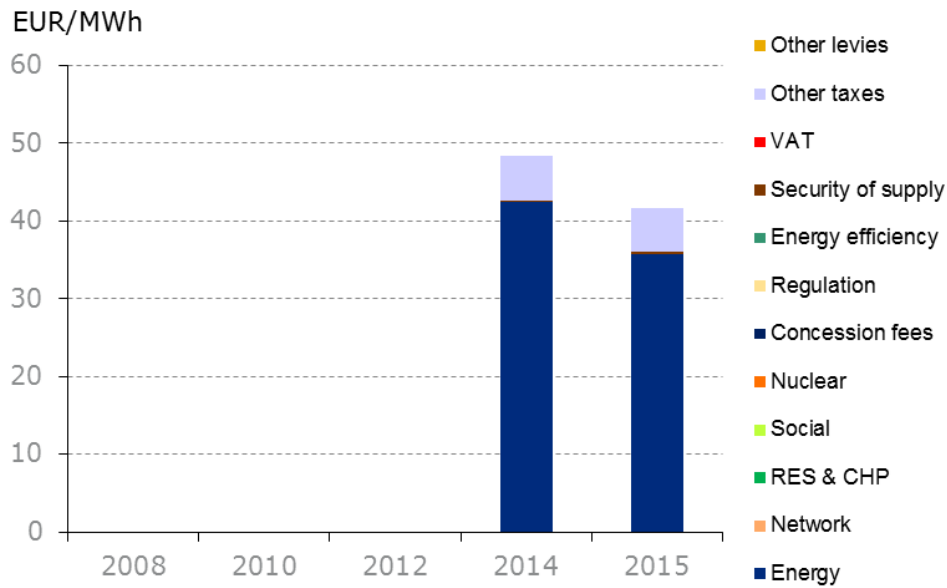
### Composition of gas prices<sup>1</sup>

**Composition of median household gas prices**

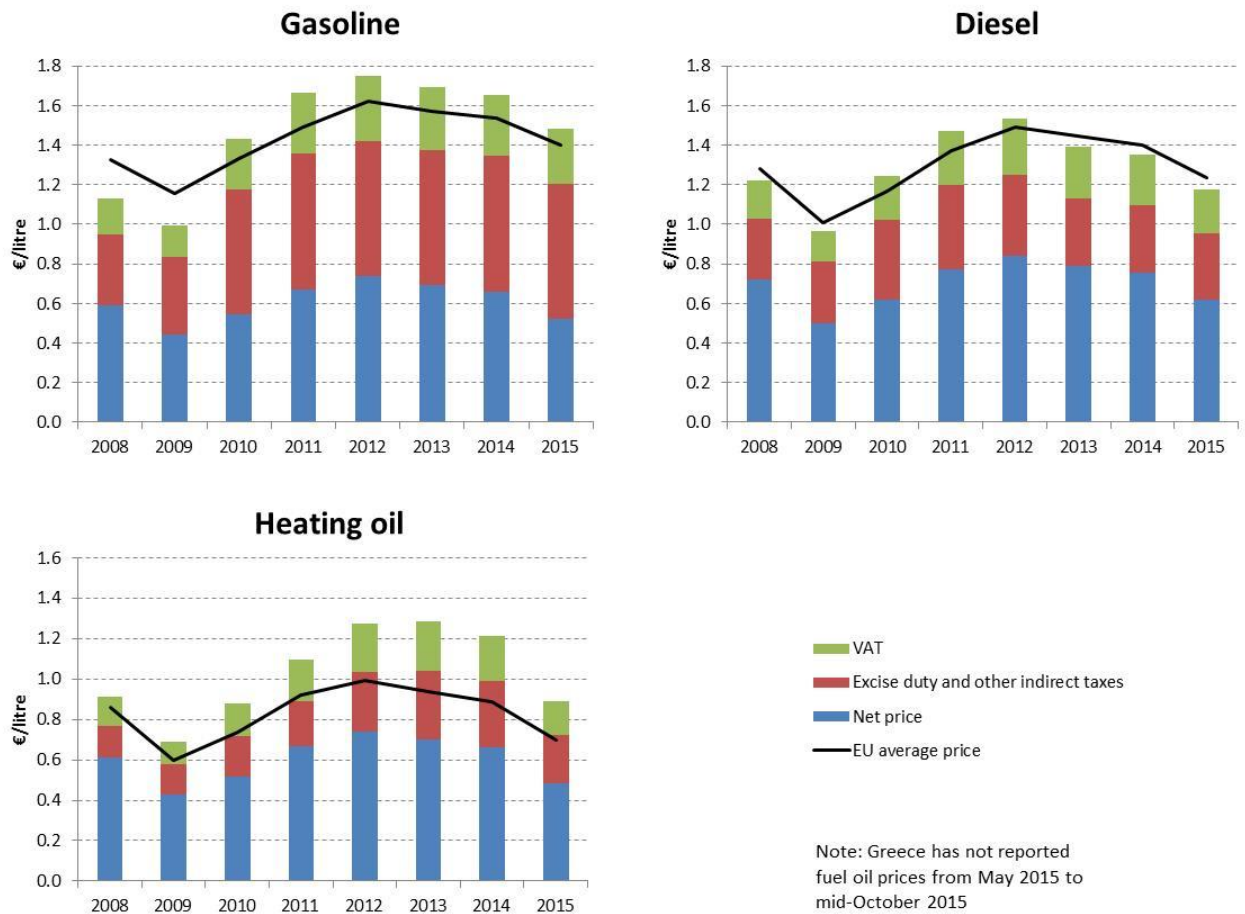


<sup>1</sup> Combined energy and network component both for household and industrial data

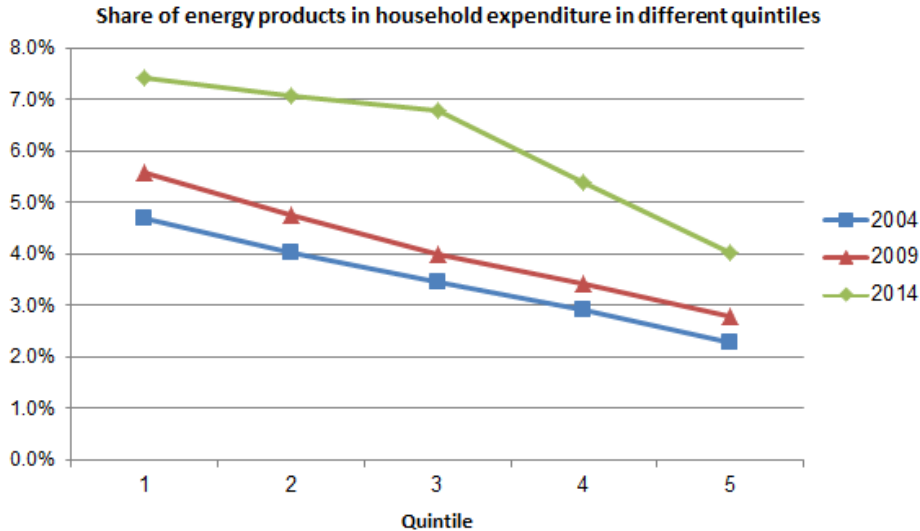
## Composition of median industrial gas prices



## Oil products prices

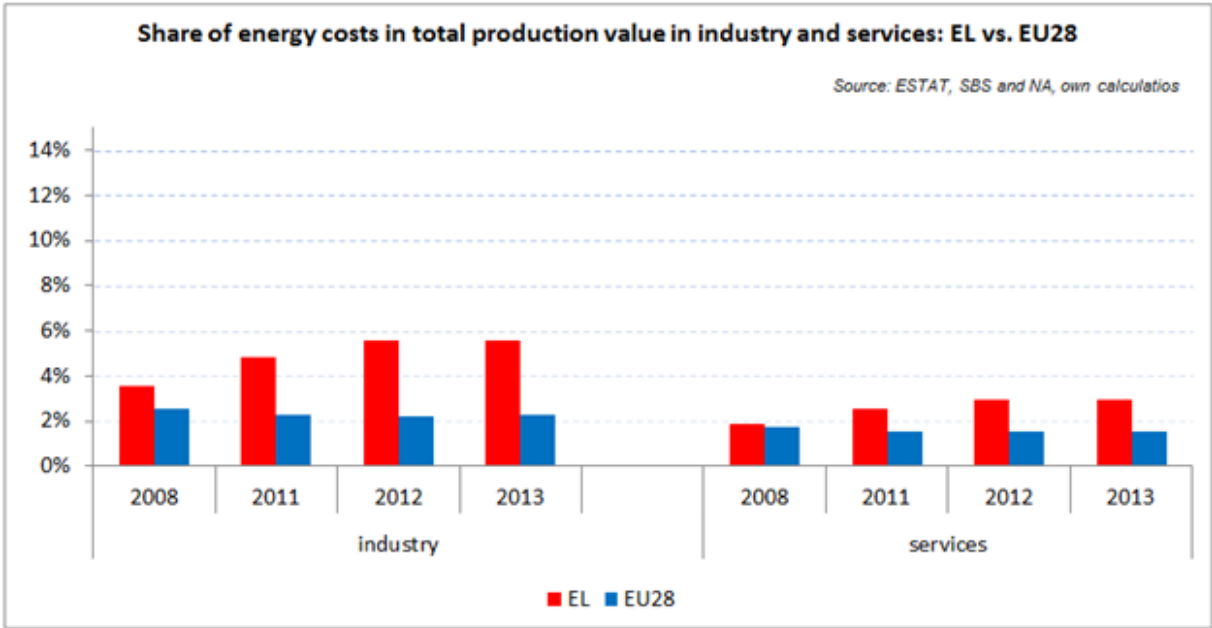


### Energy in Households budgets



Even between 2004 (blue line) and 2009 (red line) the share of energy in the total expenditure of Greek households showed a measurable increase, however, by 2014 (green line) the energy share in the case of the poorest households (Quintile 1) went up from 4.7% to 7.4% compared to 2004. In the case of households with middle income (Quintile 3) the energy share doubled from 3.4% to 6.8% between 2004 and 2014.

### Energy costs shares in total production costs



Notes  
 Data for Malta, Poland, Slovenia (prior to 2012) and Ireland (after 2012) is not available  
 Data for 2009 and 2010 is incomplete and not reported  
 Industry defined as NACE Rev.2 Section C (Manufacturing)  
 Services defined as NACE Rev. 2 Sections G - U



## Electricity and gas prices – Breakdown by price element

<b>Band DC</b>	<b>EUR/kWh 2015</b>
Supply Charges	0.096200
<b>Total energy component</b>	<b>0.096200</b>
Network	0.024900
<b>Total network component</b>	<b>0.024900</b>
Public Service Obligation (PSO) - Island compensation	0.009024
Public Service Obligation (PSO) - Vulnerable consumers	0.000576
Energy Tax	0.002200
VAT	0.020300
Levy for Renewable Energy Source(RES)	0.023600
<b>Total taxes &amp; levies component</b>	<b>0.055700</b>
<b>Total price</b>	<b>0.176800</b>

<b>Band ID</b>	<b>EUR/kWh 2015</b>
Supply Charges	0.073100
<b>Total energy component</b>	<b>0.073100</b>
Network	0.008900
<b>Total network component</b>	<b>0.008900</b>
Public Service Obligation (PSO) - Island compensation	0.000564
Public Service Obligation (PSO) - Vulnerable consumers	0.000036
Energy Tax	0.005000
VAT	0.000000
Levy for Renewable Energy Source(RES)	0.007500
<b>Total taxes &amp; levies component</b>	<b>0.013100</b>
<b>Total price</b>	<b>0.095100</b>

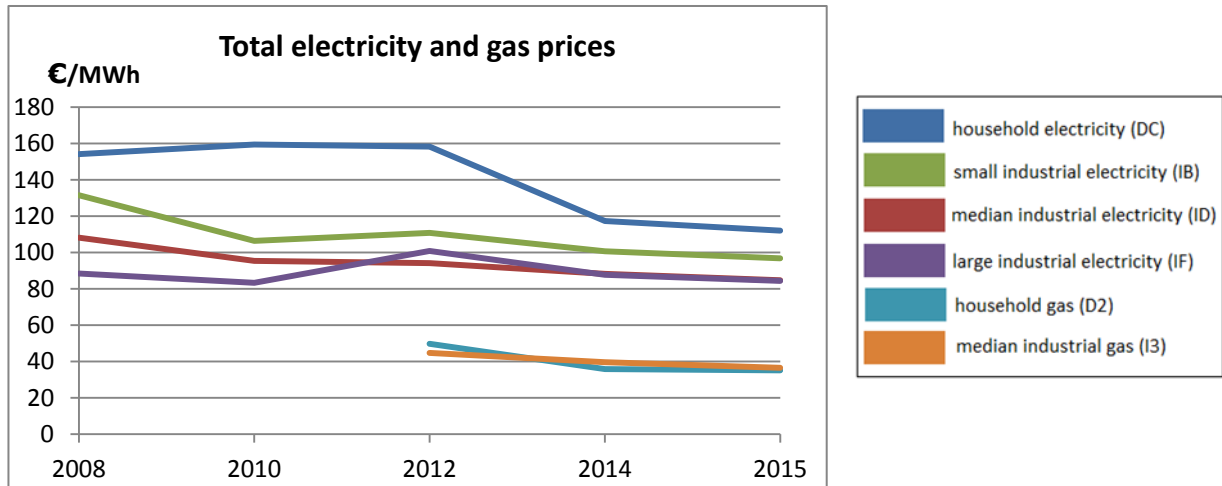
<b>Band D2</b>	<b>EUR/kWh 2015</b>
Energy Charge + Capacity Charge	0.054480
<b>Total energy component</b>	<b>0.054480</b>
<b>Total network component</b>	<b>0.000000</b>
VAT	0.007850
Security of Supply Fee	0.000480
Excise Tax	0.005400
Customs Tax	0.000300
<b>Total taxes &amp; levies component</b>	<b>0.014030</b>
<b>Total price</b>	<b>0.068510</b>

<b>Band I3</b>	<b>EUR/kWh 2015</b>
Energy Charge + Capacity Charge + RAE Levy	0.035770
<b>Total energy component</b>	<b>0.035770</b>
<b>Total network component</b>	<b>0.000000</b>
VAT	0.000000
Security of Supply Fee	0.000220
Excise Tax	0.005400
Customs Tax	0.000210
<b>Total taxes &amp; levies component</b>	<b>0.005830</b>
<b>Total price</b>	<b>0.041600</b>

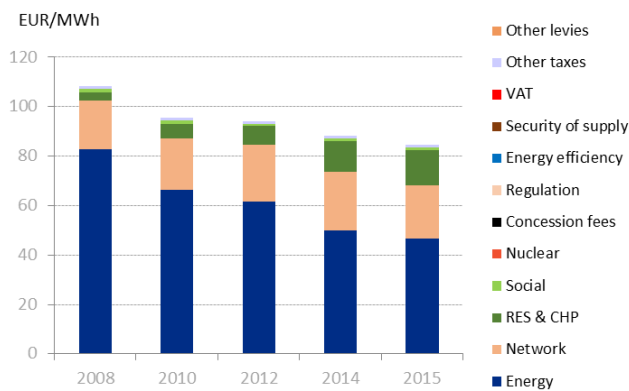
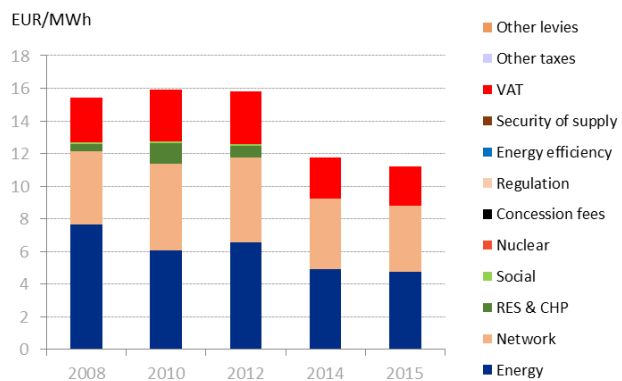
# Hungary



## Evolution of electricity and natural gas prices

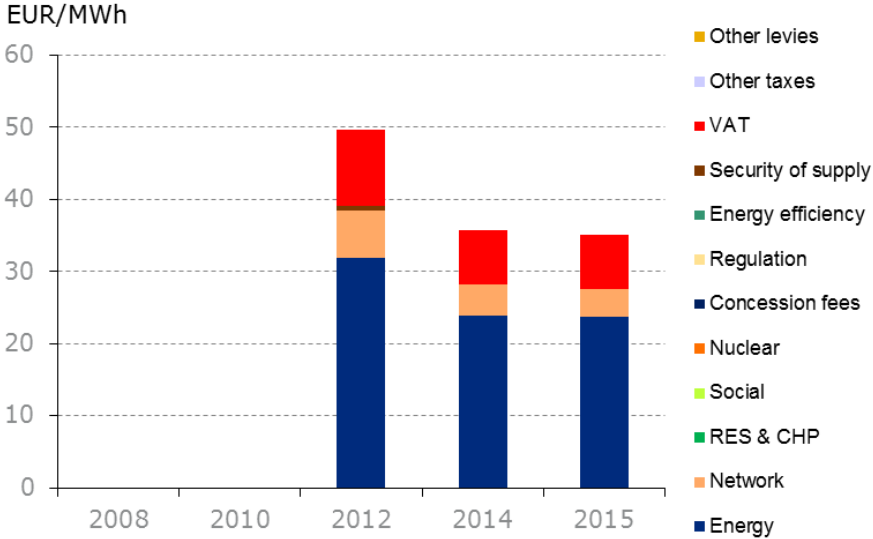


## Composition of electricity prices

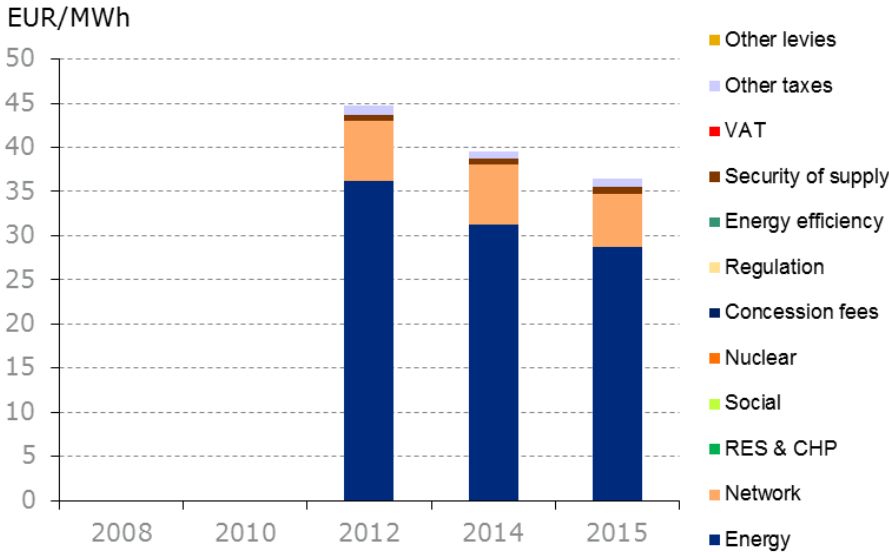


# Composition of gas prices

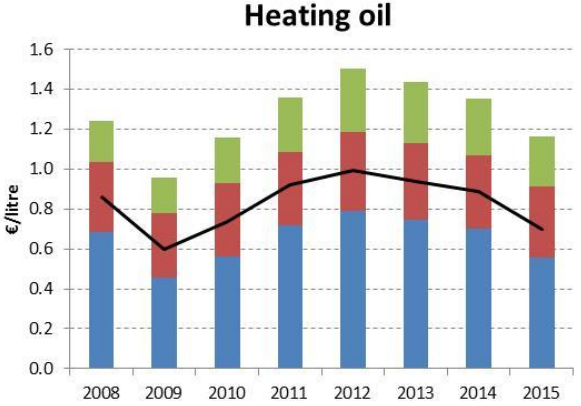
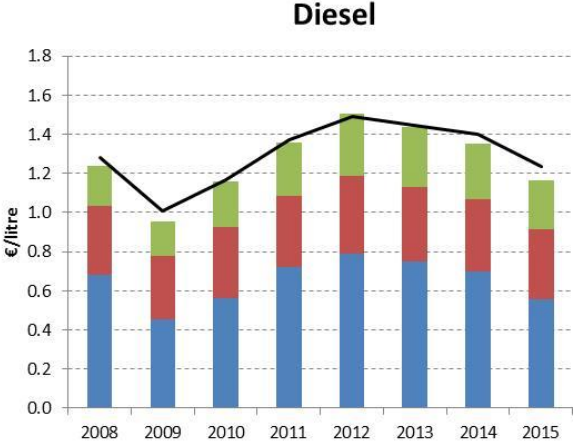
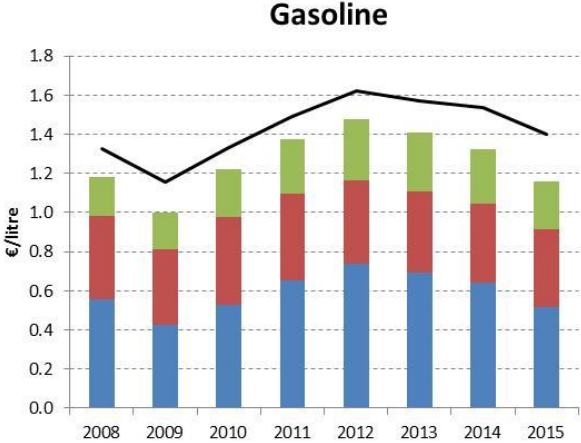
## Composition of median household gas prices



## Composition of median industrial gas prices

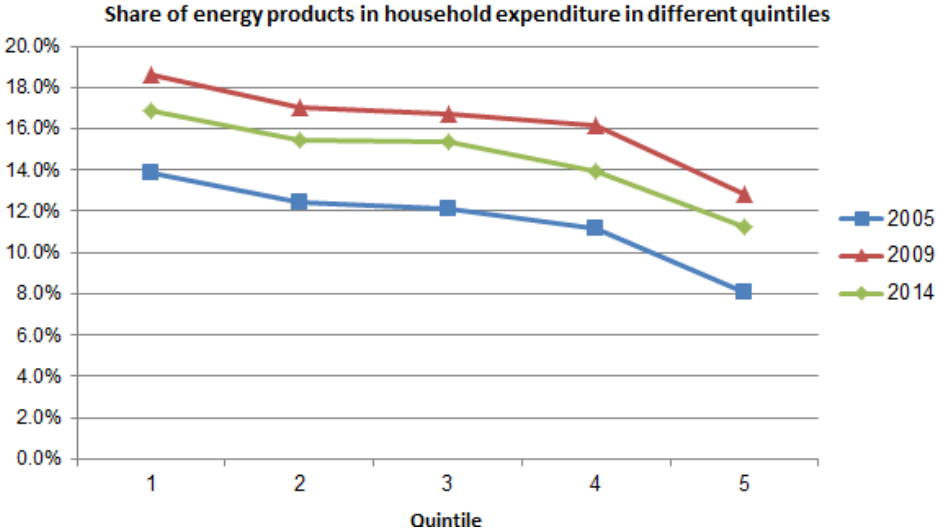


# Oil products prices



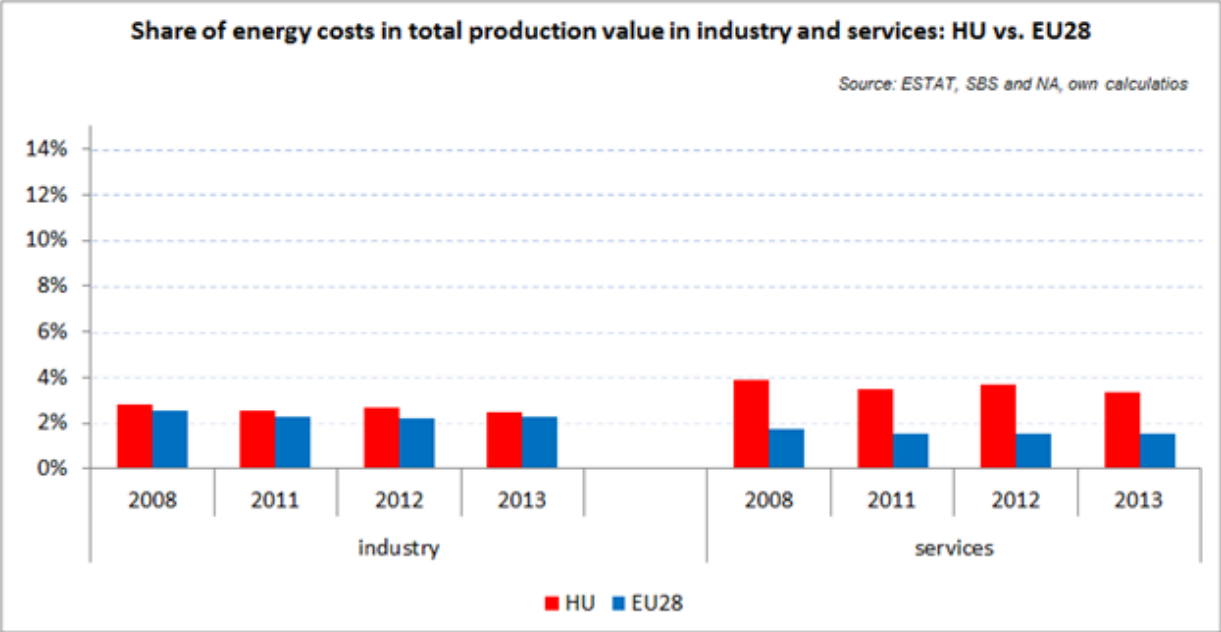
- VAT
- Excise duty and other indirect taxes
- Net price
- EU average price

### Energy in Households budgets



In Hungary the share of energy within the total household expenditure rose significantly between 2005 (blue line) and 2009 (red line) in the case of both households with low income (Quintile 1 – from 13.9% to 18.6%) and middle income (Quintile 3 - from 12.1% to 16.7%).By 2014 (green line) the share of energy went down 1.3% in both quintiles compared to 2009.

### Energy costs shares in total production costs



Notes  
 Data for Malta, Poland, Slovenia (prior to 2012) and Ireland (after 2012) is not available  
 Data for 2009 and 2010 is incomplete and not reported  
 Industry defined as NACE Rev.2 Section C (Manufacturing)  
 Services defined as NACE Rev. 2 Sections G - U

## Electricity and gas prices – Breakdown by price element

<b>Band DC</b>	<b>EUR/kWh 2015</b>
Energy	0.047256
<b>Total energy component</b>	<b>0.047256</b>
Network	0.040892
<b>Total network component</b>	<b>0.040892</b>
RES support	0.000000
Financial support for employment in the electricity industry	0.000000
Financial support for restructuring cogeneration	0.000000
Financial support for restructuring the coal industry	0.000000
VAT	0.023805
<b>Total taxes &amp; levies component</b>	<b>0.023805</b>
<b>Total price</b>	<b>0.111954</b>

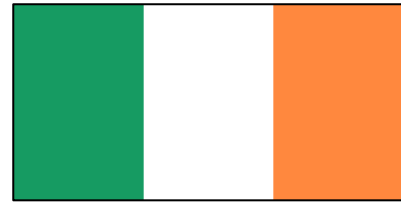
<b>Band ID</b>	<b>EUR/kWh 2015</b>
Energy	0.046779
<b>Total energy component</b>	<b>0.046779</b>
Network	0.021480
<b>Total network component</b>	<b>0.021480</b>
RES support	0.007583
Financial support for employment in the electricity industry	0.000420
Financial support for restructuring cogeneration	0.006719
Financial support for restructuring the coal industry	0.000678
VAT	0.000000
Energy tax	0.001003
<b>Total taxes &amp; levies component</b>	<b>0.016403</b>
<b>Total price</b>	<b>0.084661</b>

<b>Band D2</b>	<b>EUR/kWh 2015</b>
Energy	0.023792
<b>Total energy component</b>	<b>0.023792</b>
Network	0.003813
<b>Total network component</b>	<b>0.003813</b>
VAT	0.007452
Strategic storage stockpiling fee	0.000000
<b>Total taxes &amp; levies component</b>	<b>0.007452</b>
<b>Total price</b>	<b>0.035057</b>

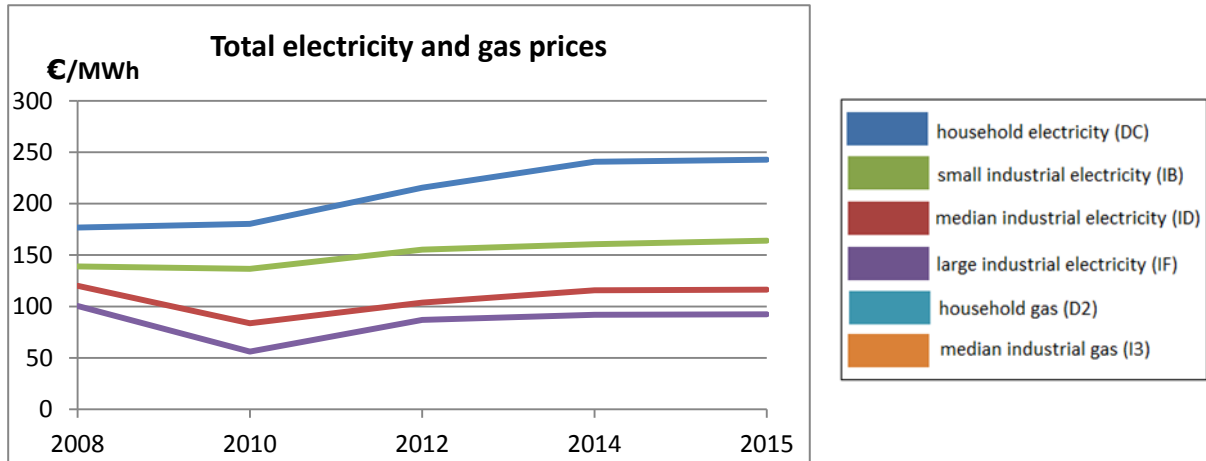
<b>Band I3</b>	<b>EUR/kWh 2015</b>
Energy	0.028710
<b>Total energy component</b>	<b>0.028710</b>
Network	0.006029
<b>Total network component</b>	<b>0.006029</b>
VAT	0.000000
Energy Tax	0.001030
Strategic storage stockpiling free	0.000718
Other price elements, not regulated by law	0.000007
<b>Total taxes &amp; levies component</b>	<b>0.001755</b>
<b>Total price</b>	<b>0.036494</b>



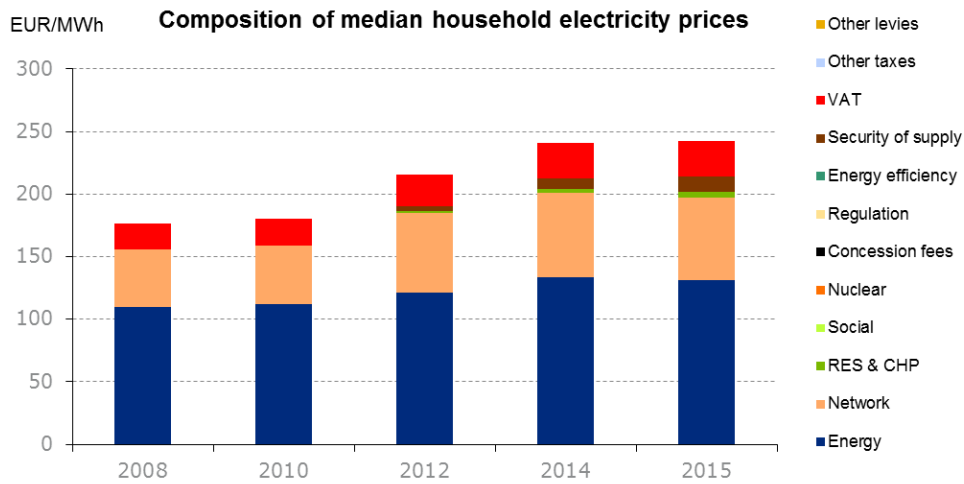
# Ireland

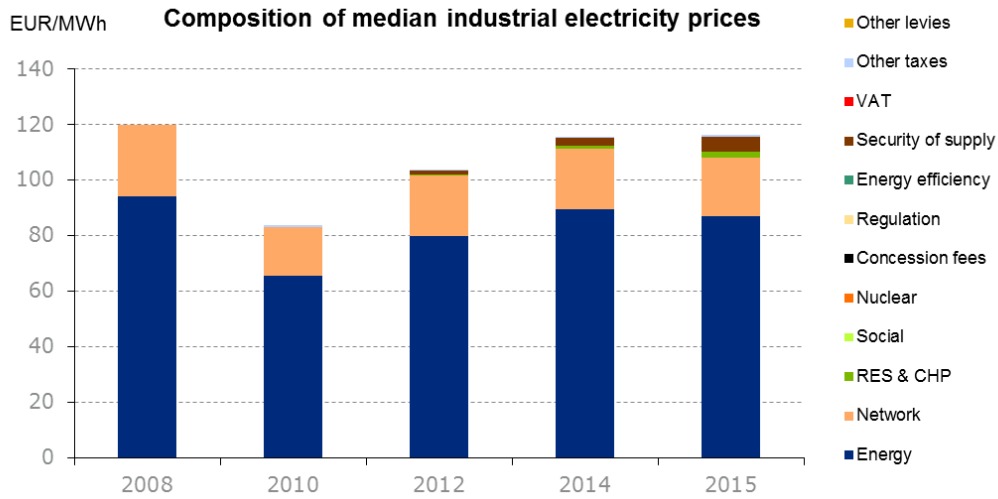


## Evolution of electricity and natural gas prices

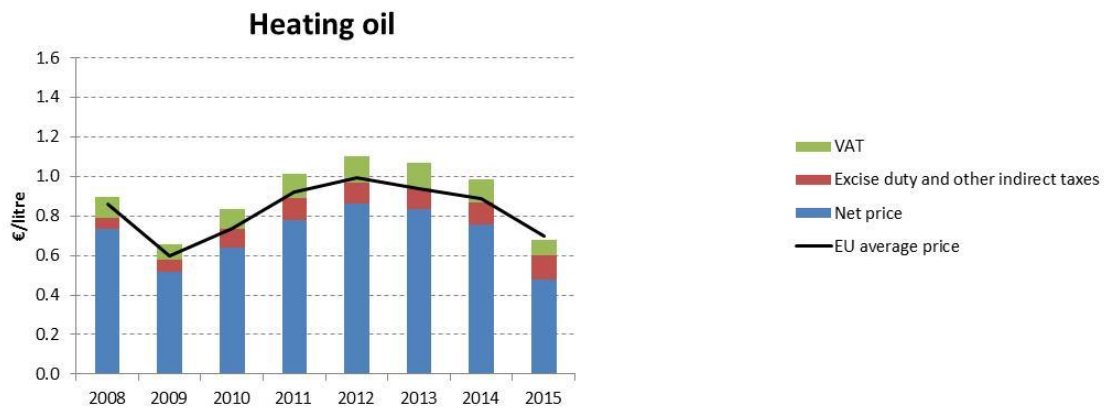
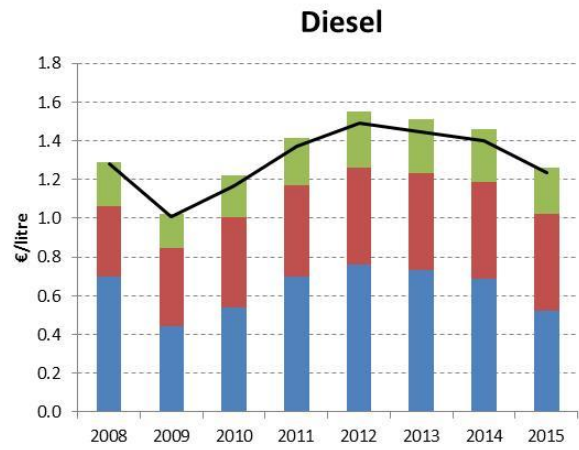
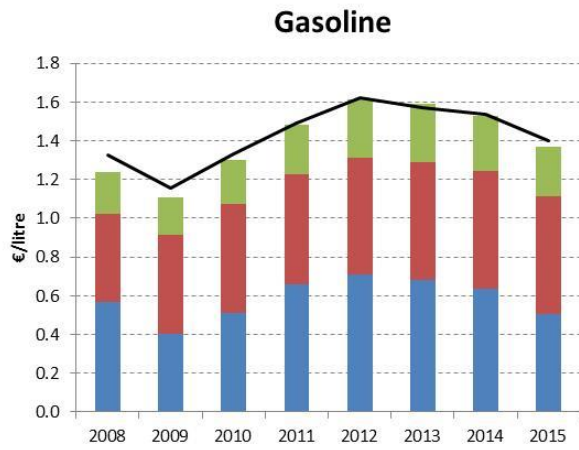


## Composition of electricity prices

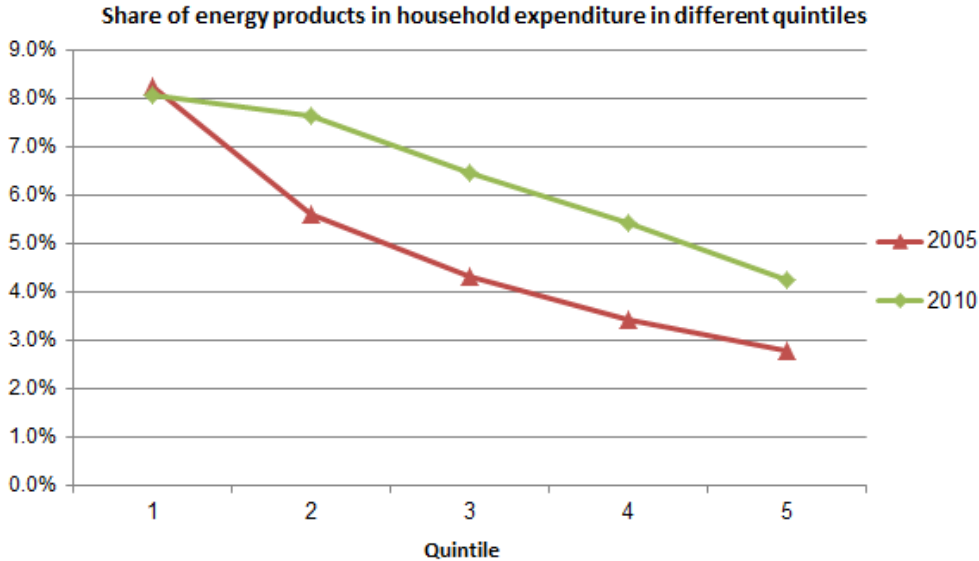




## Oil products prices

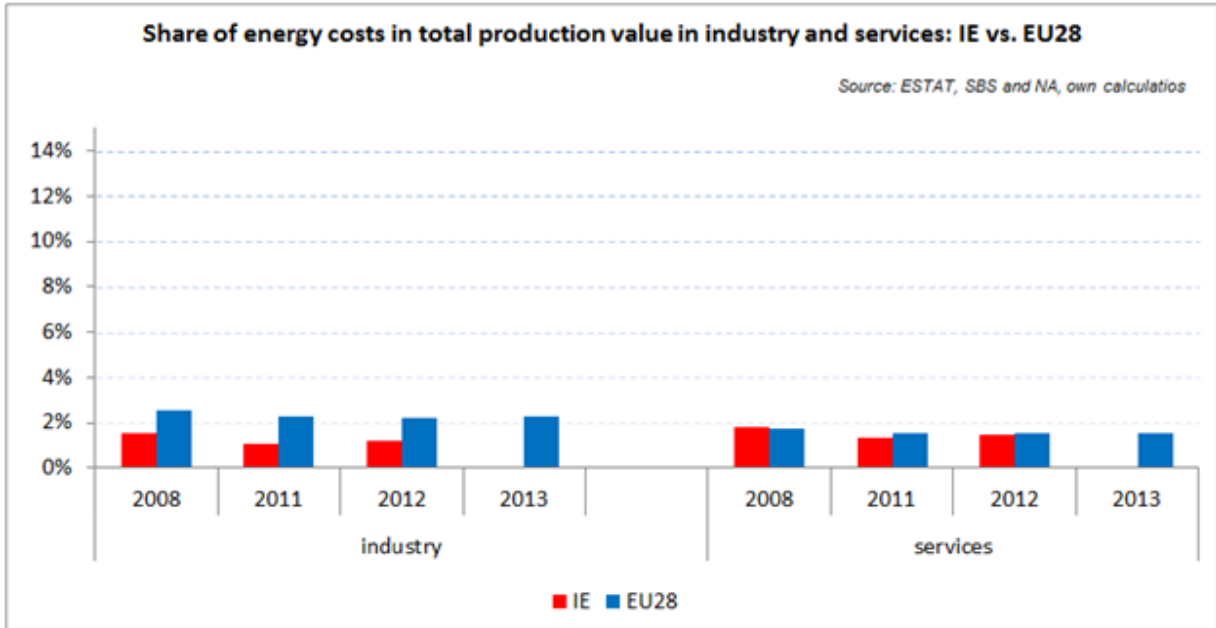


### Energy in Households budgets



With the exception of the poorest households (Quintile 1), where the share of energy within the total household expenditure remained practically unchanged, around 8 %, between 2005 (red line) and 2010 (green line) in Ireland, all other households had to spend 1.5-2% higher share of their total expenditure on energy in 2010 than in 2005.

### Energy costs shares in total production costs



Notes  
 Data for Malta, Poland, Slovenia (prior to 2012) and Ireland (after 2012) is not available  
 Data for 2009 and 2010 is incomplete and not reported  
 Industry defined as NACE Rev.2 Section C (Manufacturing)  
 Services defined as NACE Rev. 2 Sections G - U

## Electricity and gas prices – Breakdown by price element

<b>Band DC</b>	<b>EUR/kWh 2015</b>
Energy and supply	0.131100
<b>Total energy component</b>	<b>0.131100</b>
Network	0.065900
<b>Total network component</b>	<b>0.065900</b>
Indigenous Fuel (Peat) Support	0.006300
Security of Supply	0.005500
Renewables and CHP	0.005000
VAT	0.028900
<b>Total taxes &amp; levies component</b>	<b>0.045700</b>
<b>Total price</b>	<b>0.242700</b>

<b>Band IB</b>	<b>EUR/kWh 2015</b>
Energy and supply	0.103900
<b>Total energy component</b>	<b>0.103900</b>
Network	0.045700
<b>Total network component</b>	<b>0.045700</b>
Indigenous Fuel (Peat) Support	0.005200
Security of Supply	0.004600
Renewables and CHP	0.004100
VAT	0.000000
Electricity Tax	0.000500
<b>Total taxes &amp; levies component</b>	<b>0.014400</b>
<b>Total price</b>	<b>0.164000</b>

<b>Band D2</b>	<b>EUR/kWh 2015</b>

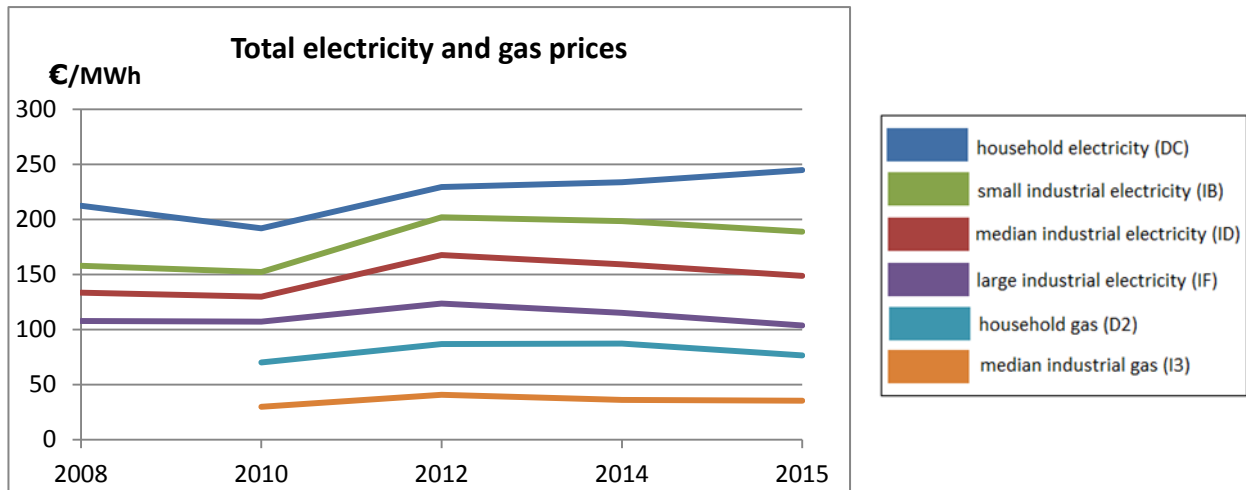
<b>Total energy component</b>	<b>0.000000</b>
<b>Total network component</b>	<b>0.000000</b>
Carbon Tax	0.003800
VAT	0.008000
<b>Total taxes &amp; levies component</b>	<b>0.011800</b>
<b>Total price</b>	<b>0.011800</b>

<b>Band I3</b>	<b>EUR/kWh 2015</b>
<b>Total energy component</b>	<b>0.000000</b>
<b>Total network component</b>	<b>0.000000</b>
Carbon Tax	0.003600
VAT	0.000000
<b>Total taxes &amp; levies component</b>	<b>0.003600</b>
<b>Total price</b>	<b>0.003600</b>

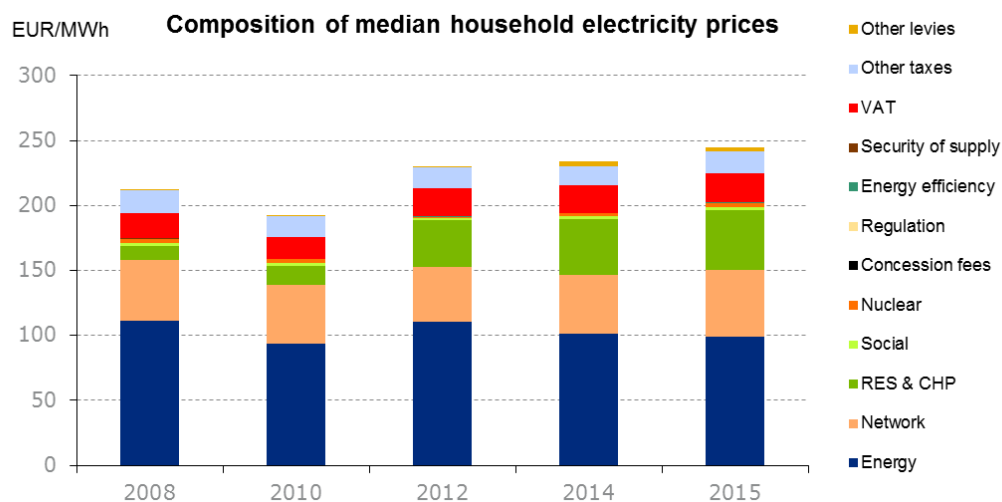
# Italy

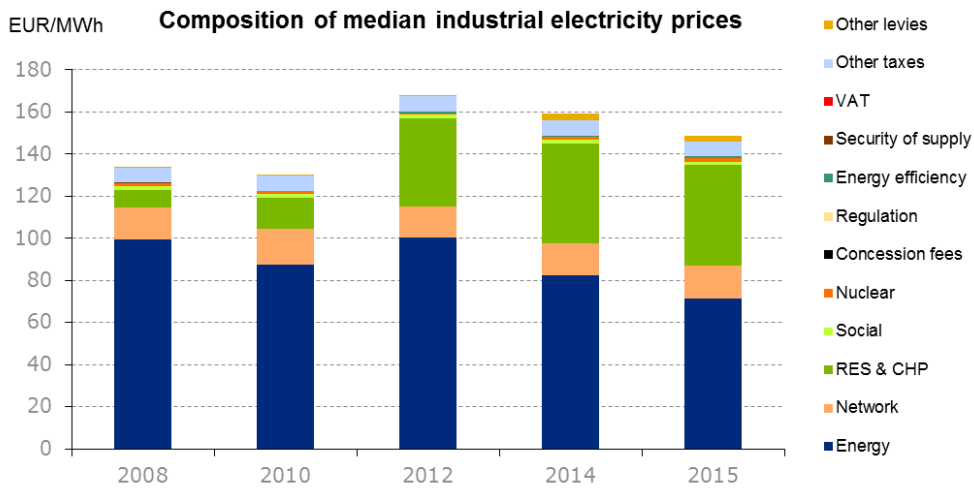


## Evolution of electricity and natural gas prices

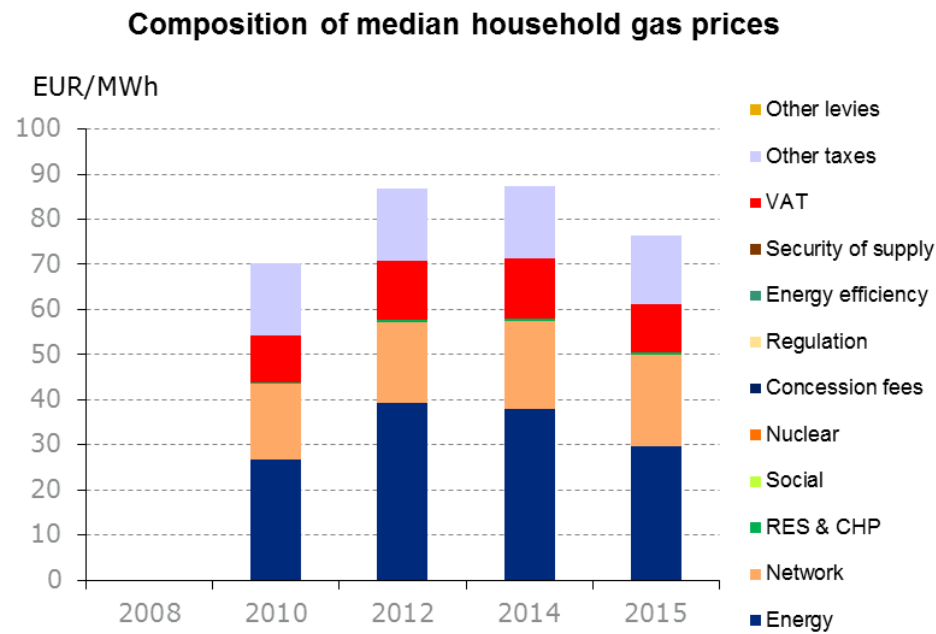


## Composition of electricity prices

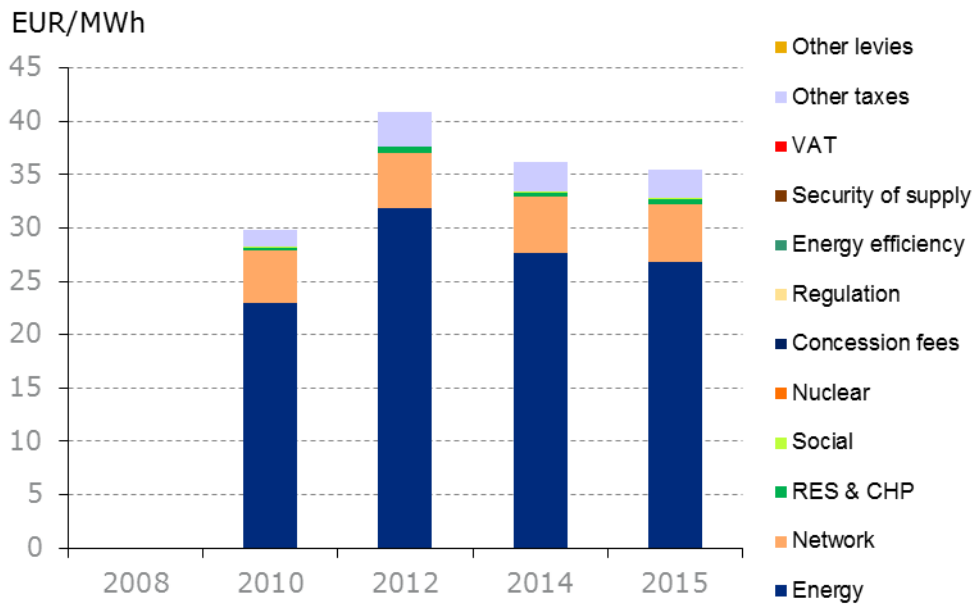




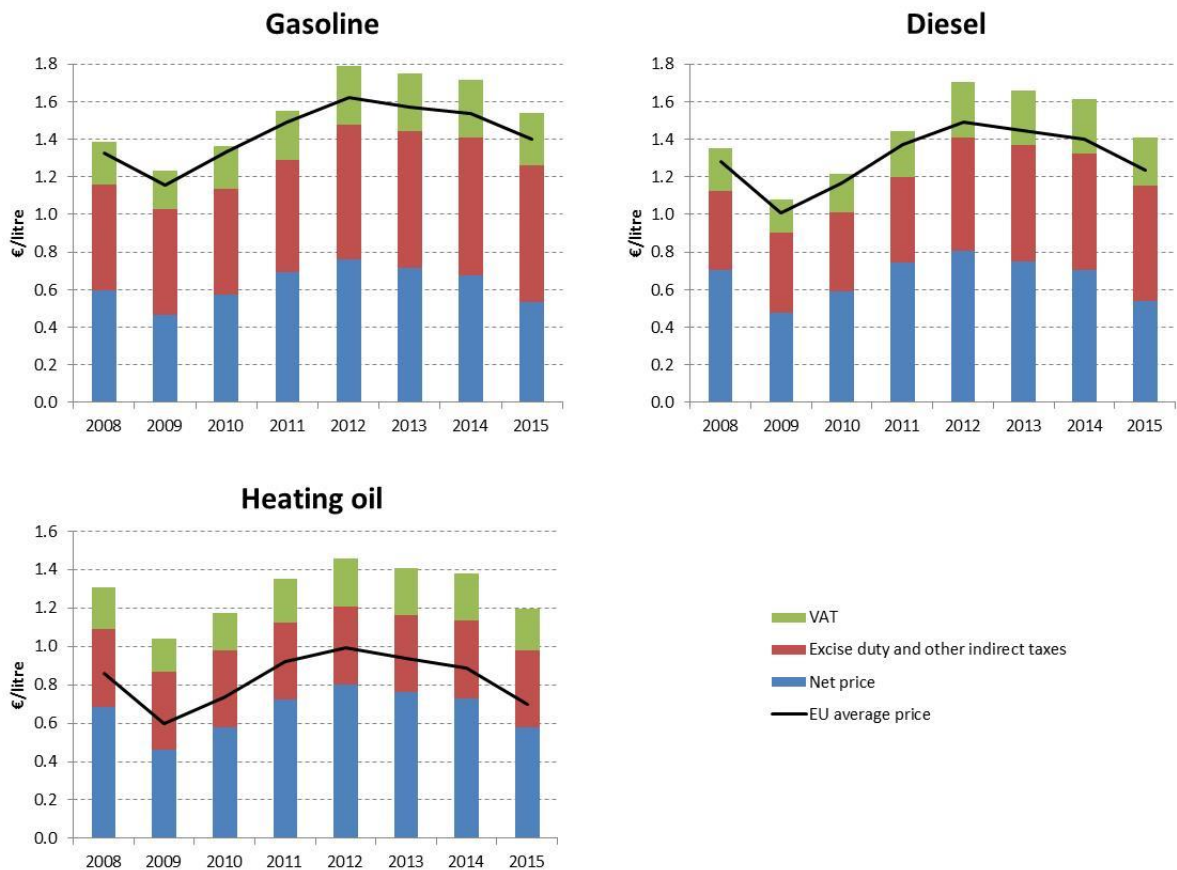
### Composition of gas prices



## Composition of median industrial gas prices

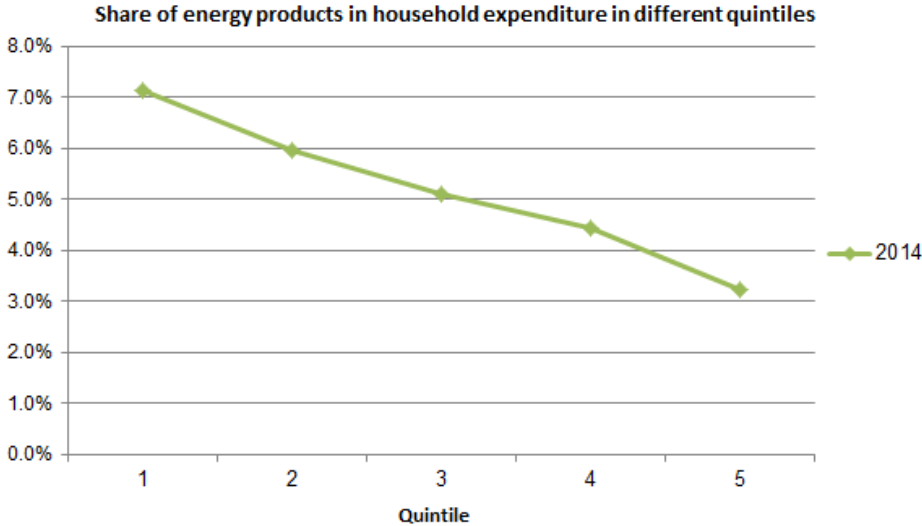


## Oil products prices



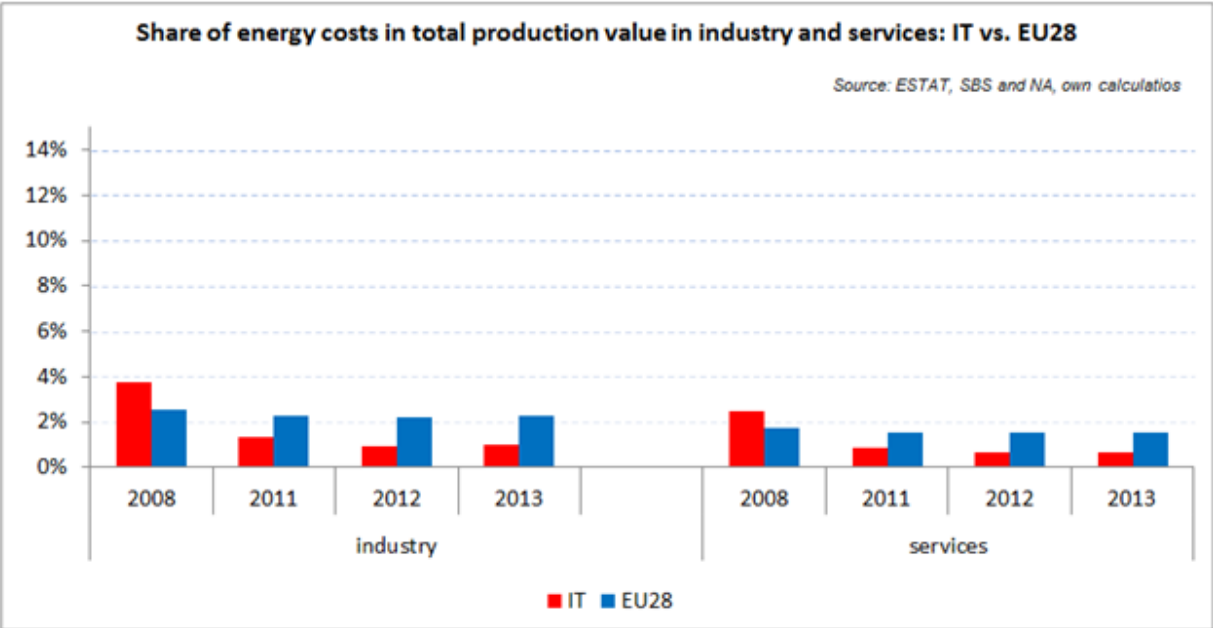


**Energy in Households budgets**



In the case of Italy data on the share of energy in the total household expenditure are only available for 2014, showing that in this year the poorest households (Quintile 1) spent 7.1% of their expenditure on energy. In the same year households with middle income (Quintile 3) and high income (Quintile 5) respectively spent only 5.1% and 3.2% of their total expenditure on energy.

**Energy costs shares in total production costs**



Notes  
 Data for Malta, Poland, Slovenia (prior to 2012) and Ireland (after 2012) is not available  
 Data for 2009 and 2010 is incomplete and not reported  
 Industry defined as NACE Rev.2 Section C (Manufacturing)  
 Services defined as NACE Rev. 2 Sections G - U

## Electricity and gas prices – Breakdown by price element

<b>Band DC</b>	<b>EUR/kWh 2015</b>
Energy and supply	0.098920
<b>Total energy component</b>	<b>0.098920</b>
Network	0.051530
<b>Total network component</b>	<b>0.051530</b>
A6: Stranded costs	0.000000
A5: costs of R&D	0.000250
UC7: costs arising from measures to promote energy efficiency in end uses	0.000230
Excise Tax	0.017020
AE: incentives for manufacturing enterprises with high electricity consumption	0.003050
A4: costs for subsidized customers (state railways)	0.000750
VAT	0.022260
AS: cost of social bonus	0.000090
A3: incentives to renewable generation	0.046030
UC4: islands compensations	0.000400
A2: decommissioning costs of nuclear plants	0.003620
MCT: geographical compensation measures	0.000730
<b>Total taxes &amp; levies component</b>	<b>0.094430</b>
<b>Total price</b>	<b>0.244880</b>
<b>Band IB</b>	<b>EUR/kWh 2015</b>
Energy and supply	0.084620
<b>Total energy component</b>	<b>0.084620</b>
Network	0.028140
<b>Total network component</b>	<b>0.028140</b>
A6: Stranded costs	0.000000
A5: costs of R&D	0.000220
UC7: costs arising from measures to promote energy efficiency in end uses	0.000630
Excise Tax	0.012380
AE: incentives for manufacturing enterprises with high electricity consumption	0.003030
A4: costs for subsidized customers (state railways)	0.001030
VAT	0.000000
AS: cost of social bonus	0.000070
A3: incentives to renewable generation	0.055850
UC4: islands compensations	0.000270

A2: decommissioning costs of nuclear plants	0.002470
MCT: geographical compensation measures	0.000200
<b>Total taxes &amp; levies component</b>	<b>0.076150</b>
<b>Total price</b>	<b>0.188910</b>

<b>Band D2</b>	<b>EUR/kWh 2015</b>
Energy and supply	0.029710
<b>Total energy component</b>	<b>0.029710</b>
Network	0.020110
<b>Total network component</b>	<b>0.020110</b>
Excise duty and regional surcharge	0.015400
VAT	0.010760
RE: for energy saving actions and renewable energy development	0.000540
<b>Total taxes &amp; levies component</b>	<b>0.026700</b>
<b>Total price</b>	<b>0.076520</b>

<b>Band I3</b>	<b>EUR/kWh 2015</b>
Energy and supply	0.026800
<b>Total energy component</b>	<b>0.026800</b>
Network	0.005390
<b>Total network component</b>	<b>0.005390</b>
Excise duty and regional surcharge	0.002590
VAT	0.000000
RE: for energy saving actions and renewable energy development	0.000510
GS: cost of social bonus	0.000110
<b>Total taxes &amp; levies component</b>	<b>0.003210</b>
<b>Total price</b>	<b>0.035400</b>

