



Brussels, 4.5.2018  
SWD(2018) 246 final

PART 5/9

**COMMISSION STAFF WORKING DOCUMENT**  
*Accompanying the document*

**Report from the Commission to the Council and the European Parliament  
on the implementation of Council Directive 91/676/EEC concerning the protection of  
waters against pollution caused from agricultural sources based on Member State  
reports for the period 2012-2015**

{COM(2018) 257 final}

## SECTION II

### AGRICULTURAL PRESSURES IN THE EU: STATUS AND TRENDS

#### Pressures and consequences

Agriculture provides multiple benefits to society. However, some farming activities result in the alteration of the nitrogen and phosphorus cycles and represent an important pressure on the environment. The intensity of this pressure is dynamic and there can be important differences based on local environmental conditions, characteristics of the production systems and the intensity of production.

Large livestock numbers concentrated locally or regionally pose high risks to the environment when manure production is out of balance with land availability and crop nutrient requirements. This imbalance creates a surplus of nutrients much of which is sooner or later lost to water (nitrates and phosphates) and air (ammonia and nitrogen oxides), if not exported out of the region sometime leading to additional pressures in receiving areas. In particular the loss of nutrients into Europe's waters can result in numerous negative impacts on human health and the environment, such as groundwater pollution and the loss of habitats and biodiversity.

#### Farm numbers and farm size

In 2013, there were approximately 10.9 million farms in the EU-28, which is an 11% decrease compared to 2010 (*Table 10*). Farm numbers decreased in all Member States, varying from decreases of less than 1% (Ireland) to 38% (Italy), with the exception of the Czech Republic where farm numbers increased by 15%. Farms with livestock decreased from approximately 6.9 to 6.2 million (-10%) in the EU-28 between 2010 and 2013.

The utilized agricultural area showed varying changes between the reporting periods 2008-2011 and 2012-2015 (*Table 9*), with an average decrease of 1%. Member States with relative larger decreasing areas (<-2%) were Austria, Cyprus, Spain, Hungary, Ireland, Italy, the Netherlands and Poland. Relative large increasing areas (>+2%) were observed in Estonia, Greece, Croatia, Lithuania, Latvia and Malta.

Average farm sizes increased from 14.7 to 16.4 ha (+12%) between 2010 and 2013 (*Table 11*). The changes in farm size varied from -13% in the Czech Republic to +77% in Croatia. Small farms (<5 ha) are seen in Cyprus, Malta and Romania, whereas relatively large (>50 ha) are seen in the Czech Republic, Germany, Denmark, France, Luxemburg, Slovakia and the United Kingdom.

#### Livestock

Because not all Member States have submitted comprehensive data concerning agriculture, official statistics from Eurostat have been used to complement the information provided by the Member States<sup>1</sup>.

The total number of livestock units (comprising cattle, pigs, sheep, goats, poultry, horses and rabbits) in the EU-28 decreased by 3.6% between 2010 and 2013 (*Table 17*). Six Member States (the Czech Republic, Germany, Estonia, Finland, Ireland and Latvia) showed an increasing livestock population varying from less than 1% to 3.5%. Relatively large (<-10%) decreases were seen in Bulgaria, Cyprus, Denmark, Greece, Croatia, Malta and Poland.

The average livestock density decreased, by 2.9% between 2010 and 2013 (*Table 18*), from 0.75 to 0.73 livestock units per ha. In 2013, the livestock density varied from 0.21 livestock units per ha in Bulgaria to 3.57 livestock units per ha in the Netherlands. Other countries with relatively high livestock densities (>1.5 livestock units per ha) are Belgium, Cyprus, Denmark and Malta.

The total number of cattle in the EU-28 decreased by 0.7% between the reporting periods 2008-2011 and 2012-2015 (*Table 12*). The changes varied from -11% to +14%. Relatively large increases (>+4%) were observed in Hungary, Estonia, Latvia, Cyprus and the Netherlands while relatively large decreases (<-4%) in Romania, Malta, Greece, and Lithuania.

The total number of dairy cattle in the EU-28 decreased by 0.9% between the reporting periods 2008-2011 and 2012-2015 (*Table 13*). The changes varied from -19% to +14%. Relatively large (>+4%) increases were observed in Cyprus, Italy, Ireland and the Netherlands while relatively large decreases (<-4%) were observed in Croatia, Greece, Lithuania, Malta, Poland, Portugal, Romania and Slovakia.

The total number of pigs in the EU-28 decreased by 3% between the reporting periods 2008-2011 and 2012-2015 (*Table 14*). Most countries showed decreasing pig populations, except Belgium, Germany, Denmark, Spain, Luxemburg, the Netherlands and Portugal. Relatively large decreases (< -10%) were observed in Bulgaria, Cyprus, the Czech Republic, Lithuania, Malta, Poland, Romania and Slovenia.

The total number of poultry in the EU-28 decreased by 0.5% between 2010 and 2013 (*Table 15*). The changes varied from -43% to +38%. Relatively large (>+15%) increases were observed in Finland, Germany<sup>2</sup>, Luxemburg and Sweden, while relatively large decreases (<-15%) were observed in Bulgaria, Cyprus, Greece, Hungary and Portugal.

Changes in sheep numbers between reporting periods 2008-2011 and 2012-2015 showed large variations between Member States (*Table 16*). A very large increase was seen in Lithuania

---

<sup>1</sup> The Member States Summary Sheets - in Section VIII- is based exclusively on data reported from the Member States under the Nitrates Directive. It should be noted that it has been observed that in some cases there are discrepancies between the data reported by the Member States and Eurostat data.

<sup>2</sup> Germany stated in their Article 10 report that the figure for 2013 is underestimated.

(+107%), and to some extent also in Latvia (+24%). Relatively large decreases (<-10%) were observed in Germany, Spain, Italy, Malta, the Netherlands and Portugal.

The nutrients excretion rate might vary between Member States. Therefore variations in animal numbers are not directly comparable in terms of nutrients production.

### **Animal manure**

The total use of animal manure nitrogen in the EU-28 decreased from 9.5 to 9.2 kton N (-2.6%) between the reporting periods 2008-2011 and 2012-2015 (*Table 21*). The changes varied from -13% (Czech Republic) to +7% (Hungary). Relatively large (>+5%) increases were observed in Hungary and Latvia. Relatively large (<-5%) decreases were observed in Bulgaria, Cyprus, the Czech Republic, Malta, Poland, Romania and Slovenia.

The total use of animal manure phosphate in the EU-28 decreased from 1.66 to 1.61 kton P (-3.1%) between the reporting periods 2008-2011 and 2012-2015 (*Table 22*). The changes varied from -15% (Czech Republic) to +8% (Hungary). Relatively large (>+5%) increases were observed in Estonia, Hungary and Latvia. Relatively large (<-5%) decreases were observed in Bulgaria, Cyprus, the Czech Republic, Croatia, Malta, the Netherlands, Poland, Romania and Slovenia.

### **Mineral fertilizer use**

The total use of mineral fertiliser nitrogen in the EU-28 increased from 10.5 to 11.0 kton N (+4%) between the reporting periods 2008-2011 and 2012-2015 (*Table 19*). The changes varied from -30% (Croatia) to +56% (Bulgaria). Relatively large (>+15%) increases were observed in Bulgaria, the Czech Republic, Spain, Hungary, Lithuania, Latvia, Portugal and Slovakia.

The total use of mineral fertiliser phosphate in the EU-28 increased from 1.07 to 1.13 kton P (+6%) between the reporting periods 2008-2011 and 2012-2015 (*Table 20*). The changes varied from -46% (the Netherlands) to +56% (Bulgaria). Relatively large (>+15%) increases were observed in Austria, Bulgaria, the Czech Republic, Denmark, Spain, Hungary, Ireland, Lithuania, Latvia and Slovakia. Relatively large (<-15%) decreases were observed in Belgium, Greece, Italy, Malta and the Netherlands.

### **Nutrient surplus**

A nutrient surplus occurs when not all the fertilizers and animal manure applied to the land are absorbed by the plants or removed during harvest. A surplus represents a potential loss to the environment or accumulation in the soil.

In the current reporting period, the net nitrogen balance in the EU-28 varies from around zero to around 147 kg N per ha (*Table 23*). Member States with relatively high surpluses (>50 kg N/ha) are Belgium, Cyprus, Czech Republic, Denmark, Luxemburg, the Netherlands and the United Kingdom. The net nitrogen balance in the EU-28 increased from 31.8 to 32.5 kg N/ha (+2.4%) between the reporting periods 2008-2011 and 2012-2015. The changes varied from -28 kg N/ha (Malta) to +10 kg N/ha (Ireland). Increase of >+5 kg N/ha were observed in Austria, Bulgaria, the Czech Republic, Hungary, Ireland, Slovenia and Slovakia. Decreases

of >5 kg N/ha were observed in Denmark, Estonia, Greece, Croatia, Lithuania, Malta, the Netherlands and Sweden.

In the current reporting period, the phosphate balance in the EU-28 varies from – 7 to +30 kg P per ha (Table 24). Member States with negative surpluses are Bulgaria, Czech Republic, Estonia, Hungary, Italy, Romania, Sweden and Slovakia. Relatively high surpluses (>5 kg P/ha) are observed in Belgium, Cyprus, Denmark, Croatia and Malta. The phosphate balance in the EU-28 increased from 1.8 to 2.0 kg P/ha (+14%) between the reporting periods 2008-2011 and 2012-2015. The changes varied from -5.5 kg P/ha (Malta) to +3 kg P/ha (Austria). Relatively large (>2 kg P/ha) increases were observed in Austria and Hungary. Relatively large decreases (<-2 kg P/ha) were observed in Malta, the Netherlands and Poland.

### **Nitrogen discharge**

Data on nitrogen discharge into the aquatic environment has not been provided by all Member States (Table 6). For the Member States that reported comparable data for both periods (Belgium-Wallonia, Cyprus, Czech Republic, Germany, Estonia, Finland, France, Ireland, Luxemburg, Poland, Romania, UK-Northern Ireland and UK-Scotland), the average nitrogen discharge decreased by 3%. Increases were observed for Czech Republic, Estonia, Ireland and UK-Northern Ireland). In the reporting period 2012-2015 the contribution from agriculture varies from around 50% to nearly 100%.

MS	Nitrogen discharge (kton N)			Contribution agriculture (%)			Specific reference years*
	2008-2011	2012-2015	Change (%)	2008-2011	2012-2015	Change (%)	
AT	80	no data		50	no data		2001 - 2006
BE-F	24	16	-33	no data	no data		1990 / 2011
BE-W	18	15	-17	81	no data		
BG	no data	no data		no data	no data		
CY	27	16	-41	no data	no data		
CZ	217	223	3	95	96	1	
DE	56	56	0	86	88	2	
DK	no data	no data		no data	no data		
EE	23	26	13	85	96	13	
EL	no data	no data		no data	no data		
ES	no data	no data		no data	no data		
FI	39	35	-10	74	70	-5	
FR	720	809	12	no data	no data		
HR	no data	122		no data	96		
HU	410	459	12	93	96	3	2009 / 2011
IE	767	786	2	no data	no data		
IT	no data	no data		no data	no data		
LT	no data	no data		no data	no data		
LU	3	3.0	0	65	73	12	
LV	no data	no data		no data	no data		
MT	0.2	no data		no data	no data		
NL	57	51	-11	63	62	-2	2010 - 2012 / 2013
PL	1696	1521	-10	99	99	0	
PT	no data	155		no data	87		
RO	820	792	-3	no data	no data		
SE	94	95	1	81	81	0	2009 / 2011
SI	no data	no data		87	89	2	
SK	no data	17		no data	50		
UK-EN	no data	193		no data	69		2012
UK-NI	16	17	6	79	79	0	
UK-SC	189	169	-11	72	70	-3	
UK-WA	no data	no data		no data	no data		

**Table 6.** Annual average nitrogen discharge (kton N) to the aquatic environment and relative contribution of agriculture (%), presented in the article 10 reports of the Member States for reporting periods 2008-2011 and 2012-2015. \* If different from 2008-2001 and 2012-2015.

MS	Cattle				Pigs				Poultry			
	2008-2011	2012-2015	Change (%)	Specific reference	2008-2011	2012-2015	Change (%)	Specific reference	2008-2011	2012-2015	Change (%)	Specific reference
AT	2.01	1.96	-2.6	2010 / 2014	3.13	2.87	-8.5	2010 / 2014	14.74	15.73	6.7	2010 / 2014
BE-FL	1.33	1.30	-2.3		6.12	6.30	2.9		26.29	29.88	13.7	
BE-WA	1.28	1.22	-4.7		0.36	0.34	-5.6		5.07	4.98	-1.8	
BG	0.55	0.55	-0.4		0.69	0.57	-18.2		16.70	14.67	-12.1	
CY	0.06	0.06	3.5		0.44	0.36	-18.2		3.83	3.30	-13.8	
CZ	1.34	1.41	4.7		1.75	1.56	-10.8		21.25	22.51	5.9	
DE	12.71	12.69	-0.2	2010 / 2013	26.90	28.13	4.6	2010 / 2013	128.90 <sup>1</sup>	177.33	37.6	
DK	1.56	1.52	-2.6		21.30	20.10	-5.6		18.30	18.60	1.6	
EE	0.24	0.26	8.3		0.37	0.26	-29.7		1.91	2.22	16.2	
EL	0.63	0.43	-31.7		0.90	0.20	-77.8		31.60	46.60	47.5	
ES	no data	no data			no data	no data			no data	no data		
FI	0.93	0.91	-1.7		1.37	1.24	-9.5		9.59	12.58	31.2	
FR	19.40	18.80	-3.1	2010 / 2013	13.80	13.30	-3.6	2010 / 2013	335.70	335.90	0.1	2010 / 2013
UK-EN	5.40	5.21	-3.5	2011 / 2015	3.60	3.83	6.4	2011 / 2015	120.29	125.43	4.3	2011 / 2015
UK-WA	1.13	1.11	-1.8		0.03	0.03	0.0		7.53	8.46	12.4	
UK-SC	1.80	1.81	0.3		0.39	0.33	-16.4		14.53	14.17	-2.5	
UK-NI	1.59	1.60	0.2		0.42	0.50	18.2		17.54	20.05	14.3	
HR	no data	0.46			no data	1.51			no data	12.88		
HU	0.69	0.82	18.3		3.27	3.12	-4.3		40.72	37.12	-8.8	
IE	6.60	6.90	4.5		1.50	1.60	6.7					
IT	6.00	6.00	0.0		11.00	11.00	0.0		183.00	186.00	1.6	
LT	0.76	0.73	-3.9		0.89	0.76	-14.6		9.08	9.40	3.5	
LU	0.20	0.20	-0.5		0.08	0.09	9.8		0.09	0.11	25.6	
LV	0.38	0.41	7.9		0.38	0.32	-14.4		5.16	4.22	-18.2	
MT	0.02	0.01	-35.9		0.07	0.03	-60.1		1.20	0.08	-93.5	
NL	3.90	4.00	2.6		12.20	12.30	0.8		97.90	100.70	2.9	
PL	5.76	5.76	0.0		15.28	10.59	-30.7		176.49	153.21	-13.2	
PT	1.40	1.40	0.0		1.90	1.80	-5.3		35.40			
RO	1.99	2.03	2.2		5.36	5.15	-4.0		79.84	78.34	-1.9	
SE	1.54	1.50	-2.7	2009 / 2013	1.53	1.40	-8.5	2009 / 2013	12.42	16.54	33.2	2009 / 2013
SI	0.47	0.46	-1.3		0.40	0.29	-27.4		4.56	5.00	9.8	
SK	0.47	0.47	-1.1		0.69	0.64	-7.5		12.30	11.77	-4.3	

**Table 7.** Average livestock numbers (1,000,000) presented in the article 10 reports of the Member States for reporting periods 2008-2011 and, 2012-2015, and the change between the two reporting periods.

\* If different from 2008-2001 and 2012-2015; 1: DE reported that the figure was underestimated.

MS	Animal manure				Fertilizer			
	2008-2011	2012-2015	Change (%)	Specific reference year*	2008-2011	2012-2015	Change (%)	Specific reference year*
AT	174	167	-4.0	2010 / 2013	104	107	3.2	2010 / 2013
BE-FL	100	95	-4.9	2012-2014	39	39	0.0	2012-2014
BE-WA	74	71	-4.9		74	76	3.7	
BG	69	73	6.9		186	191	2.9	
CY	15	9	-37.2		8	7	-6.3	
CZ	69	63	-8.7		353	397	12.6	
DE	1246	1277	2.5	2010 / 2013	1578	1597	1.2	2010-2011
DK	227	217	-4.4		197	202	2.5	
EE	22	23	2.7		30	34	12.2	
EL	65	57	-12.2		225	no data		
ES	no data	no data			no data	no data		
FI	78	75	-3.4		157	147	-5.8	
FR	1777	1720	-3.2	2010 / 2014	2080	2200	5.8	2010 / 2014
UK-EN	305 <sup>1</sup>	no data			824 <sup>2</sup>	819 <sup>2</sup>	-0.6	2011/2015
UK-WA	no data	no data			824 <sup>2</sup>	819 <sup>2</sup>	-0.6	2011/2015
UK-SC	152	151	-0.7		127	143	12.6	
UK-NI	97 <sup>3</sup>	98 <sup>3</sup>	1.2		68	71	4.1	
HR	no data	49			no data	74		
HU	121	123	1.6		288	335	16.3	
IE	449	459	2.2		319	328	3.0	
IT	371 <sup>4</sup>	352 <sup>4</sup>	-5.1		545 <sup>5</sup>	803 <sup>5</sup>	47.3	
LT	53	47	-11.4		no data	no data		
LU	12	12	0.0		13	13	0.8	
LV	3533 <sup>6</sup>	3967 <sup>6</sup>	12.3		60	76	26.8	
MT	no data	no data			0.6	0.6	0.0	
NL	314	301	-4.1		204	190	-6.9	
PL	483	517	7.0		1091	1004	-8.0	
PT	no data	no data			no data	no data		
RO	399	410	2.8		313	312	-0.2	
SE	99	103	4.0	2009 / 2013	157	155	-1.0	2009 / 2013
SI	29	29	-1.0		27	27	1.5	
SK	46	48	4.8		96	116	20.4	

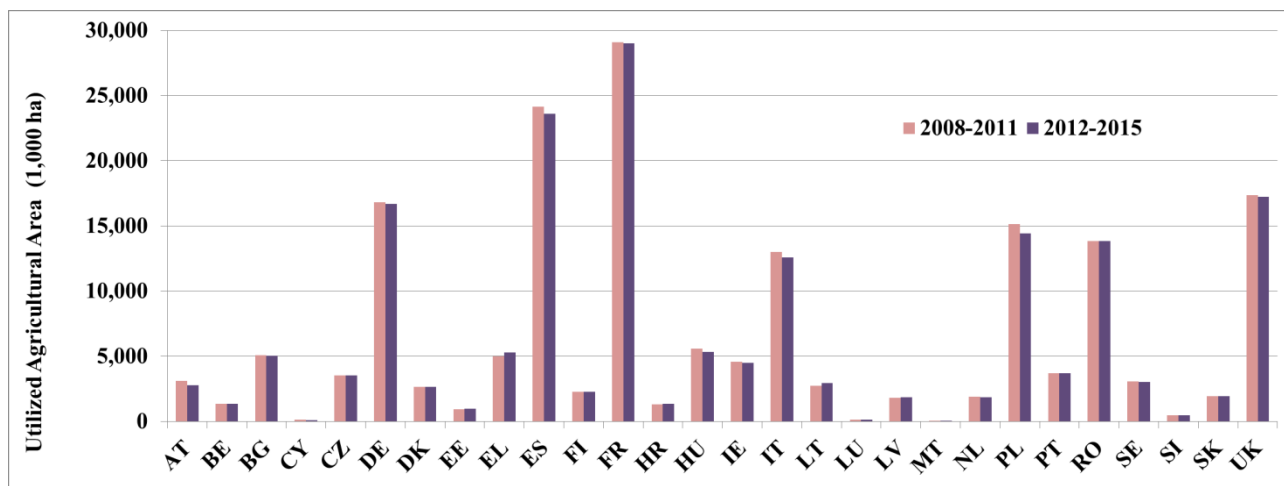
**Table 8.** Average annual animal manure nitrogen and fertiliser nitrogen use (1,000 kg N) presented in the article 10 reports of the Member States for reporting periods 2008-2011 and 2012-2015, and the change between the two reporting periods.

\* If different from 2008-2001 and 2012-2015; 1: 2010 survey; 2 England & Wales; 3 Report also stated different values (116/118); 4 Data from 65% of the regions; 5 Data from 75% of the regions; 6 kg manure (no N content available).

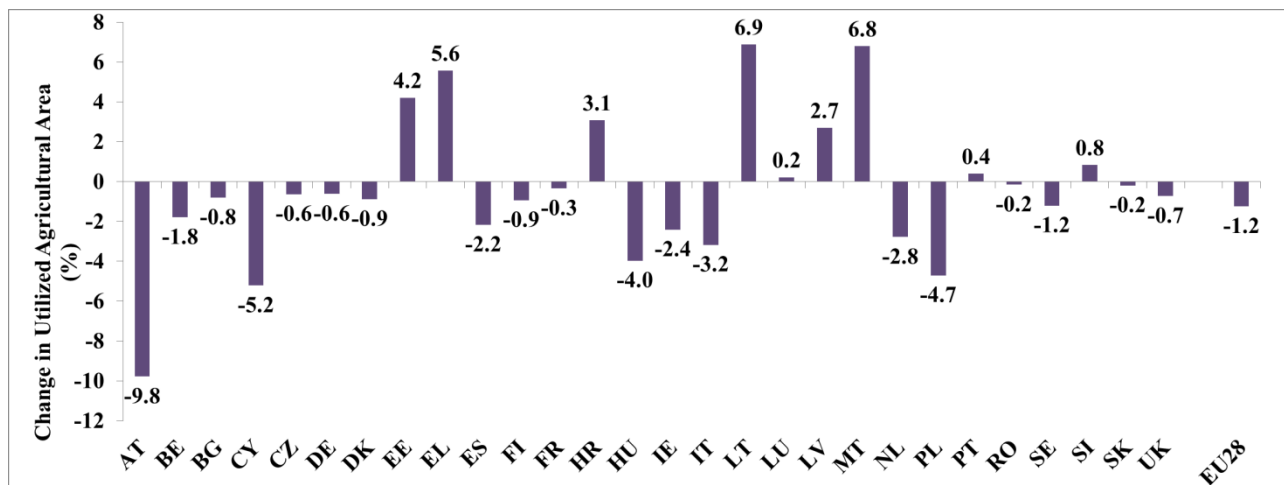


	2008	2009	2010	2011	2012	2013	2014	2015	08-11	12-15	Change
AT	3,171	3,169	3,166	2,868	2,864	2,862	2,716	2,720	3,093	2,791	-9.8%
BE	1,374	1,365	1,358	1,337	1,334	1,339	1,333	1,331	1,359	1,334	-1.8%
BG	5,101	5,030	5,052	5,088	5,123	4,995	4,977	5,011	5,068	5,027	-0.8%
CY	127	125	115	116	116	107	107	126	120	114	-5.2%
CZ	3,572	3,546	3,524	3,504	3,526	3,521	3,516	3,494	3,536	3,514	-0.6%
DE	16,926	16,890	16,704	16,721	16,667	16,700	16,725	16,731	16,810	16,706	-0.6%
DK	2,683	2,639	2,676	2,673	2,664	2,628	2,652	2,633	2,668	2,644	-0.9%
EE	907	932	949	946	956	966	975	994	933	973	4.2%
EL	4,774	4,936	4,839	5,477	5,596	5,315	5,139	5,092	5,007	5,286	5.6%
ES	24,718	24,190	23,719	23,894	23,463	23,495	23,572	23,897	24,131	23,607	-2.2%
FI	2,296	2,296	2,292	2,287	2,285	2,259	2,267	2,273	2,293	2,271	-0.9%
FR	29,385	28,876	29,311	28,853	29,001	28,976	28,930	29,115	29,106	29,005	-0.3%
HR	1,289	1,300	1,334	1,326	1,331	1,301	1,241	1,538	1,312	1,353	3.1%
HU	5,790	5,783	5,343	5,337	5,338	5,340	5,346	5,346	5,563	5,343	-4.0%
IE	4,629	4,594	4,569	4,556	4,533	4,478	4,465	4,429	4,587	4,476	-2.4%
IT	13,338	13,111	12,885	12,670	12,548	12,426	12,720	12,661	13,001	12,589	-3.2%
LT	2,672	2,689	2,772	2,806	2,842	2,891	2,952	3,006	2,735	2,923	6.9%
LU	131	131	131	131	131	131	131	131	131	131	0.2%
LV	1,825	1,833	1,806	1,816	1,841	1,878	1,873	1,885	1,820	1,869	2.7%
MT	10	10	11	11	11	12	12	12	11	12	6.8%
NL	1,933	1,921	1,872	1,858	1,842	1,848	1,839	1,846	1,896	1,843	-2.8%
PL	15,608	15,625	14,603	14,780	14,529	14,410	14,424	14,398	15,154	14,440	-4.7%
PT	3,726	3,695	3,654	3,649	3,664	3,716	3,701	3,700	3,681	3,696	0.4%
RO	13,634	13,621	14,156	13,982	13,733	13,905	13,830	13,835	13,848	13,826	-0.2%
SE	3,076	3,067	3,074	3,063	3,032	3,036	3,036	3,028	3,070	3,033	-1.2%
SI	492	469	483	458	480	479	482	477	475	479	0.8%
SK	1,936	1,930	1,922	1,930	1,927	1,929	1,925	1,922	1,929	1,926	-0.2%
UK	17,703	17,325	17,234	17,172	17,282	17,259	17,240	17,147	17,359	17,232	-0.7%
EU-28	182,824	181,096	179,553	179,310	178,660	178,199	178,127	178,779	180,696	178,441	-1.2%

**Table 9.** Utilized agricultural area (1,000 ha) in the period 2008-2015, and the change between the periods 2008-2011 and 2012-2015 (Source: Eurostat, June 2017).



**Figure 18** Utilized agricultural area (1,000 ha) in the reporting periods 2008-2011 and 2012-2015 (Source: Eurostat, June 2017).



**Figure 19** Change in utilized agricultural area (%) between the reporting periods 2008-2011 and 2012-2015 (Source: Eurostat, June 2017).

	2010	2013	Change
AT	150,170	140,430	-6.5%
BE	42,850	37,760	-11.9%
BG	370,490	254,410	-31.3%
CY	38,860	35,380	-9.0%
CZ	22,860	26,250	14.8%
DE	299,130	285,030	-4.7%
DK	41,360	38,280	-7.4%
EE	19,610	19,190	-2.1%
EL	723,060	709,500	-1.9%
ES	989,800	965,000	-2.5%
FI	63,870	54,400	-14.8%
FR	516,100	472,210	-8.5%
HR	233,280	157,440	-32.5%
HU	576,810	491,330	-14.8%
IE	139,890	139,600	-0.2%
IT	1,620,880	1,010,330	-37.7%
LT	199,910	171,800	-14.1%
LU	2,200	2,080	-5.5%
LV	83,390	81,800	-1.9%
MT	12,530	9,360	-25.3%
NL	72,320	67,480	-6.7%
PL	1,506,620	1,429,010	-5.2%
PT	305,270	264,420	-13.4%
RO	3,859,040	3,629,660	-5.9%
SE	71,090	67,150	-5.5%
SI	74,650	72,380	-3.0%
SK	24,460	23,570	-3.6%
UK	185,200	183,040	-1.2%
EU-28	12,245,700	10,838,290	-11.5%

**Table 10.** Number of farms in 2010 and 2013, and the change between 2010 and 2013 (Source: Eurostat, June 2017).

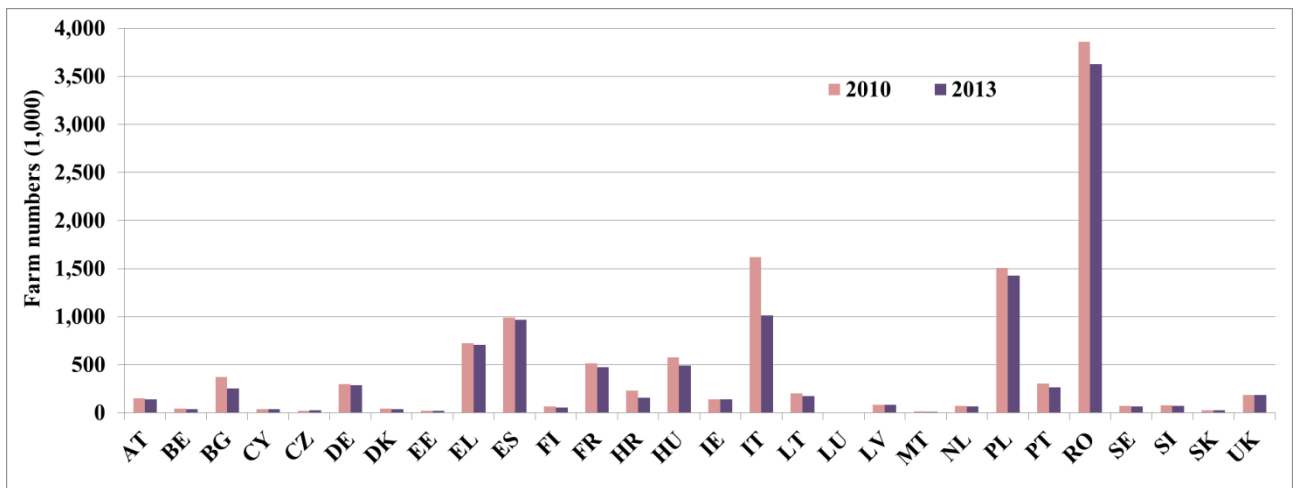


Figure 20 Number of farms in 2010 and 2013 (Source: Eurostat, June 2017).

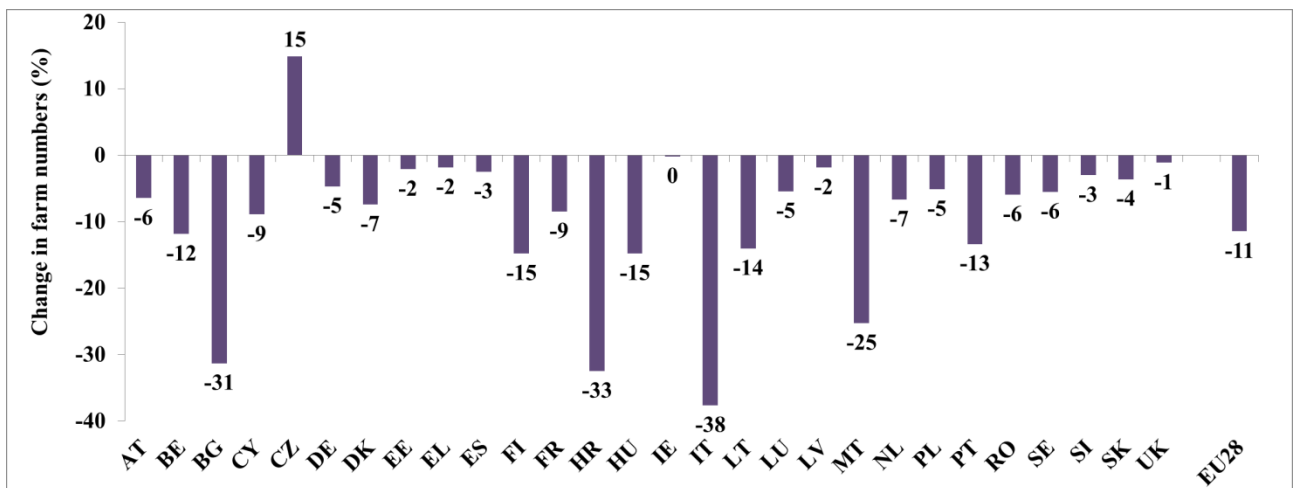


Figure 21 Change in the number of farms (%) between 2010 and 2013 (Source: Eurostat, June 2017).

	2010	2013	Change
AT	19	19	1.3%
BE	32	35	9.3%
BG	12	18	51.3%
CY	3	3	1.4%
CZ	152	133	-12.7%
DE	56	59	4.9%
DK	64	68	6.9%
EE	48	50	4.0%
EL	7	7	-4.4%
ES	24	24	0.6%
FI	36	42	17.0%
FR	54	59	8.9%
HR	6	10	76.9%
HU	8	9	16.7%
IE	36	36	-0.4%
IT	8	12	51.0%
LT	14	17	21.4%
LU	60	63	5.7%
LV	22	23	6.6%
MT	1	1	27.2%
NL	26	27	5.8%
PL	10	10	5.2%
PT	12	14	14.6%
RO	3	4	4.3%
SE	43	45	4.8%
SI	6	7	3.8%
SK	77	81	4.1%
UK	91	95	3.8%
EU-28	15	16	12.1%

**Table 11.** Average farm size (ha) in 2010 and 2013, and the change between 2010 and 2013 (Source: Eurostat, June 2017).

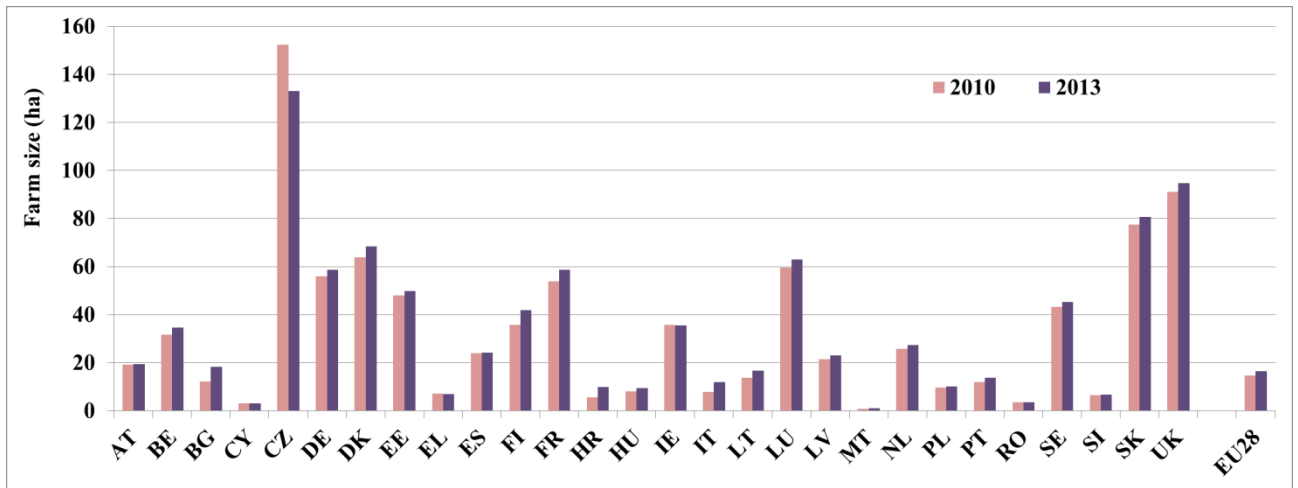


Figure 22 Average farm size (ha) in 2010 and 2013 (Source: Eurostat, June 2017).

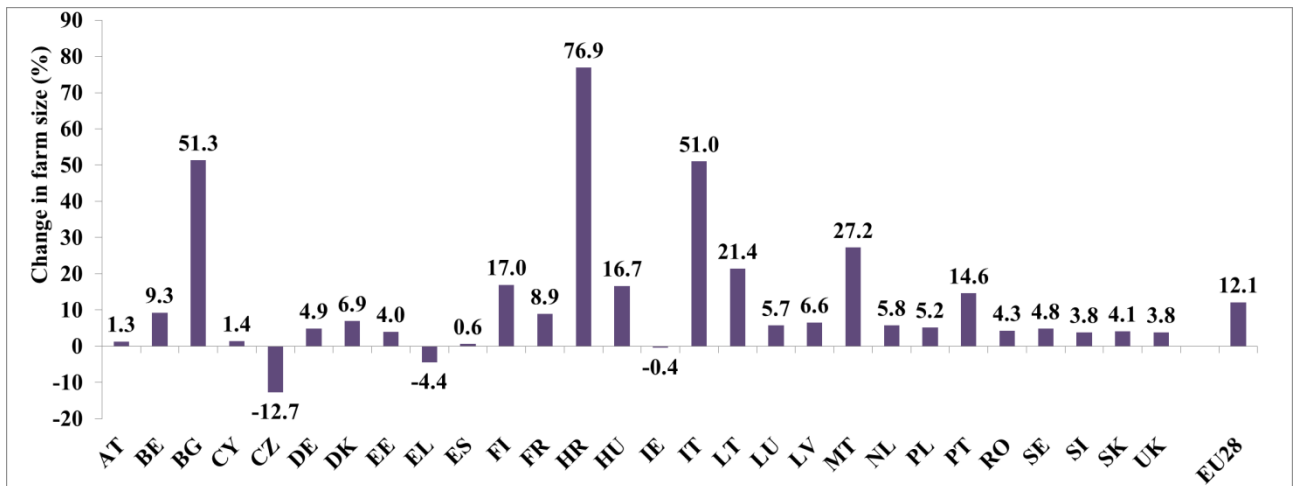
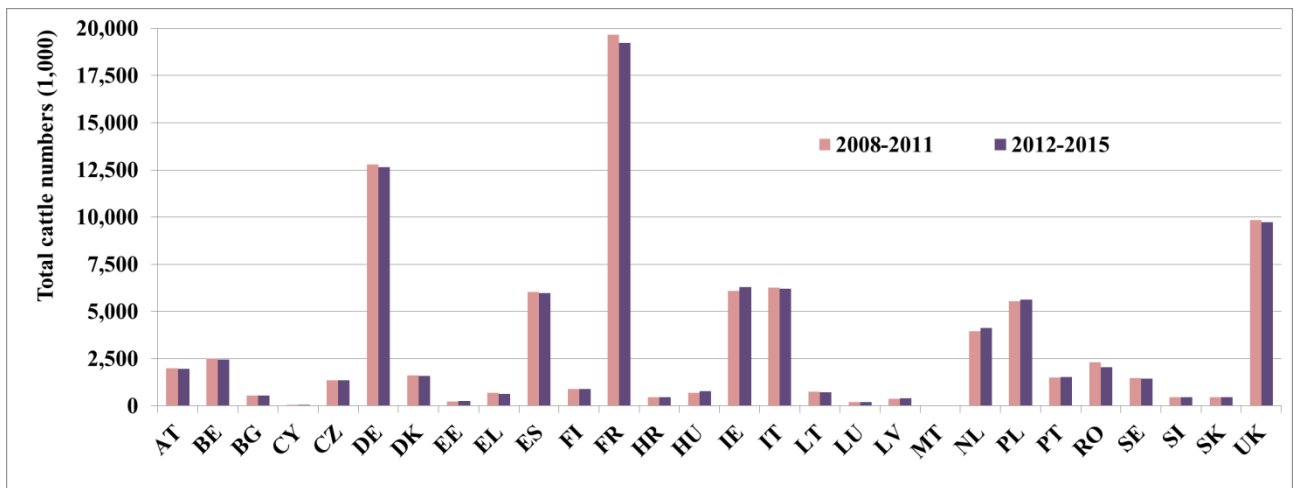


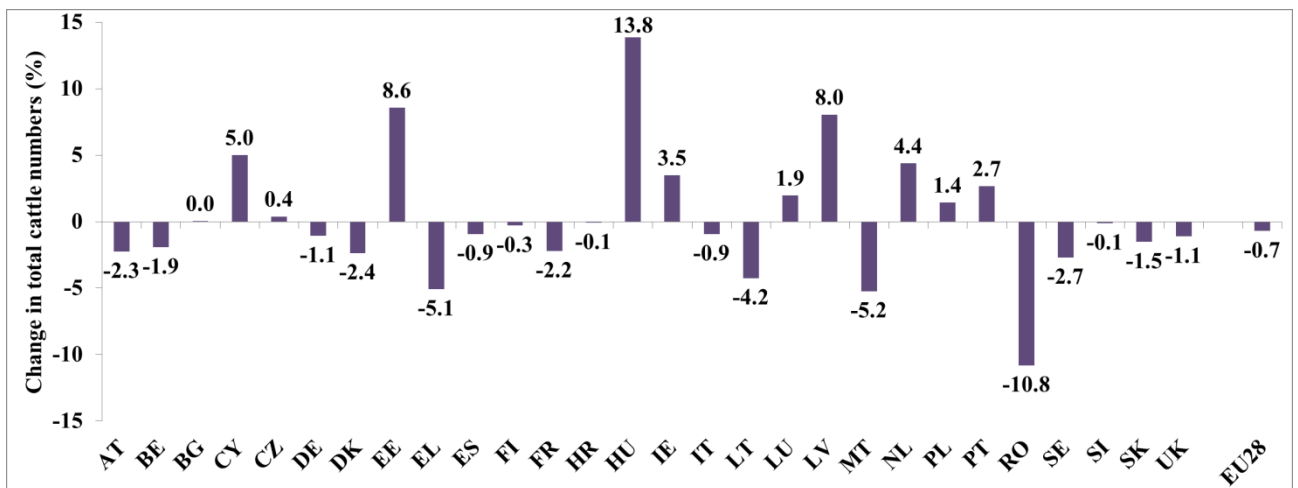
Figure 23 Change in average farm size (%) between 2010 and 2013 (Source: Eurostat, June 2017).

	2008	2009	2010	2011	2012	2013	2014	2015	08-11	12-15	Change
AT	1,997	2,026	2,013	1,977	1,956	1,958	1,961	1,958	2,003	1,958	-2.3%
BE	2,538	2,535	2,510	2,472	2,438	2,441	2,477	2,503	2,514	2,465	-1.9%
BG	574	548	554	568	535	586	562	561	561	561	0.0%
CY	56	54	55	57	57	57	60	59	55	58	5.0%
CZ	1,358	1,356	1,319	1,339	1,321	1,332	1,373	1,366	1,343	1,348	0.4%
DE	12,988	12,897	12,706	12,528	12,507	12,686	12,742	12,635	12,780	12,643	-1.1%
DK	1,599	1,621	1,630	1,612	1,607	1,583	1,553	1,566	1,616	1,577	-2.4%
EE	238	235	236	238	246	261	265	256	237	257	8.6%
EL	682	675	679	681	685	653	659	582	679	645	-5.1%
ES	6,020	6,082	6,075	5,923	5,813	5,802	6,079	6,183	6,025	5,969	-0.9%
FI	907	908	909	903	901	903	907	903	907	904	-0.3%
FR	20,028	19,842	19,599	19,129	19,052	19,129	19,271	19,406	19,650	19,215	-2.2%
HR	454	447	444	447	452	442	441	455	448	448	-0.1%
HU	701	700	682	697	760	782	802	821	695	791	13.8%
IE	6,304	6,232	5,918	5,925	6,253	6,309	6,243	6,422	6,095	6,307	3.5%
IT	6,486	6,447	5,832	6,252	6,252	6,249	6,125	6,156	6,254	6,196	-0.9%
LT	771	759	748	752	729	714	737	723	758	725	-4.2%
LU	196	195	194	188	188	198	201	201	193	197	1.9%
LV	380	378	379	381	393	406	422	419	380	410	8.0%
MT	18	16	15	15	16	15	15	15	16	15	-5.2%
NL	3,996	3,998	3,960	3,912	3,985	4,090	4,169	4,315	3,967	4,140	4.4%
PL	5,564	5,590	5,562	5,501	5,520	5,590	5,660	5,763	5,554	5,633	1.4%
PT	1,495	1,447	1,503	1,519	1,498	1,471	1,549	1,606	1,491	1,531	2.7%
RO	2,684	2,512	2,001	1,989	2,009	2,022	2,069	2,092	2,296	2,048	-10.8%
SE	1,505	1,482	1,475	1,450	1,444	1,444	1,436	1,428	1,478	1,438	-2.7%
SI	470	473	470	462	460	461	468	484	469	468	-0.1%
SK	488	472	467	463	471	468	466	457	473	465	-1.5%
UK	9,911	9,901	9,896	9,675	9,749	9,682	9,693	9,816	9,846	9,735	-1.1%
EU-28	90,408	89,829	87,831	87,054	87,297	87,734	88,406	89,152	88,781	88,147	-0.7%

**Table 12.** Number of total cattle (1,000) in the period 2008-2015, and the change between the periods 2008-2011 and 2012-2015 (Source: Eurostat, June 2017).



**Figure 24** Average number of total cattle (1,000) in the reporting periods 2008-2011 and 2012-2015 (Source: Eurostat, June 2017).

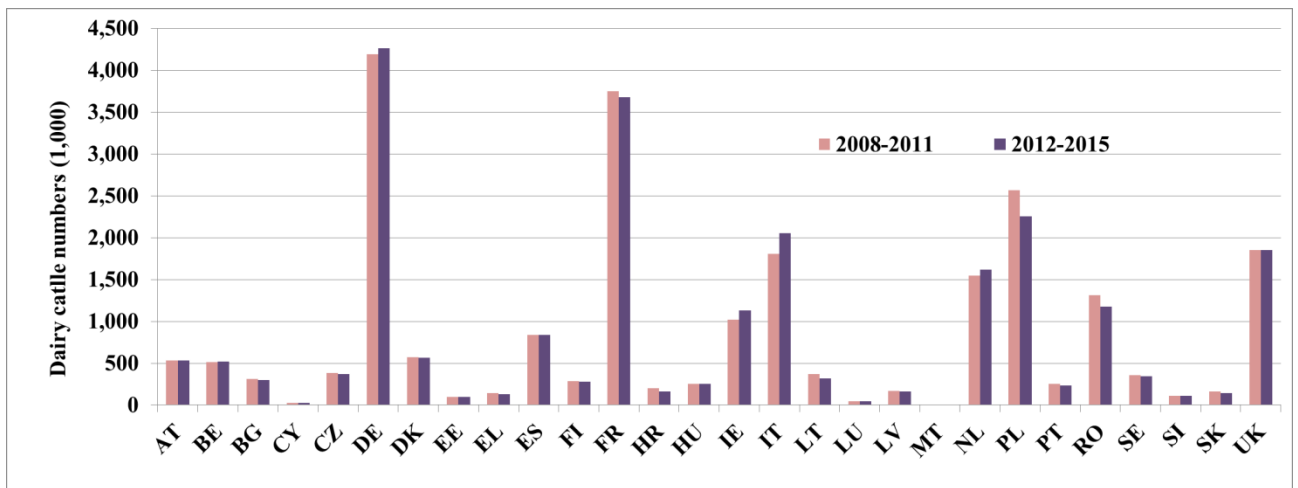


**Figure 25** Change in the number of total cattle (%) between the reporting periods 2008-2011 and 2012-2015 (Source: Eurostat, June 2017).

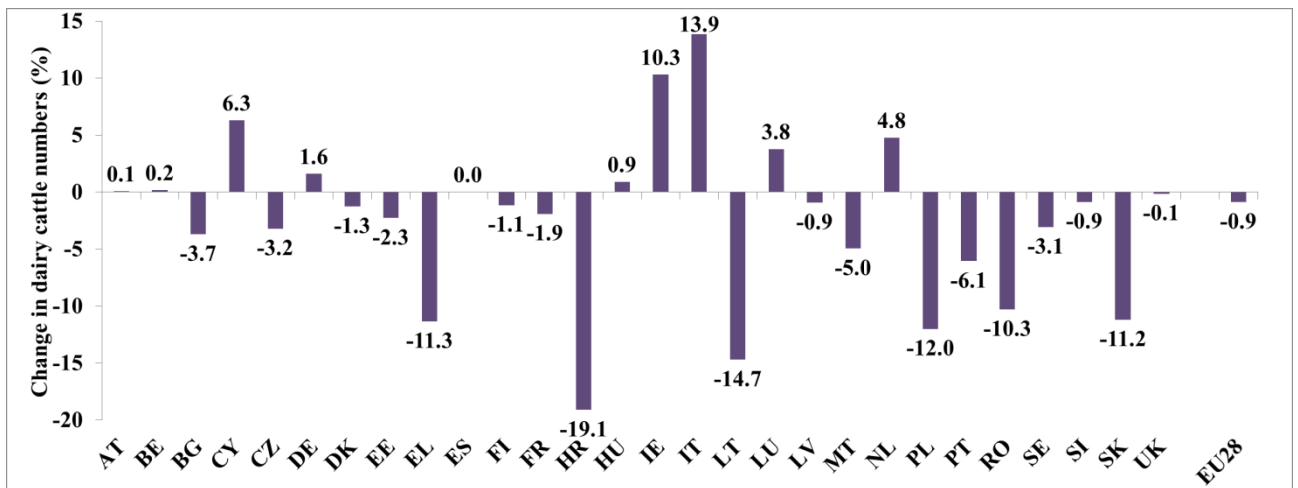


	2008	2009	2010	2011	2012	2013	2014	2015	08-11	12-15	Change
AT	530	533	533	527	523	530	538	534	531	531	0.1%
BE	518	518	518	511	504	516	519	529	516	517	0.2%
BG	315	297	314	313	294	313	302	283	310	298	-3.7%
CY	24	23	23	24	24	25	25	26	24	25	6.3%
CZ	400	384	375	374	367	375	372	369	383	371	-3.2%
DE	4,229	4,169	4,182	4,190	4,190	4,268	4,296	4,285	4,193	4,260	1.6%
DK	566	574	573	579	579	567	547	570	573	566	-1.3%
EE	100	97	97	96	97	98	96	91	97	95	-2.3%
EL	154	145	144	130	132	130	135	111	143	127	-11.3%
ES	888	828	845	798	827	844	845	844	840	840	0.0%
FI	288	286	284	282	280	282	283	282	285	282	-1.1%
FR	3,857	3,748	3,718	3,664	3,644	3,697	3,699	3,661	3,747	3,675	-1.9%
HR	213	212	207	185	181	168	159	152	204	165	-19.1%
HU	263	248	239	252	255	250	255	251	251	253	0.9%
IE	1,024	1,022	1,007	1,036	1,060	1,082	1,128	1,240	1,022	1,128	10.3%
IT	1,831	1,878	1,746	1,755	2,009	2,075	2,069	2,057	1,803	2,052	13.9%
LT	395	375	360	350	331	316	314	301	370	315	-14.7%
LU	46	46	46	44	45	48	47	49	46	47	3.8%
LV	170	166	164	164	165	165	166	162	166	164	-0.9%
MT	7	7	6	6	6	6	7	6	7	6	-5.0%
NL	1,587	1,562	1,518	1,504	1,541	1,597	1,610	1,717	1,543	1,616	4.8%
PL	2,697	2,585	2,529	2,446	2,346	2,299	2,248	2,134	2,564	2,257	-12.0%
PT	265	255	243	242	237	231	234	243	251	236	-6.1%
RO	1,483	1,419	1,179	1,170	1,163	1,169	1,188	1,191	1,313	1,178	-10.3%
SE	366	354	349	348	346	346	344	337	354	343	-3.1%
SI	113	113	109	109	111	110	108	113	111	110	-0.9%
SK	174	163	159	154	150	145	143	139	162	144	-11.2%
UK	1,903	1,864	1,847	1,800	1,786	1,817	1,883	1,918	1,854	1,851	-0.1%
EU-28	24,406	23,871	23,314	23,053	23,193	23,468	23,559	23,595	23,661	23,454	-0.9%

**Table 13.** Number of dairy cattle (1,000) in the period 2008-2015, and the change between the periods 2008-2011 and 2012-2015 (Source: Eurostat, June 2017).



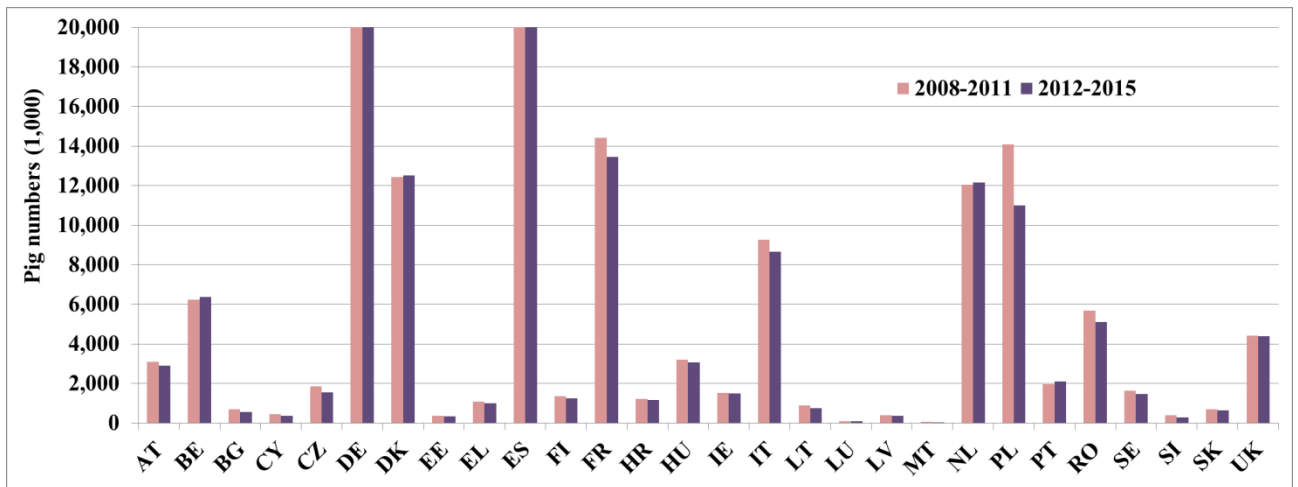
**Figure 26** Average number of dairy cattle (1,000) in the reporting periods 2008-2011 and 2012-2015 (Source: Eurostat, June 2017).



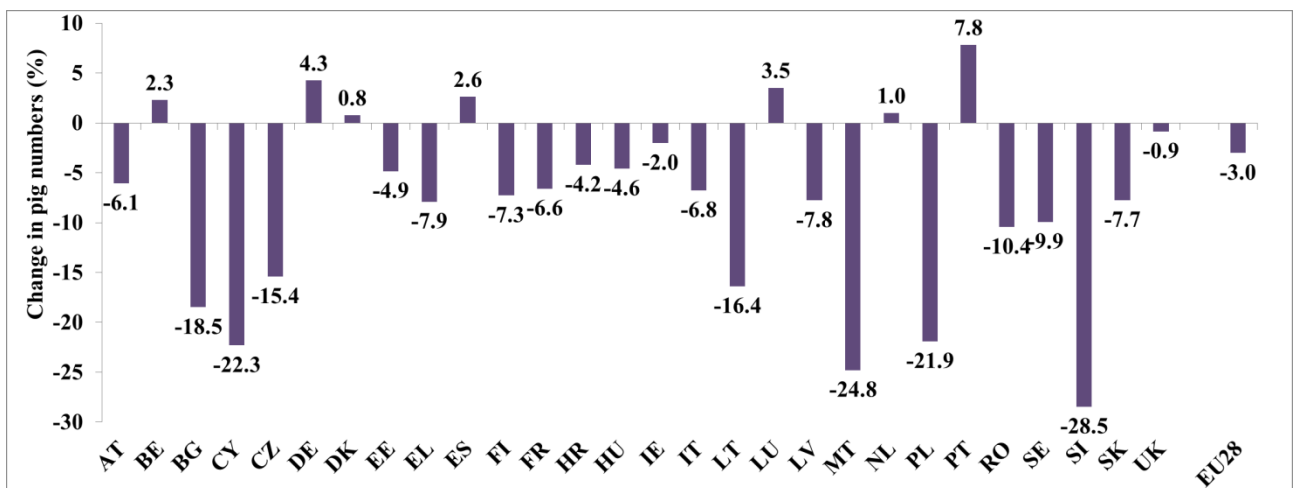
**Figure 27** Change in the number of dairy cattle (%) between the reporting periods 2008-2011 and 2012-2015 (Source: Eurostat, June 2017).

	2008	2009	2010	2011	2012	2013	2014	2015	08-11	12-15	Change
AT	3,064	3,137	3,134	3,005	2,983	2,896	2,868	2,845	3,085	2,898	-6.1%
BE	6,208	6,228	6,176	6,328	6,448	6,351	6,350	6,364	6,235	6,378	2.3%
BG	784	730	664	608	531	586	553	600	696	568	-18.5%
CY	465	463	464	439	395	358	342	328	458	356	-22.3%
CZ	2,135	1,914	1,846	1,487	1,534	1,548	1,607	1,555	1,845	1,561	-15.4%
DE	26,719	26,841	26,901	27,402	28,331	28,133	28,339	27,652	26,966	28,114	4.3%
DK	12,195	12,873	12,293	12,348	12,281	12,402	12,709	12,702	12,427	12,524	0.8%
EE	365	365	372	366	375	359	358	305	367	349	-4.9%
EL	1,061	1,073	1,087	1,120	1,044	1,031	1,046	877	1,085	1,000	-7.9%
ES	26,290	25,343	25,704	25,635	25,250	25,495	26,568	28,367	25,743	26,420	2.6%
FI	1,400	1,353	1,340	1,290	1,271	1,258	1,223	1,239	1,346	1,248	-7.3%
FR	14,810	14,552	14,279	13,967	13,778	13,428	13,300	13,307	14,402	13,453	-6.6%
HR	1,104	1,250	1,231	1,233	1,182	1,110	1,156	1,167	1,204	1,154	-4.2%
HU	3,383	3,247	3,169	3,044	2,989	3,004	3,136	3,124	3,211	3,063	-4.6%
IE	1,511	1,502	1,500	1,553	1,493	1,469	1,506	1,475	1,517	1,486	-2.0%
IT	9,252	9,157	9,321	9,351	8,662	8,561	8,676	8,675	9,270	8,643	-6.8%
LT	897	928	929	790	808	755	714	688	886	741	-16.4%
LU	78	89	89	91	89	90	93	89	87	90	3.5%
LV	384	377	390	375	355	368	349	334	381	352	-7.8%
MT	66	66	69	46	45	49	47	44	62	46	-24.8%
NL	11,735	12,108	12,206	12,103	12,104	12,013	12,065	12,453	12,038	12,159	1.0%
PL	14,242	14,253	14,776	13,056	11,132	10,994	11,266	10,590	14,082	10,996	-21.9%
PT	1,955	1,945	1,917	1,985	2,024	2,014	2,127	2,247	1,950	2,103	7.8%
RO	6,174	5,793	5,428	5,364	5,234	5,180	5,042	4,927	5,690	5,096	-10.4%
SE	1,703	1,616	1,607	1,568	1,474	1,480	1,458	1,435	1,623	1,462	-9.9%
SI	432	415	396	347	296	288	282	271	398	284	-28.5%
SK	749	741	687	580	631	637	642	633	689	636	-7.7%
UK	4,550	4,423	4,385	4,326	4,216	4,383	4,510	4,422	4,421	4,383	-0.9%
EU-28	153,707	152,780	152,361	149,809	146,955	146,242	148,331	148,716	152,164	147,561	-3.0%

**Table 14.** Number of pigs (1,000) in the period 2008-2015, and the change in number between the periods 2008-2011 and 2012-2015 (Source: Eurostat, June 2017).



**Figure 28** Average number of pigs (1,000) in the reporting periods 2008-2011 and 2012-2015 (Source: Eurostat, June 2017).



**Figure 29** Change in the number of pigs (%) between the reporting periods 2008-2011 and 2012-2015 (Source: Eurostat, June 2017).

	2010	2013	Change
AT	14,620	15,740	7.7%
BE	34,370	35,100	2.1%
BG	17,490	14,280	-18.4%
CY	3,220	1,850	-42.5%
CZ	25,320	25,340	0.1%
DE	128,900	177,340	37.6%
DK	18,740	19,430	3.7%
EE	1,940	2,170	11.9%
EL	36,760	27,880	-24.2%
ES	200,910	205,820	2.4%
FI	9,310	11,980	28.7%
FR	296,130	297,070	0.3%
HR	13,470	13,630	1.2%
HU	48,700	41,100	-15.6%
IE	10,930	10,130	-7.3%
IT	167,520	164,900	-1.6%
LT	8,600	9,330	8.5%
LU	90	120	33.3%
LV	5,160	5,030	-2.5%
MT	980	920	-6.1%
NL	103,620	99,430	-4.0%
PL	174,300	149,200	-14.4%
PT	35,350	28,620	-19.0%
RO	79,190	76,300	-3.6%
SE	14,290	16,620	16.3%
SI	4,900	4,870	-0.6%
SK	12,660	11,360	-10.3%
UK	162,560	155,510	-4.3%
EU-28	1,630,030	1,621,070	-0.5%

**Table 15.** Number of poultry (1,000) in 2010 and 2013, and the change between the years 2010 and 2013 (Source: Eurostat, June 2017).

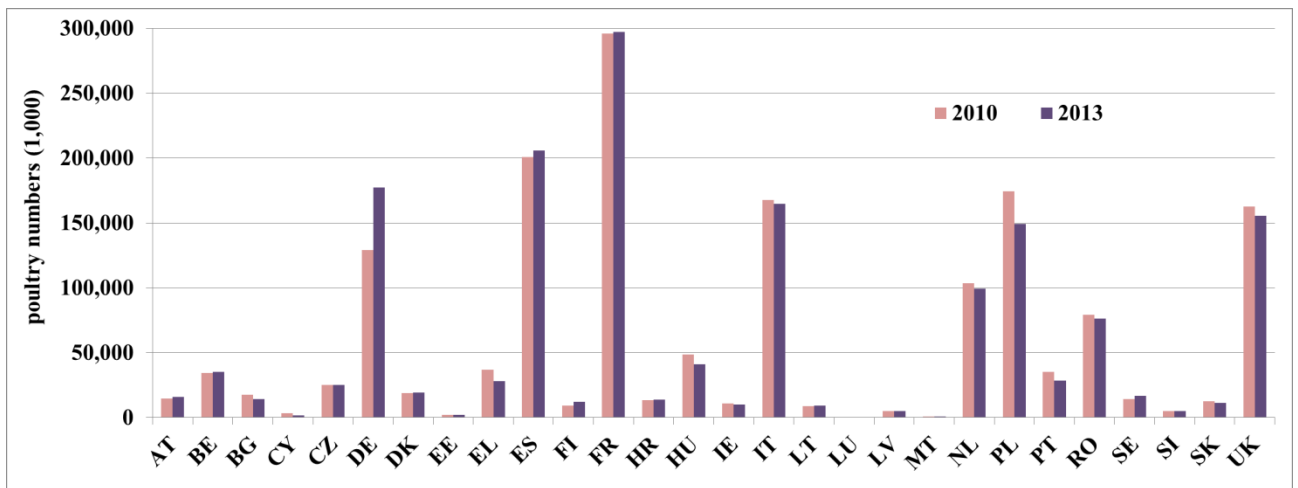


Figure 30 Average number of poultry (1,000) in 2010 and 2013 (Source: Eurostat, June 2017).

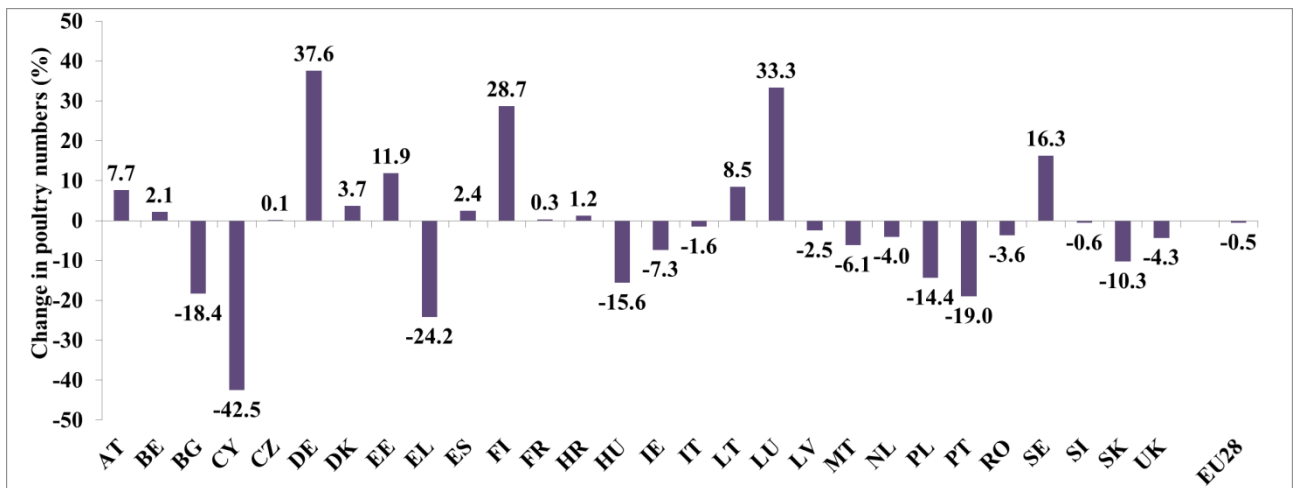
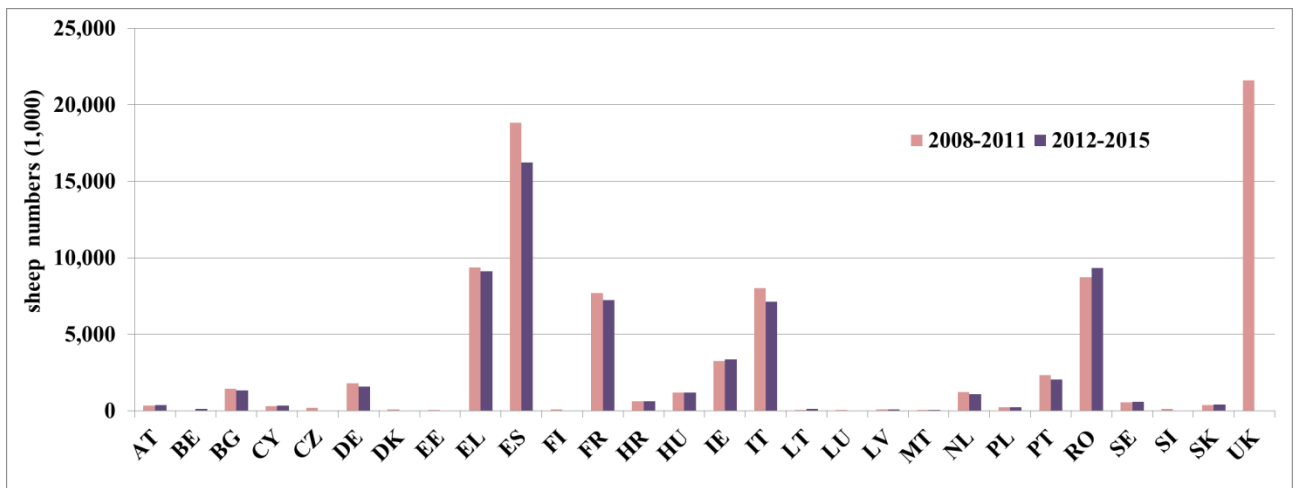


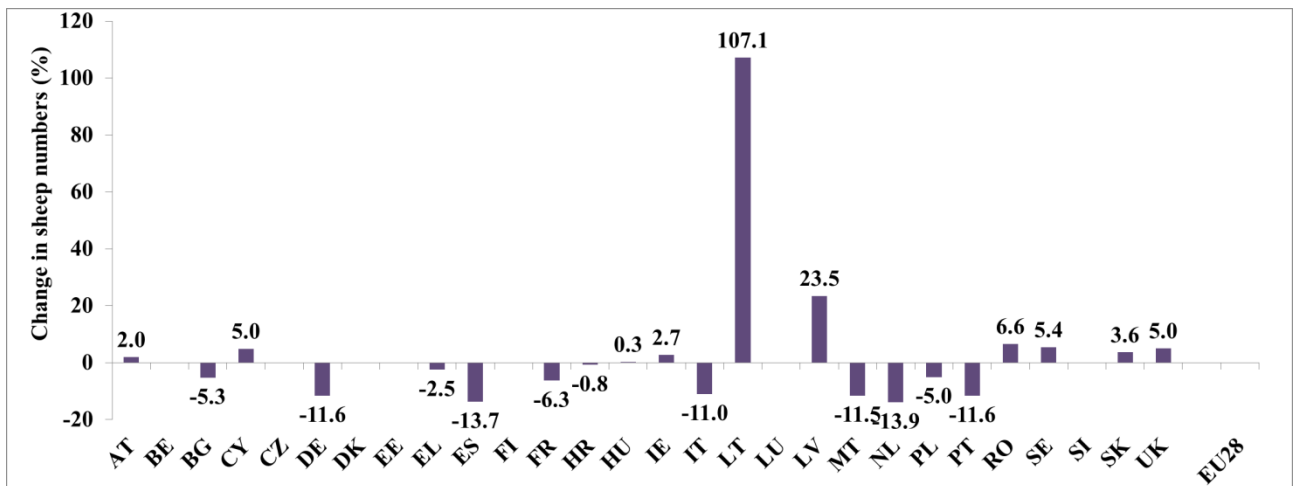
Figure 31 Change in the number of poultry (%) between 2010 and 2013 (Source: Eurostat, June 2017).

	2008	2009	2010	2011	2012	2013	2014	2015	08-11	12-15	Change
AT	333	345	358	361	365	357	349	354	349	356	2.0%
BE					119	117				118	
BG	1,475	1,400	1,368	1,455	1,362	1,370	1,335	1,332	1,424	1,350	-5.3%
CY	267	300	329	356	347	313	322	332	313	329	5.0%
CZ	183	197							190		
DE	1,920	1,852	1,800	1,658	1,641	1,570	1,601	1,580	1,807	1,598	-11.6%
DK	90	:							90		
EE	62								62		
EL	8,994	8,859	9,791	9,781	9,213	9,356	9,072	8,852	9,356	9,123	-2.5%
ES	19,952	19,718	18,552	17,003	16,339	16,119			18,806	16,229	-13.7%
FI	94								94		
FR	7,715	7,528	7,955	7,621	7,453	7,193	7,168	7,057	7,705	7,218	-6.3%
HR	643	619	630	639	679	620	605	608	633	628	-0.8%
HU	1,236	1,223	1,181	1,120	1,185	1,214	1,185	1,190	1,190	1,194	0.3%
IE	3,423	3,183	3,122	3,321	3,430	3,324	3,325	3,325	3,262	3,351	2.7%
IT	8,175	8,013	7,900	7,943	7,016	7,182	7,166	7,149	8,008	7,128	-11.0%
LT	48	53	59	60	83	100	124	147	55	113	107.1%
LU	8	9	8						8		
LV	67	71	77	80	84	85	93	102	74	91	23.5%
MT	13	13	12	12	12	11	11	11	13	11	-11.5%
NL	1,545	1,091	1,211	1,113	1,093	1,074	1,070	1,032	1,240	1,067	-13.9%
PL	270	224	214	213	219				230	219	-5.0%
PT	2,558	2,368	2,226	2,170	2,092	2,074	2,033	2,043	2,331	2,060	-11.6%
RO	8,882	9,142	8,417	8,533	8,834	9,136	9,518	9,810	8,743	9,324	6.6%
SE	521	540	565	623	611	577	589	595	562	593	5.4%
SI	139	138							138		
SK	362	377	394	394	410	400	391	381	382	396	3.6%
UK	21,856	21,343	21,295	21,951	22,991	22,027	22,687	23,103	21,611	22,702	5.0%
EU-28											

**Table 16.** Number of sheep (1,000) in the period 2008-2015, and the change in number between the periods 2008-2011 and 2012-2015 (Source: Eurostat, June 2017).



**Figure 32** Average number of sheep (1,000) in the reporting periods 2008-2011 and 2012-2015 (Source: Eurostat, June 2017).



**Figure 33** Change in the number of sheep (%) between the reporting periods 2008-2011 and 2012-2015 (Source: Eurostat, June 2017).



	2010	2013	Change
AT	2,517	2,439	-3.1%
BE	3,799	3,584	-5.6%
BG	1,149	1,025	-10.8%
CY	201	175	-13.1%
CZ	1,722	1,728	0.3%
DE	17,793	18,407	3.5%
DK	4,919	4,133	-16.0%
EE	306	310	1.3%
EL	2,407	2,143	-11.0%
ES	14,831	14,502	-2.2%
FI	1,121	1,146	2.2%
FR	22,674	21,871	-3.5%
HR	1,020	864	-15.3%
HU	2,484	2,259	-9.0%
IE	5,787	5,929	2.5%
IT	9,912	9,374	-5.4%
LT	900	839	-6.8%
LU	168	165	-1.3%
LV	475	486	2.4%
MT	42	35	-16.1%
NL	6,712	6,602	-1.6%
PL	10,377	9,165	-11.7%
PT	2,206	2,036	-7.7%
RO	5,444	4,975	-8.6%
SE	1,752	1,712	-2.3%
SI	518	488	-5.9%
SK	668	645	-3.5%
UK	13,308	13,282	-0.2%
EU-28	135,212	130,320	-3.6%

**Table 17.** Number of Livestock Units (1,000) in 2010 and 2013, and the change between the years 2010 and 2013 (Source: Eurostat, June 2017).

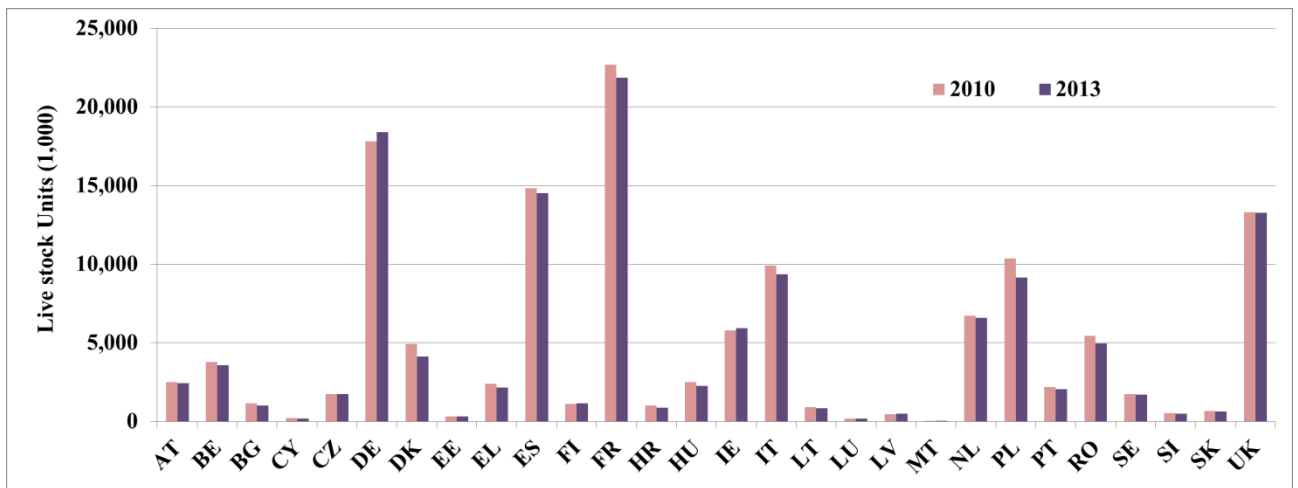


Figure 34 Average number of Livestock Units (1,000) in 2010 and 2013 (Source: Eurostat, June 2017).

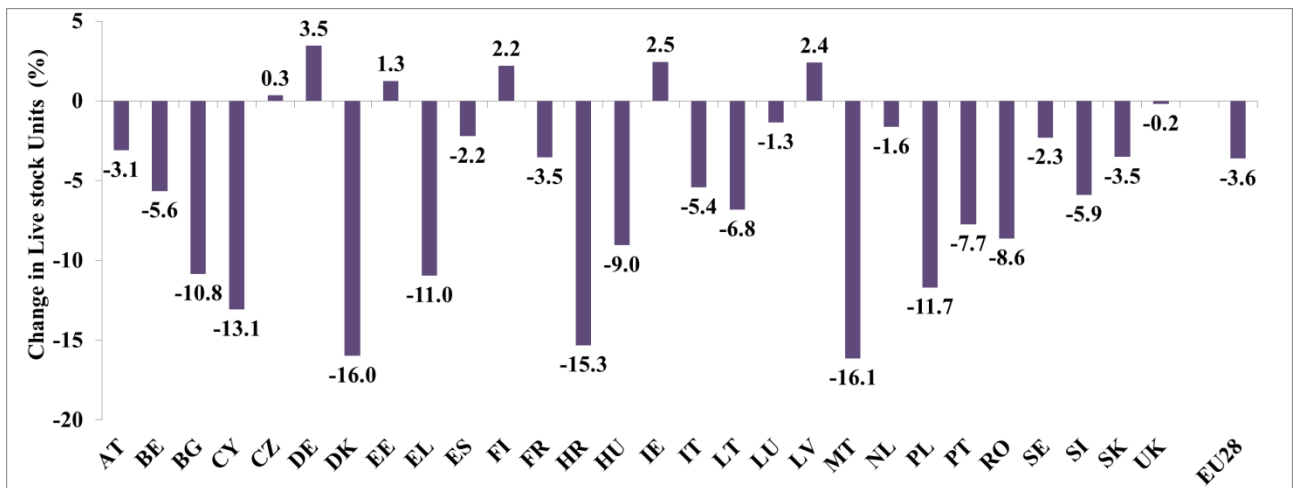
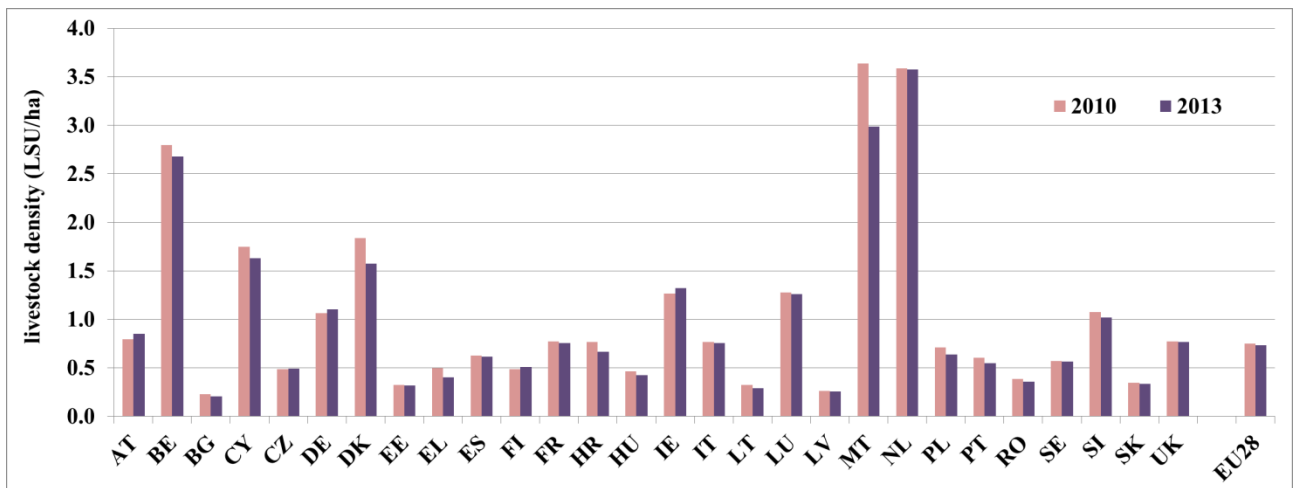


Figure 35 Change in the number of Livestock Units (%) between 2010 and 2013 (Source: Eurostat, June 2017).

	2010	2013	Change
AT	0.80	0.85	7.2%
BE	2.80	2.68	-4.3%
BG	0.23	0.21	-9.8%
CY	1.75	1.63	-6.9%
CZ	0.49	0.49	0.4%
DE	1.07	1.10	3.5%
DK	1.84	1.57	-14.4%
EE	0.32	0.32	-0.5%
EL	0.50	0.40	-18.9%
ES	0.63	0.62	-1.3%
FI	0.49	0.51	3.7%
FR	0.77	0.75	-2.4%
HR	0.76	0.66	-13.2%
HU	0.46	0.42	-9.0%
IE	1.27	1.32	4.5%
IT	0.77	0.75	-1.9%
LT	0.32	0.29	-10.7%
LU	1.28	1.26	-1.2%
LV	0.26	0.26	-1.5%
MT	3.64	2.99	-17.9%
NL	3.58	3.57	-0.3%
PL	0.71	0.64	-10.5%
PT	0.60	0.55	-9.3%
RO	0.38	0.36	-7.0%
SE	0.57	0.56	-1.1%
SI	1.07	1.02	-5.1%
SK	0.35	0.33	-3.9%
UK	0.77	0.77	-0.3%
EU-28	0.75	0.73	-2.9%

**Table 18.** Livestock density (LU per ha UAA) in 2010 and 2013, and the change between the years 2010 and 2013 (Source: Eurostat, June 2017).



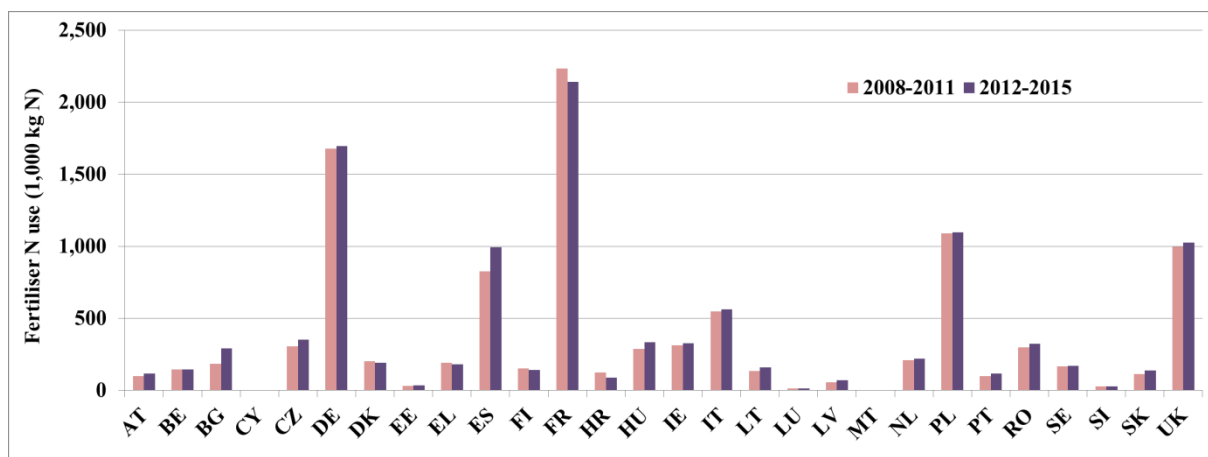
**Figure 36** Average livestock density (LU per ha UAA) in 2010 and 2013 (Source: Eurostat, June 2017). LU = LiveStock Unit; UAA=Utilised Agricultural Area.



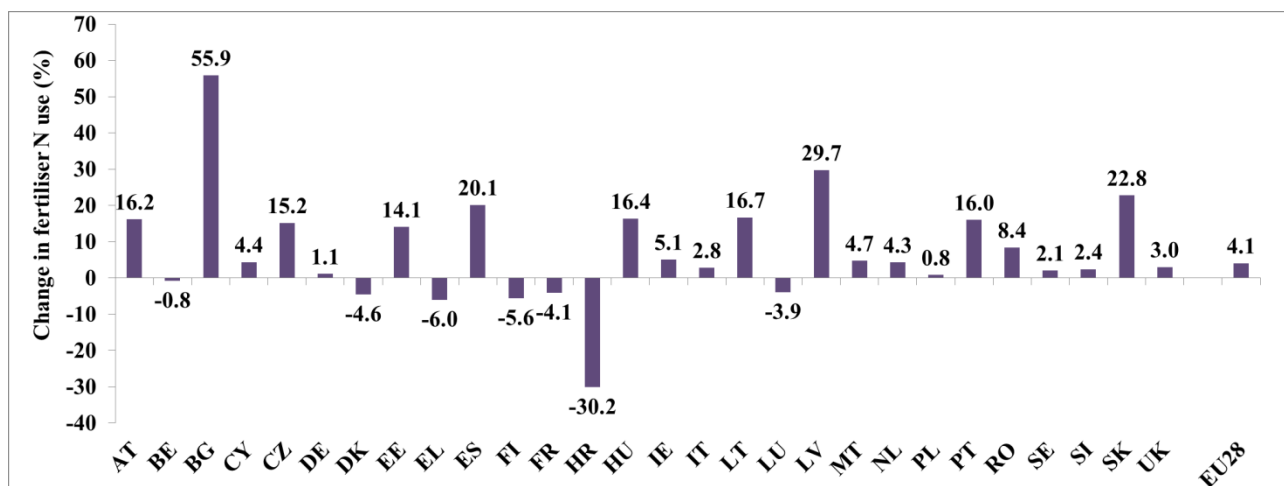
**Figure 37** Change in livestock density (%) between 2010 and 2013 (Source: Eurostat, June 2017).

	2008	2009	2010	2011	2012	2013	2014	2015	08-11	12-15	Change
AT	108,502	89,132	104,762	98,161	107,895	110,626	121,562	125,323	100,139	116,352	16.2%
BE	134,648	147,412	151,341	148,562	144,685	143,618	145,382	143,592	145,491	144,319	-0.8%
BG	173,917	177,553	199,083	192,357	235,386	258,856	322,004	341,608	185,728	289,464	55.9%
CY	46	4,312	4,276	5,086	4,881	3,147	3,147	3,147	3,430	3,581	4.4%
CZ	341,628	253,759	270,256	352,745	349,008	331,616	325,667	397,136	304,597	350,857	15.2%
DE	1,807,176	1,550,625	1,569,045	1,786,485	1,640,414	1,648,828	1,675,289	1,822,791	1,678,333	1,696,831	1.1%
DK	220,674	200,412	190,072	197,162	187,164	193,688	186,971	203,631	202,080	192,864	-4.6%
EE	35,455	27,328	28,628	29,803	32,978	33,659	35,806	35,806	30,304	34,562	14.1%
EL	201,000	175,000	213,000	181,394	175,445	182,534	180,931	185,123	192,599	181,008	-6.0%
ES	739,757	781,069	940,984	846,697	843,410	961,507	1,101,895	1,068,103	827,127	993,729	20.1%
FI	162,905	136,009	156,523	146,189	138,900	138,136	147,373	143,479	150,407	141,972	-5.6%
FR	2,425,221	2,098,801	2,080,333	2,332,390	2,024,929	2,143,821	2,190,930	2,208,168	2,234,186	2,141,962	-4.1%
HR	170,152	90,793	109,345	125,015	106,884	77,920	73,680	87,428	123,826	86,478	-30.2%
HU	294,309	274,944	281,428	301,825	312,940	342,949	326,753	358,421	288,127	335,266	16.4%
IE	308,960	306,806	337,574	295,795	296,536	353,044	331,782	330,959	312,284	328,080	5.1%
IT	659,922	518,778	496,637	515,966	683,566	546,542	505,126	517,854	547,826	563,272	2.8%
LT	118,300	134,400	143,200	147,000	150,000	155,000	162,000	166,611	135,725	158,403	16.7%
LU	13,329	13,384	13,766	14,446	13,675	13,366	12,714	13,007	13,731	13,191	-3.9%
LV	47,492	51,877	59,458	59,803	65,204	69,696	72,935	75,820	54,658	70,914	29.7%
MT	594	615	636	640	644	649	653	657	621	651	4.7%
NL	220,712	211,350	205,211	200,420	199,520	216,026	213,200	244,893	209,423	218,410	4.3%
PL	1,142,273	1,095,441	1,027,430	1,091,065	1,094,673	1,194,757	1,098,455	1,003,597	1,089,052	1,097,871	0.8%
PT	105,131	97,293	100,249	95,088	106,864	110,643	122,842	121,028	99,440	115,344	16.0%
RO	279,886	296,055	305,757	313,333	289,963	344,468	303,562	357,352	298,758	323,836	8.4%
SE	186,500	142,400	168,000	169,800	148,100	161,100	181,100	190,200	166,675	170,125	2.1%
SI	25,039	28,202	27,486	27,134	26,300	27,263	28,612	28,319	26,965	27,624	2.4%
SK	121,435	96,334	106,513	120,555	127,797	140,665	143,074	134,546	111,209	136,521	22.8%
UK	1,000,999	948,022	1,016,417	1,022,082	1,000,196	999,002	1,060,000	1,049,000	996,880	1,027,050	3.0%
EU-28	11,045,962	9,948,106	10,307,410	10,816,998	10,507,957	10,903,126	11,073,445	11,357,599	10,529,619	10,960,532	4.1%

**Table 19.** Fertiliser nitrogen use (1,000 kg N) in the period 2008-2015, and the change between the periods 2008-2011 and 2012-2015 (Source: Eurostat, June 2017).



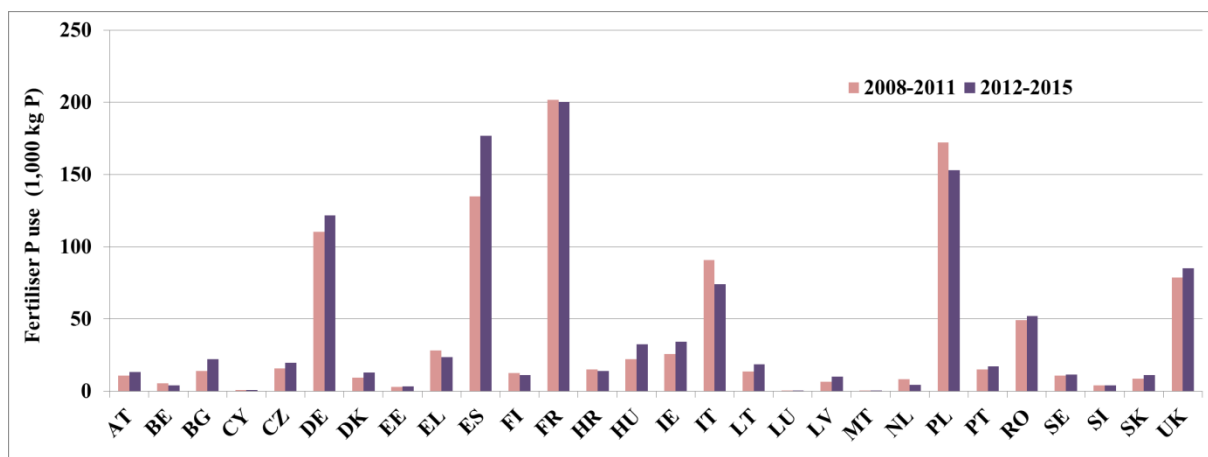
**Figure 38** Fertiliser nitrogen use (1,000 kg N) in the period 2008-2015 (Source: Eurostat, June 2017).



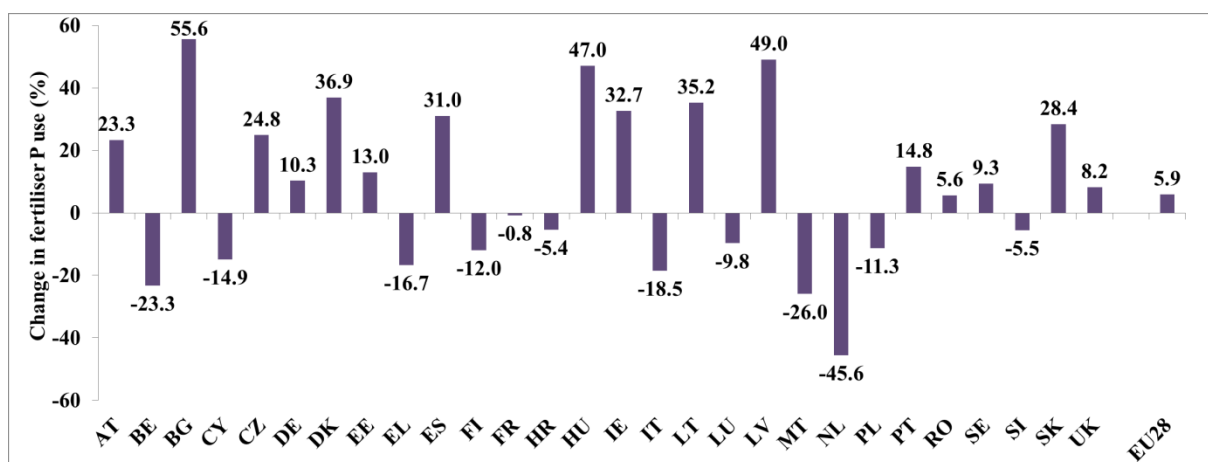
**Figure 39** Change in fertiliser nitrogen use (%) between the reporting periods 2008-2011 and 2012-2015 (Source: Eurostat, June 2017).

	2008	2009	2010	2011	2012	2013	2014	2015	08-11	12-15	Change
AT	13,808	7,256	12,527	9,947	12,301	14,234	14,110	13,058	10,885	13,426	23.3%
BE	6,400	4,600	5,600	4,738	4,738	4,807	3,359	3,468	5,335	4,093	-23.3%
BG	13,342	13,387	17,043	12,902	20,798	11,656	28,144	27,573	14,169	22,043	55.6%
CY	1,000	1,000	1,000	1,000	1,000	801	801	801	1,000	851	-14.9%
CZ	24,097	7,585	13,654	17,304	18,713	18,201	20,070	21,221	15,660	19,551	24.8%
DE	138,274	76,122	102,675	125,025	107,880	124,073	123,999	131,503	110,524	121,864	10.3%
DK	7,000	11,000	10,000	10,000	10,000	13,601	13,985	14,430	9,500	13,004	36.9%
EE	4,187	2,471	2,671	2,680	2,955	3,129	3,775	3,708	3,002	3,392	13.0%
EL	28,000	33,000	29,000	23,000	24,000	25,523	22,547	22,076	28,250	23,537	-16.7%
ES	118,576	115,360	147,495	158,350	164,427	189,014	174,028	179,784	134,945	176,813	31.0%
FI	16,239	10,784	12,599	11,046	10,600	11,184	11,845	10,983	12,667	11,153	-12.0%
FR	282,425	129,142	177,025	218,428	189,633	217,184	206,798	187,054	201,755	200,167	-0.8%
HR	21,291	8,790	15,763	14,028	14,330	12,518	16,875	12,899	14,968	14,156	-5.4%
HU	27,431	19,232	19,976	22,113	25,735	33,247	35,987	35,530	22,188	32,625	47.0%
IE	26,350	20,231	28,235	28,107	27,421	36,986	35,584	36,551	25,731	34,136	32.7%
IT	85,000	114,000	87,000	78,000	73,000	74,775	73,664	75,149	91,000	74,147	-18.5%
LT	10,000	14,000	15,000	16,000	17,000	18,165	19,419	19,799	13,750	18,596	35.2%
LU	665	590	515	516	517	515	515	516	572	516	-9.8%
LV	6,632	5,831	6,840	7,640	8,648	10,670	10,204	10,633	6,736	10,039	49.0%
MT	31	57	59	57	54	31	33	33	51	38	-26.0%
NL	10,806	4,049	12,531	6,090	4,617	3,990	5,877	3,741	8,369	4,556	-45.6%
PL	193,133	163,852	154,183	178,318	161,883	168,295	148,917	132,544	172,372	152,910	-11.3%
PT	17,960	11,538	18,090	12,908	14,477	17,289	18,456	19,214	15,124	17,359	14.8%
RO	44,718	43,900	53,849	55,123	49,353	49,697	51,772	57,921	49,398	52,186	5.6%
SE	14,600	8,100	9,800	10,300	10,400	11,800	12,100	12,500	10,700	11,700	9.3%
SI	5,211	3,342	4,323	3,935	3,882	3,886	3,991	4,120	4,203	3,970	-5.5%
SK	11,201	7,936	7,041	8,569	10,592	11,095	11,920	11,004	8,687	11,153	28.4%
UK	93,873	56,324	80,338	83,831	82,085	84,704	87,761	85,577	78,592	85,032	8.2%
EU-28	1,222,250	893,479	1,044,832	1,119,955	1,071,039	1,171,070	1,156,536	1,133,390	1,070,129	1,133,009	5.9%

**Table 20.** Fertiliser phosphate use (1,000 kg P) in the period 2008-2015, and the change between the periods 2008-2011 and 2012-2015 (Source: Eurostat, June 2017).



**Figure 40** Fertiliser phosphate use (1,000 kg P) in the period 2008-2015 (Source: Eurostat, June 2017).

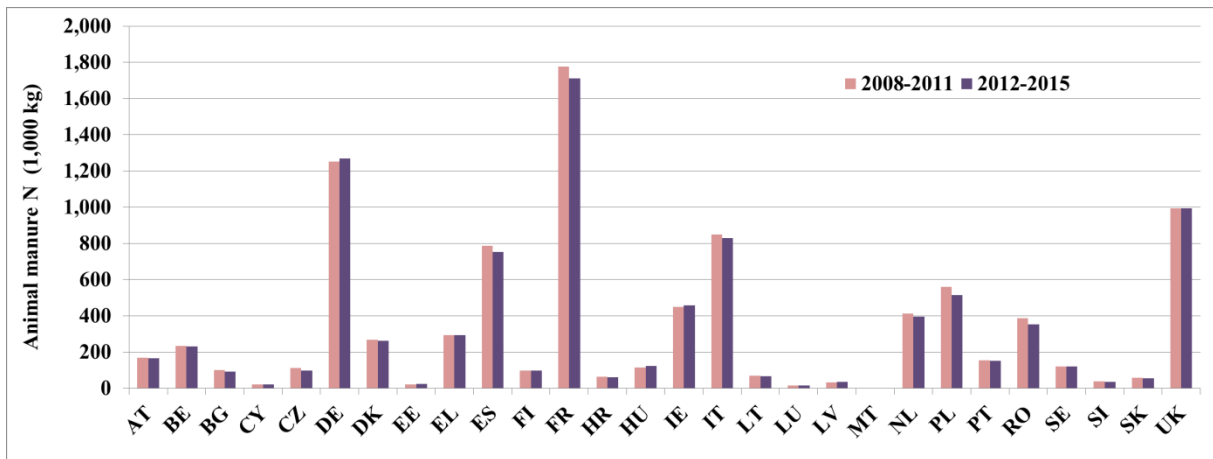


**Figure 41** Change in fertiliser phosphate use (%) between the reporting periods 2008-2011 and 2012-2015 (Source: Eurostat, June 2017).



	2008	2009	2010	2011	2012	2013	2014	2015	08-11	12-15	Change
AT	166,511	168,922	168,686	166,268	165,020	164,513	164,513		167,597	164,682	-1.7%
BE	233,639	234,607	237,137	233,621	232,281	233,855	229,547		234,751	231,894	-1.2%
BG	108,210	101,710	96,779	93,820	90,971	89,568	93,294		100,130	91,278	-8.8%
CY	22,212	21,699	22,591	22,251	21,207	19,465	19,465		22,188	20,046	-9.7%
CZ	122,155	113,757	108,635	103,985	100,750	99,937	92,415		112,133	97,701	-12.9%
DE	1,260,630	1,259,540	1,245,772	1,242,264	1,259,568	1,277,241			1,252,052	1,268,405	1.3%
DK	273,814	264,668	265,447	264,233	262,573	261,436	261,903		267,041	261,971	-1.9%
EE	21,595	21,421	21,862	22,282	22,428	23,003	23,067		21,790	22,833	4.8%
EL	290,237	295,536	294,859	294,251	293,626	294,540	293,226		293,721	293,797	0.0%
ES	797,419	789,751	788,069	776,614	755,122	743,789	757,237		787,963	752,049	-4.6%
FI	98,715	96,930	100,818	99,694	98,260	98,986	97,510		99,039	98,252	-0.8%
FR	1,801,167	1,786,305	1,777,207	1,741,960	1,705,149	1,711,695	1,720,119		1,776,660	1,712,321	-3.6%
HR	62,934	65,330	64,554	63,615	63,818	60,397	61,432		64,108	61,882	-3.5%
HU	116,579	110,289	112,172	116,767	120,754	121,220	124,750		113,952	122,241	7.3%
IE	458,236	454,666	443,858	439,061	452,976	462,299			448,955	457,638	1.9%
IT	856,561	859,131	838,415	839,779	827,222	836,298	826,324		848,472	829,948	-2.2%
LT	71,604	70,302	69,976	67,232	67,161	65,954	67,212		69,779	66,776	-4.3%
LU	14,908	15,006	15,328	14,974	14,651	14,930	15,144		15,054	14,908	-1.0%
LV	34,203	33,611	34,081	34,141	35,122	36,179	37,415		34,009	36,239	6.6%
MT	2,836	2,723	2,636	2,349	2,325	2,409	2,380		2,636	2,371	-10.0%
NL	418,306	405,901	423,833	405,541	382,499	393,739	408,670		413,395	394,969	-4.5%
PL	577,167	555,978	559,549	547,752	519,909	508,324	514,462		560,112	514,232	-8.2%
PT	156,248	156,344	155,698	155,173	153,447	146,841	150,441	154,371	155,866	151,275	-2.9%
RO	420,796	404,124	361,122	357,893	356,924	356,015	350,008		385,984	354,316	-8.2%
SE	124,041	122,074	120,492	118,860	118,138	120,505			121,367	119,322	-1.7%
SI	38,673	38,667	37,919	36,559	36,036	35,587	36,421		37,955	36,015	-5.1%
SK	59,107	59,211	58,270	55,711	57,336	56,476	53,544		58,075	55,785	-3.9%
UK	1,013,310	979,824	999,292	988,698	987,602	990,467	999,952		995,281	992,674	-0.3%
EU-28	9,621,813	9,488,027	9,425,057	9,305,348	9,202,875	9,225,668			9,460,061	9,214,272	-2.6%

**Table 21.** Animal manure nitrogen use (1,000 kg N) in the period 2008-2015, and the change between the periods 2008-2011 and 2012-2015 (Source: Eurostat, June 2017).



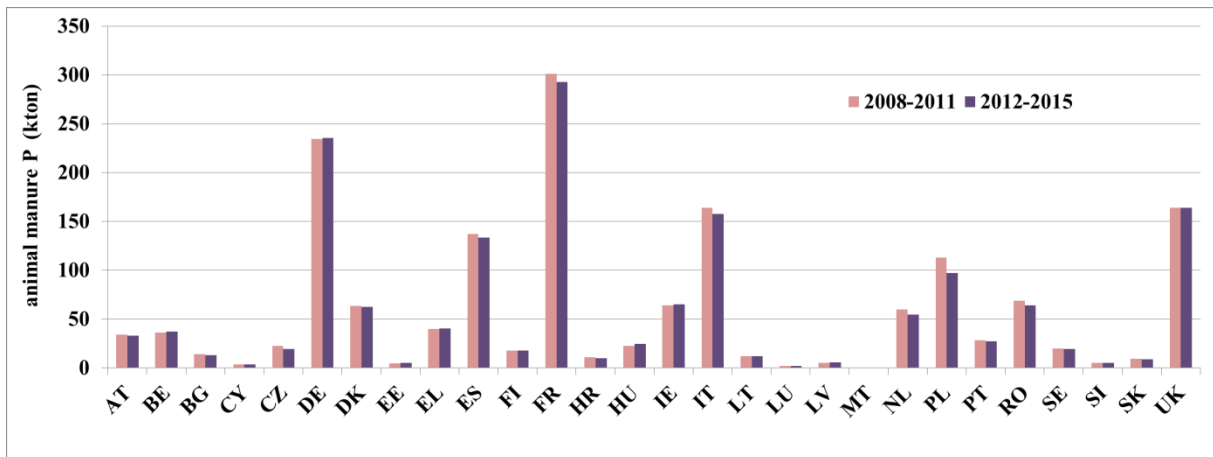
**Figure 42** Animal manure nitrogen use (1,000 kg N) in the period 2008-2015 (Source: Eurostat, June 2017).



**Figure 43** Change in animal manure nitrogen use (%) between the reporting periods 2008-2011 and 2012-2015 (Source: Eurostat, June 2017).

	2008	2009	2010	2011	2012	2013	2014	2015	08-11	12-15	Change
AT	33,897	34,452	34,386	33,629	33,359	33,140	33,140	:	34,091	33,213	-2.6%
BE	35,963	36,338	36,993	36,471	36,534	38,008	37,716	:	36,441	37,419	2.7%
BG	15,572	14,753	13,984	13,439	13,000	12,798	12,871	:	14,437	12,890	-10.7%
CY	3,868	3,824	3,943	3,893	3,692	3,383	3,383	:	3,882	3,486	-10.2%
CZ	25,181	23,117	21,851	20,402	19,366	19,610	18,775	:	22,638	19,250	-15.0%
DE	237,622	235,943	232,481	231,080	234,341	237,142	:	:	234,282	235,742	0.6%
DK	62,939	62,379	64,482	63,694	62,849	62,439	62,863	:	63,374	62,717	-1.0%
EE	4,783	4,781	4,847	4,921	5,014	5,098	5,091	:	4,833	5,068	4.9%
EL	39,205	40,087	40,385	40,095	40,115	40,305	40,187	:	39,943	40,202	0.6%
ES	138,644	136,479	137,607	135,569	133,170	131,751	135,307	:	137,075	133,409	-2.7%
FI	17,738	17,390	18,238	18,100	17,923	18,281	17,691	:	17,867	17,965	0.6%
FR	306,731	304,127	301,006	293,864	291,842	292,828	294,266	:	301,432	292,979	-2.8%
HR	10,469	11,054	10,907	10,615	10,446	9,995	9,975	:	10,761	10,139	-5.8%
HU	24,667	23,737	20,248	22,173	24,177	24,404	24,994	:	22,706	24,525	8.0%
IE	64,552	64,709	63,196	63,123	64,554	65,945	:	:	63,895	65,250	2.1%
IT	166,417	164,508	162,101	162,478	157,919	158,632	156,713	:	163,876	157,755	-3.7%
LT	12,675	12,359	12,271	11,882	11,831	11,630	12,017	:	12,297	11,826	-3.8%
LU	2,162	2,172	2,206	2,162	2,122	2,168	2,199	:	2,176	2,163	-0.6%
LV	5,234	5,137	5,182	5,158	5,369	5,503	5,669	:	5,178	5,514	6.5%
MT	642	628	620	556	551	578	572	:	612	567	-7.3%
NL	60,926	58,597	62,984	57,863	52,352	54,607	57,184	:	60,093	54,714	-8.9%
PL	115,789	110,383	118,909	108,052	98,416	96,100	97,830	:	113,283	97,449	-14.0%
PT	28,378	28,533	28,314	28,174	27,829	26,442	26,930	27,554	28,350	27,189	-4.1%
RO	74,600	72,087	64,228	63,873	64,143	64,458	64,181	:	68,697	64,261	-6.5%
SE	20,492	20,101	19,941	19,613	19,457	19,576	:	:	20,037	19,517	-2.6%
SI	5,621	5,598	5,451	5,247	5,165	5,115	5,267	:	5,479	5,182	-5.4%
SK	9,532	9,635	9,401	8,833	9,146	8,990	9,166	:	9,350	9,101	-2.7%
UK	167,093	160,721	165,276	163,429	162,957	163,366	165,501	:	164,130	163,941	-0.1%
EU-28	1,691,392	1,663,629	1,661,438	1,628,388	1,607,639	1,612,292	:	:	1,661,212	1,609,966	-3.1%

**Table 22.** Animal manure phosphate use (1,000 kg P) in the period 2008-2015, and the change between the periods 2008-2011 and 2012-2015 (Source: Eurostat, June 2017).



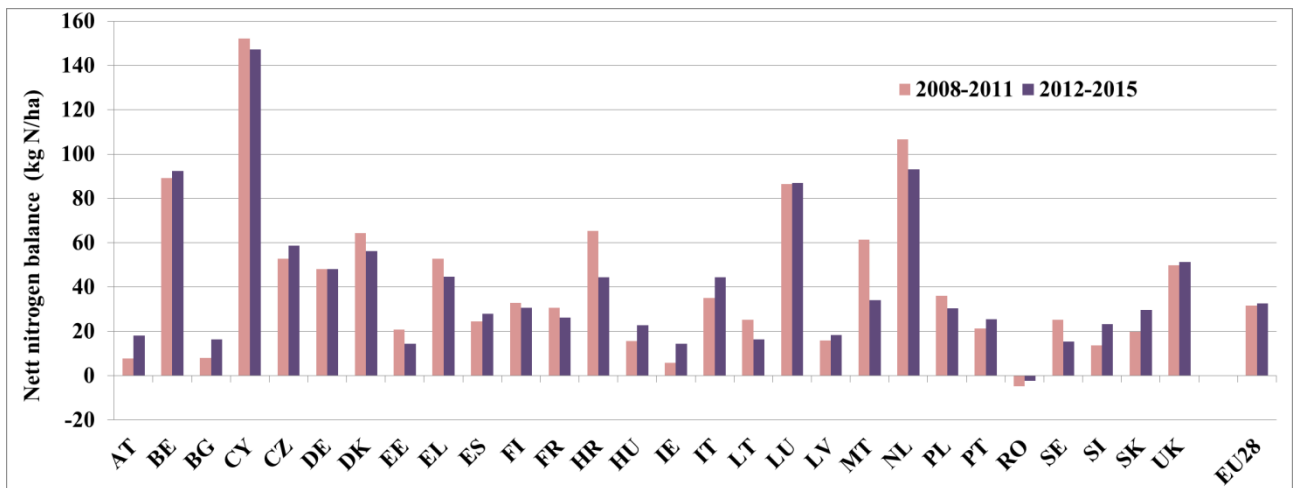
**Figure 44** Animal manure phosphate use (1,000 kg P) in the period 2008-2015 (Source: Eurostat, June 2017).



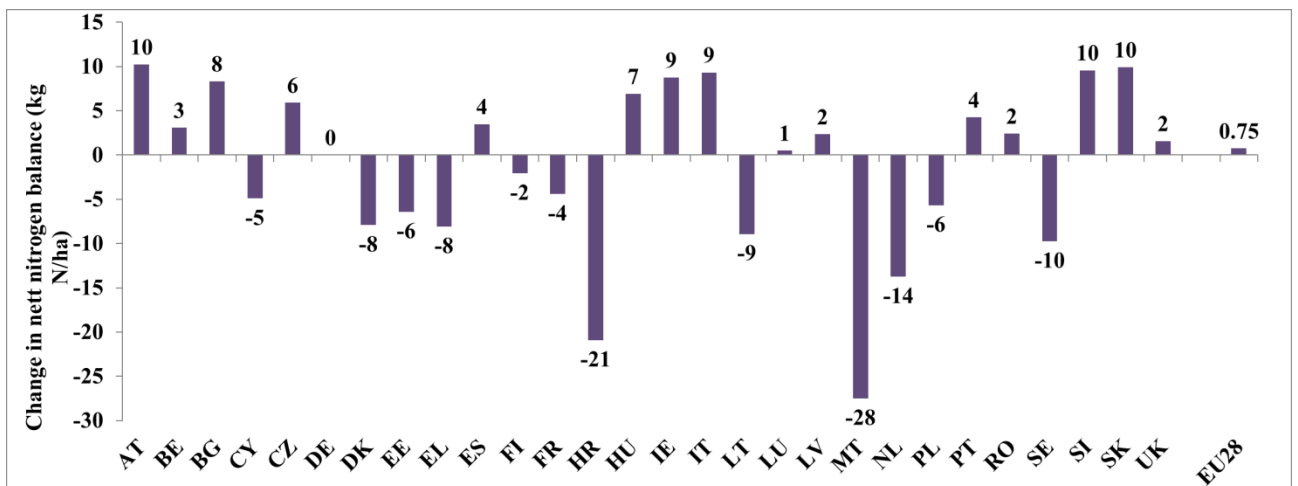
**Figure 45** Change in animal manure phosphate use (%) between the reporting periods 2008-2011 and 2012-2015 (Source: Eurostat, June 2017).

	2008	2009	2010	2011	2012	2013	2014	2015	2008-2011	2012-2015	Change
AT	0	6	17	8	18	21	15		8	18	10
BE	79	84	96	98	98	93	86		89	92	3
BG	7	13	7	5	17	10	22		8	16	8
CY	162	139	149	159	146	140	156		152	147	-5
CZ	62	38	49	62	71	59	46		53	59	6
DE	51	33	47	61	48	48			48	48	0
DK	77	58	62	60	56	60	53		64	56	-8
EE	25	15	21	22	18	13	12		21	14	-6
EL	57	53	59	42	40	46	48		53	45	-8
ES	20	25	31	22	26	23	35		25	28	4
FI	34	22	41	34	31	30	31		33	31	-2
FR	38	24	25	36	23	28	28		31	26	-4
HR	92	39	59	71	66	31	36		65	44	-21
HU	8	15	23	17	30	24	14		16	23	7
IE	5	6	11	1	7	22			6	15	9
IT	38	34	33	35	51	43	39		35	44	9
LT	21	22	31	27	17	19	13		25	16	-9
LU	82	80	86	98	86	87	88		87	87	1
LV	9	14	21	20	16	20	19		16	18	2
MT	91	76	56	23	28	37	37		62	34	-28
NL	110	101	109	107	104	92	83		107	93	-14
PL	41	32	35	36	31	37	23		36	30	-6
PT	17	20	25	23	27	22	26	27	21	26	4
RO	3	8	-10	-20	7	-5	-9		-5	-2	2
SE	35	15	26	25	14	17			25	16	-10
SI	11	18	11	15	24	36	10		14	23	10
SK	13	18	30	18	26	33	30		20	30	10
UK	47	49	53	50	52	52	50		50	51	2
EU-28	34	29	32	32	33	32			31.8	32.5	0.75

**Table 23.** Net nitrogen balance (kg N per ha) in the period 2008-2015, and the change between the periods 2008-2011 and 2012-2015 (Source: Eurostat, June 2017).



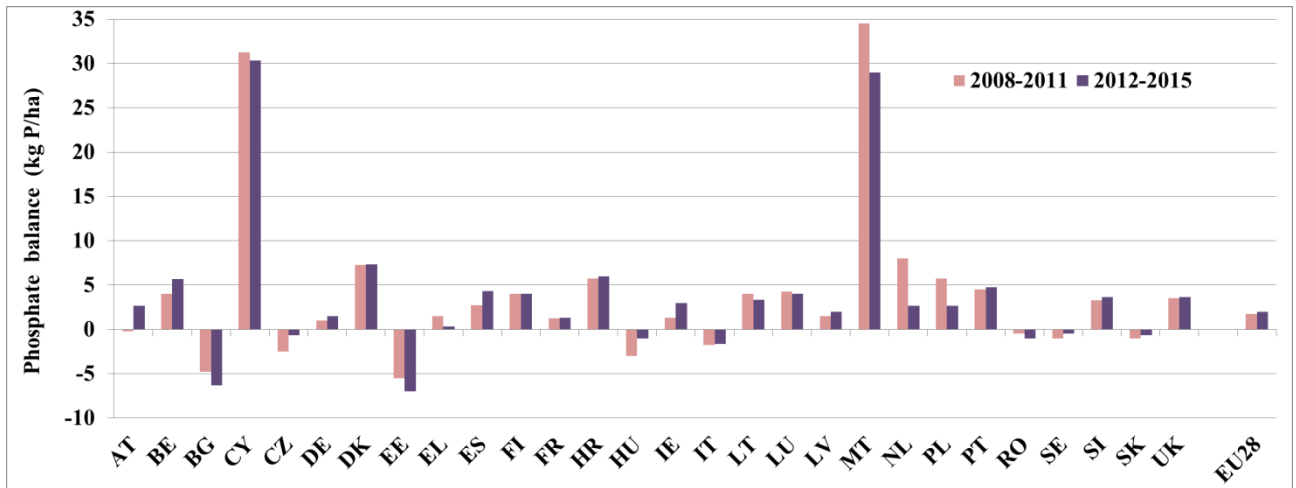
**Figure 46** Average net nitrogen balance (kg N/ha) in the reporting periods 2008-2011 and 2012-2015 (Source: Eurostat, June 2017).



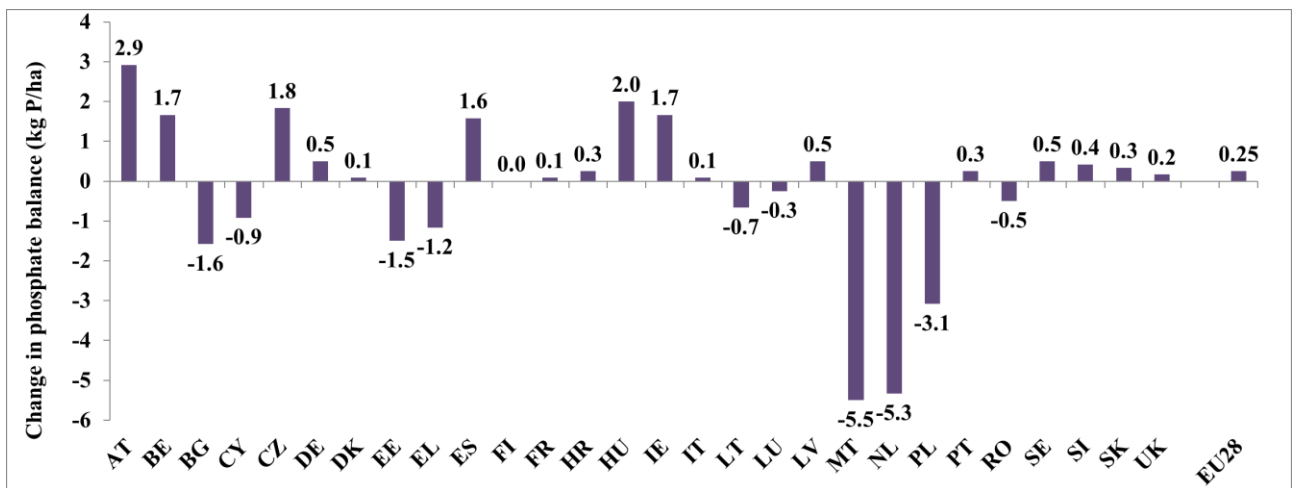
**Figure 47** Change in the net nitrogen balance (kg N/ha) between the reporting periods 2008-2011 and 2012-2015 (Source: Eurostat, June 2017).

	2008	2009	2010	2011	2012	2013	2014	2015	2008-2011	2012-2015	Change
AT	-2	0	1	0	2	4	2		-0.3	2.7	2.9
BE	4	2	5	5	6	6	5		4.0	5.7	1.7
BG	-4	-4	-5	-6	-4	-9	-6		-4.8	-6.3	-1.6
CY	33	29	31	32	30	29	32		31.3	30.3	-0.9
CZ	0	-5	-2	-3	-1	0	-1		-2.5	-0.7	1.8
DE	2	-2	1	3	1	2			1.0	1.5	0.5
DK	7	7	8	7	7	8	7		7.3	7.3	0.1
EE	-5	-6	-6	-5	-6	-8	-7		-5.5	-7.0	-1.5
EL	2	3	2	-1	-1	2	0		1.5	0.3	-1.2
ES	1	3	4	3	5	3	5		2.8	4.3	1.6
FI	5	2	5	4	4	4	4		4.0	4.0	-
FR	4	-2	1	2	1	2	1		1.3	1.3	0.1
HR	9	1	7	6	7	3	8		5.8	6.0	0.3
HU	-4	-3	-2	-3	0	-1	-2		-3.0	-1.0	2
IE	1		2	1	2	4			1.3	3.0	1.7
IT	-3	0	-1	-3	-2	-2	-1		-1.8	-1.7	0.1
LT	6	-1	6	5	7	2	1		4.0	3.3	-0.7
LU	4	4	4	5	4	4	4		4.3	4.0	-0.3
LV	1	1	2	2	1	3	2		1.5	2.0	0.5
MT	43	36	33	26	27	30	30		34.5	29.0	-5.5
NL	8	5	12	7	3	4	1		8.0	2.7	-5.3
PL	8	4	5	6	3	4	1		5.8	2.7	-3.1
PT	4	4	6	4	5	4	5	5.0	4.5	4.8	0.3
RO	1	1	-1	-3	1	-2	-2		-0.5	-1.0	-0.5
SE	1	-3	-1	-1	0	-1			-1.0	-0.5	0.5
SI	5	2	3	3	4	6	1		3.3	3.7	0.4
SK	-1	-1	0	-2	0	0	-2		-1.0	-0.7	0.3
UK	4	2	4	4	4	4	3		3.5	3.7	0.2
EU-28	2	1	2	2	2	2			1.8	2.0	0.2

**Table 24.** Phosphate balance (kg P per ha) in the period 2008-2015, and the change between the periods 2008-2011 and 2012-2015 (Source: Eurostat, June 2017).



**Figure 48** Average phosphate balance (kg P/ha) in the reporting periods 2008-2011 and 2012-2015 (Source: Eurostat, June 2017).



**Figure 49** Change in the phosphate balance (kg P/ha) between the reporting periods 2008-2011 and 2012-2015 (Source: Eurostat, June 2017).